

Southwestern Vermont Health Care Community Health Needs Assessment Report 2015

Southwestern Vermont Health Care
100 Hospital Drive
Bennington, VT 05201

James R. Trimarchi, Director, Strategic Planning
p. 802.440.4051/ f. 802.447.5645
james.trimarchi@svhealthcare.org

Salem Carriker, Community Health and Nutrition Project Coordinator (AmeriCorps VISTA)
p. 802.447.5190
salem.carriker@svhealthcare.org

Approved by Board June 25, 2015
Report Finalized July 15, 2015

Table of Contents

	Page
Executive Summary	3
Background	4
Methodology	5
Results	8
Priority Health Needs	11
Causes of Poor Health	11
Implementation Plan	12
Report Dissemination	14
Appendix A- Service Area	15
Appendix B- Cataloguing Health Facilities	16
Appendix C- Health Indicators for Service Area	33
Appendix D- Focus Group Results- Participant Roster	39
Appendix E- Focus Group Results- Minutes and Findings	41
Appendix F- SVHC Internal Review of Findings- Nurse Practice Council	49
Appendix G- SVHC Internal Review of Findings- Practice Management Team	49
Appendix H- Community Health Needs in Specific Service Areas	51
Appendix I- Cancer Center Accreditation Focus Group Results	55

Executive Summary

Southwestern Vermont Health Care (SVHC) consisting of Southwestern Vermont Medical Center (SVMC) and Centers for Living and Rehabilitation (CLR) conducted a Community Health Needs Assessment (CHNA) to:

- Determine the most pressing healthcare needs of the communities we serve
- Develop a comprehensive, multi-year implementation plan to address the identified concerns

This process involved quantitative data gathering and analysis, and qualitative input from community leaders who represent the broad interests of the communities SVHC serves throughout the region¹. The community leaders included members from the Department of Health, schools, and community groups that had knowledge of the medically underserved, low income and minority populations in our region.



SVHC's service area was defined as counties housing communities from which originated >1% of SVHC's total inpatient and outpatient volume, including;

- Bennington County, Vermont
- Windham County, Vermont
- Rensselaer County, New York
- Washington County, New York
- Northern Berkshire County, Massachusetts

After cataloguing prevalent health needs and reviewing quantitative and qualitative data, focus groups used a structured voting method to prioritize the final list of the most pressing community health needs.

The priority health needs identified for the SVHC service region are:

- **Access to Care**
 - Improve primary care access and dental care availability
 - Increase dental care availability
 - Increase awareness of senior care and end-of-life care options (at-home, hospice, and palliative care)
- **Obesity and Healthy Behaviors**
 - Enhance health and wellness programs
 - Foster links between good health, nutrition, exercise and community development
- **Mental and Behavioral Health and Addiction**
 - Expand substance abuse prevention and treatment options
 - Develop youth stress management and coping program

¹ A similar assessment was conducted by SVHC's Cancer Center and is detailed in Appendix I

The priority health needs identified in 2015 were similar to those identified in SVHC's 2012 CHNA, suggesting the need for a focused implementation plan based on best-practice. Evidence indicates that addressing broad health needs requires both:

- specific programs targeting the needs
- public policy changes that affect the physical and social landscape of communities²

The implementation plan developed to address the identified health needs leverages current understanding of the social determinants of health and considers both national healthcare reform and state initiatives refocusing healthcare delivery on population health.

Recommendations

The recommendation is to continue the comprehensive, multi-year implementation plan to address the identified health needs, including:

- Enhance programs directed at the specific health needs identified
- Increase collaboration with other healthcare providers and community organizations
- Foster public policy, education and advocacy that can impact the social determinants of health
- Continue delivery of quality care throughout the region

To achieve these recommendations, SVHC is supporting specific action items that are described in the Implementation Plan section below.

Background

The federal Patient Protection and Portability Act (PPACA section 9007 and updates to the IRS code 501(r)(1)(A)) mandates that all non-profit hospitals conduct a community needs assessment to identify the greatest health needs of the communities they serve. This assessment must utilize both data analysis and community member input. An implementation plan to address the identified health needs is also required. Lastly, the identified health needs and implementation plan must be disseminated and made available to the public.

In August of 2014, SVHC began conducting the community needs assessment with efforts concluding May of 2015. Geographically, this assessment reflected the largest markets of SVHC's service area: Bennington County, VT, Windham County, VT, the greater Hoosick area and the greater Cambridge area, NY (Rensselaer and Washington Counties), and Northern Berkshire County, MA. Results were developed using both quantitative data and qualitative methods including focus groups throughout the region.

The proposed implementation plan includes both programmatic initiatives, such as supporting the Bennington Free Clinic and wellness programs, as well as policy and community building initiatives, such as supporting regional economic development and funding AmeriCorps VISTA Fellows to organize community building events.

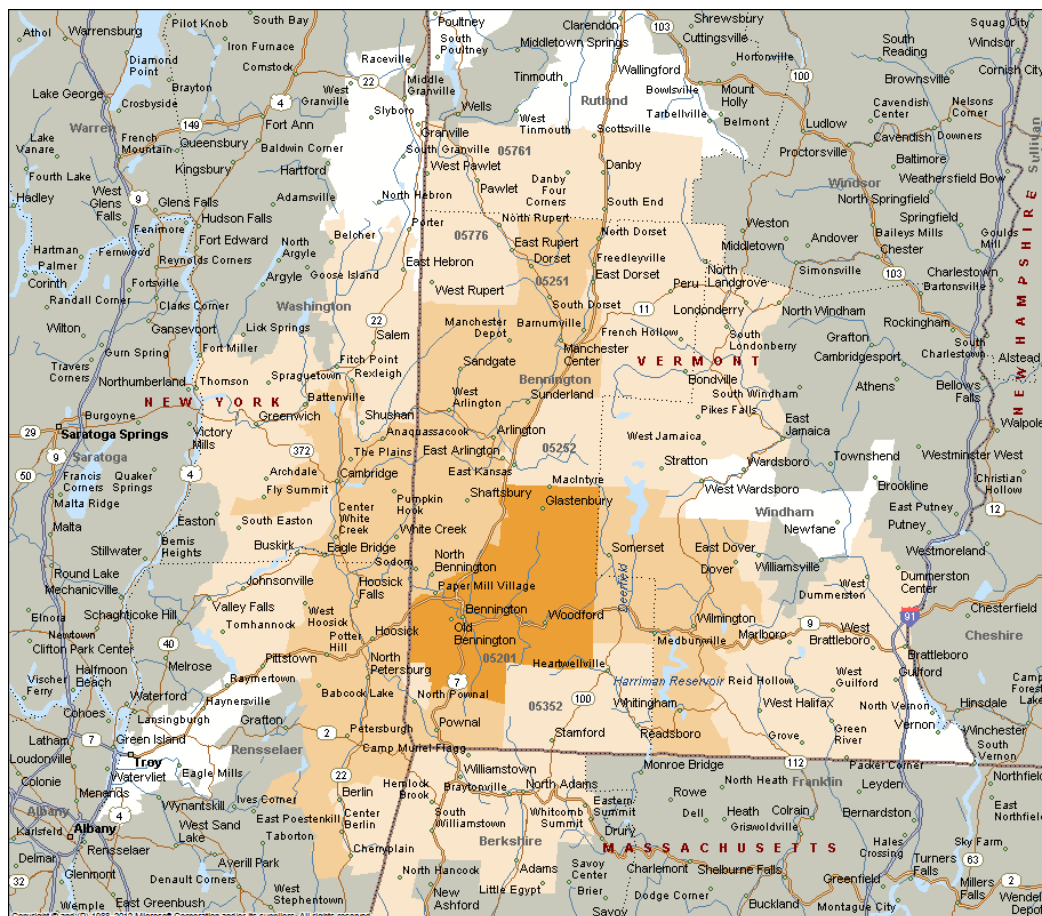
² World Health Organization:
http://www.who.int/social_determinants/thecommission/finalreport/key_concepts/en/index.html (accessed 05/2015)

The process used, the health needs identified, and the implementation plan were reviewed and approved by senior management and the board of trustees (June 2015). The implementation plan aligns with SVHC's strategic goals to transform care, partner (particularly with Dartmouth-Hitchcock) and create sustainability. The initial task-oriented projects in the implementation plan have been built into the fiscal year 2016 budget.

Methodology

Defining SVHC's Service Area:

SVHC serves the tri-state area of southwestern Vermont, eastern New York and northwestern Massachusetts. Zip code analysis of the volume of services rendered to patients reaffirmed previous service area distinctions. Below is a heat map indicating where patients originate. For the CHNA, the zip codes that contributed greater than 1% to SVHC's total FY2011 service volume defined SVHC's service area. See table in Appendix A.



SVHC's defined service area includes:

- Bennington County, Vermont
- Deerfield Valley of Windham County, Vermont
- Hoosick and Cambridge areas of New York
- Northern Berkshire County, Massachusetts

Cataloguing Healthcare Facilities and Resources within the Community:

The healthcare facilities and resources within SVHC's service area were classified into the following categories;

- Hospital/medical center
- Primary care physician practice
- Specialty care practice
- Dentistry, orthodontics and oral care
- Behavioral health services
- Visiting nurses and hospice care
- Long term care and subacute care
- Physical therapy and rehabilitation

The catalog includes healthcare facilities in the following regions;

- Bennington County, Vermont
- Windham County, Vermont
- Southern Rutland County, Vermont.
- Rensselaer County, New York
- Washington County, New York
- Eastern Albany County, New York
- Eastern Schenectady County, New York
- Southeastern Warren County, New York
- Eastern Saratoga County, New York
- Northern Berkshire County, Massachusetts

Healthcare facilities outside of SVHC's service area and in adjacent counties were catalogued because these facilities likely serve as a resource for residents within SVHC's service area. See Appendix B.

Quantitative Data Resources:

A master list of health indicators was developed using a variety of resources, including:

- Behavioral Risk Factor Surveillance System (BRFSS)
- Youth Risk Behavior Survey (YRBS)
- County Health Rankings
- Community Commons
- US Census Data
- Various Health Department reports from each state

This list was amended to focus on indicators in the following categories:

- Population Demographics
- Access to Health Services
- Health Behaviors
- Maternal and Child Health
- Health Status

Comparative data sets were developed to illustrate disparities between county averages and state averages. Specific data for the smaller communities in New York and Massachusetts was not available in some cases as the New York and Massachusetts Departments of Health only publish data on a regional level.

The quantitative data and county comparisons were shared with members of the focus groups to deepen their understanding of the health needs of the communities SVHC serves.

Qualitative Data Resources:

Seven separate, in-depth focus groups were conducted involving 89 community members and leaders from multiple sectors in Vermont, New York, and Massachusetts communities. These focus groups consisted of members who represent the broad interests of the community served by SVHC. Members included state and local public health departments, a wide variety of community leaders, and representatives of the medically underserved, low-income and minority populations. We ensured that the focus group discussions did not exclude any populations with health disparities or groups at risk of not receiving adequate medical care as a result of being uninsured or underinsured or due to geographic, language, financial or other barriers.

The focus groups identified the health needs in the following community segments:

- Pre-K and Parents
- Kids and Youth (ages 6-12)
- Teens and Young Adult (ages 13-20)
- Adults (ages 21-34)
- Mature Adults (ages 35-64)
- Seniors (age >65)

To reduce the list of identified health needs, similar health needs in each segment were grouped and similar health needs in separate age segments were combined. Focus groups reviewed quantitative data to further deepen their perspective of the health needs of the community.

After cataloguing prevalent health needs and reviewing quantitative and qualitative data, focus groups used a structured voting method to prioritize the final list of the most pressing community health needs. Focus groups also developed initial recommendations for the implementation plan to address the most pressing health needs identified.

A focus group participant roster and meeting notes appears in Appendices D and E, respectfully.

Determining the Priority Health Needs:

The final list of priority health needs across SVHC's service area was determined by a team at SVHC that reviewed the quantitative data and county comparisons, the existing internal and external reports, and the priority health needs identified by community members in the focus groups. This information was then reviewed by the SVHC Nurse Practice Council and SVHC's Practice Management Team, who made additional recommendations (Appendix F and G, respectfully). All three information sources identified similar pressing health needs, and thereby no further analysis or prioritization matrix was required. The most pressing health needs of SVHC's communities were similar to those identified in the SVHC CHNA conducted in 2012.

Results

SVHC's Service Area:

SVHC serves the tri-state area of southwestern Vermont, eastern New York and northwestern Massachusetts. Zip code analysis of the volume of services rendered to patients reaffirmed previous service area distinctions. SVHC's defined service area includes:

- North and south Shires of Bennington County, Vermont
- Deerfield Valley of Windham County, Vermont
- Hoosick and Cambridge areas of New York
- Northern Berkshire County, Massachusetts

See heat map in Methods and table in Appendix A for further details.

Cataloguing Healthcare Facilities and Resources within the Community:

Many healthcare facilities and resources were identified throughout SVHC's service area and the adjacent communities. A complete list of these organizations and their affiliation with SVHC is presented in Appendix B.

Health Needs of the Communities SVHC Serves:

The table below illustrates a subset of the quantitative opportunities to improve the health of communities within the SVHC service area. An expanded table with additional data can be found in Appendix C.

	Vermont	Bennington County (VT)	Windham County (VT)	New York	Rensselaer County (NY)	Washington County (NY)	Massachusetts	Berkshire County (MA)	Nation
Access to Health Services									
% of adults with Usual Primary Care Provider	88%	90%	88%	83%	90%	76%	88%	89%	78%
Number of Primary Care Physicians/ 100,000 people	122.6	110.9	126.51	109.58	63.99	36.41	124.19	137.21	85.83
% of adults who are Uninsured	9.44%	10.40%	10%	16%	11.10%	13.70%	5.57%	5.30%	20.76%
% of children who are Uninsured	3.24%	3.70%	3.40%	4.18%	3.60%	4.50%	1.35%	2%	7.54%
% of adults with 6 or more permanent teeth removed	15.85%	17.87%	17.23%	15.73%	18.23%	28.34%	14.01%	18.73%	15.65%
Health Behaviors									
Substance Use									
% of adults who smoke	17.00%	27.00%	15.00%	17.00%	18.60%	23.50%	15.00%	17.20%	19.00%
% of students who smoked cigarettes in the past 30 days	13.00%	10.00%	17.00%	10.60%	Not Available	Not Available	21.00%	12.30%	15.70%
% of students who had five or more drinks of alcohol within a couple of hours in the past 30 days (Binge Drinking Rate)	19.00%	17.00%	23.00%	18.40%	Not Available	Not Available	19.00%	18.00%	20.80%
Weight, Physical Activity									
% of adults that are overweight or obese	60.00%	60.00%	53.00%	59.30%	60.50%	67.80%	59.78%	58.15%	64.00%
% of youth that are overweight or obese	29.00%	31.00%	31.00%	24.37%	32.10%	32.20%	23.06%	Not Available	30.30%
% of students that met physical activity guidelines	25.00%	32.00%	26.00%	25.73%	Not Available	Not Available	22.99%	Not Available	27.10%

	Vermont	Bennington County (VT)	Windham County (VT)	New York	Rensselaer County (NY)	Washington County (NY)	Massachusetts	Berkshire County (MA)	Nation
% of adults with 5+ fruit and vegetable servings per day	23.00%	26.00%	28.00%	26.80%	30.90%	Not Available	27.50%	27.40%	23.50%
Preventative Measures									
% of adults with a routine doctor visit in past year	67.00%	70.00%	66.00%	74.80%	Not Available	Not Available	76.70%	76.10%	68.20%
% of adults that have visited the dentist in past year	74.84%	72.22%	73.44%	72.82%	69.36%	70.17%	79.71%	76.9%*	69.85%
Maternal and Child Health									
Rate of births that occurred in women aged 15-19/1,000 births	18.5	26.6	22.9	23.7	25.7	31.1	18.3	21.8	36.6
% of women who smoked before pregnancy	21.10%	35.60%	29.80%	Not Available	Not Available	Not Available	Not Available	Not Available	Not Available
Health Status									
Chronic Diseases									
% of adults with heart disease	4.20%	4.62%	5.14%	4.30%	11.99%	5.00%	3.86%	3.97%	4.40%
% of adults with asthma	15.44%	21.33%	15.14%	14.32%	9.11%	16.51%	15.42%	16.70%	13.36%
% of adults with diabetes	6.42%	6.50%	6.00%	8.66%	9.10%	8.80%	8.17%	7.00%	8.95%
Mental Health									
% of adults that have ever been told they have a depressive disorder	22.00%	27.00%	22.00%	16.10%	Not Available	Not Available	19.70%	Not Available	17.00%
% of students felt sad/hopeless almost every day for 2+ weeks in a row	21.00%	22.00%	27.00%	23.76%	Not Available	Not Available	22.00%	Not Available	29.90%

Priority Health Needs:

The following priority health needs were determined by combining quantitative data, comments from focus groups, and existing health reports.

The priority health needs across SVHC's service area are:

- **Access to Care**
- **Healthy Behaviors**
- **Mental and Behavioral Health and Addiction**

Focus groups members identified transportation as a major barrier to access to care and economic development in the region. All focus groups also recognized the need for positive role models and/or a mentorship program for children and youth.

Hoosick Falls and Cambridge community members emphasized the need for child stress management programs because of a high number of children and youth with crisis mental health issues. Additionally, both New York communities stressed a need for primary care and at-home care access in their respective communities. A similar need was highlighted in Wilmington, VT, specifically because of a lack of access to weekend care and pediatric care.

A need for affordable early childhood care and afterschool programming for children and youth was identified across the service region, especially in Manchester, Wilmington, Cambridge, and Williamstown. Bennington representatives also indicated a need for improved reproductive health education and increased access to birth control due to the high rate of teen pregnancy in Bennington County.

The priority health needs specific to each service area appear in Appendix H.

The priority health needs identified were similar to those identified during SVHC's 2012 CHNA.

The Causes of Poor Health

A large body of research indicates that the most effective means of improving community health is to address underlying social and economic determinants, or root causes of health issues. This approach is corroborated by the World Health Organization's position, "the social determinants of health are the circumstances in which people are born, grow up, live, work, and age, as well as the systems put in place to deal with illness. These circumstances are in turn shaped by a wider set of forces: economics, social policies, and politics."

The socio-economic determinants of population health include:

- **Income** – Income is closely linked with differences in health. Research shows that those who have greater economic opportunity typically have better health.
- **Education** – Educational levels are strongly linked with differences in health. People with some college or post-high-school education have a longer life expectancy, less chronic disease (diabetes and heart disease) and greater general health than those with less education.
- **Physical Environment** – The physical environment we live in plays a large role in determining health outcomes. Our ability to walk safely, access recreational opportunities, conveniently find nutritional food options, access affordable quality homes, limit contaminants in our homes, and a host of other environmental factors directly impact our health and the overall health of a community.

- Public Policy – Legislation to provide access to health care providers, minimum wage requirements, state Medicaid and Medicare programs and funding for key health related programs have measurable effects on public health.
- Social Policy – Local laws, ordinances and policies like nutritional standards for school menus, smoking bans in the workplace, tax-based support for afterschool programs, access to quality child care and municipal funding for sidewalks and parks are just a few of the many local activities which can have effect on the overall health of a community.

Weaving community policy initiatives together with programmatic activities is the key to improving the health needs identified by SVHC's assessment and are central to the implementation plan.

SVHC Implementation Plan to Address Health Needs

The comprehensive, multi-year implementation plan addresses both programmatic and policy barriers. The plan spans the health system and leverages its community collaborators. The activities in the plan fall into several themes:

Access to Care

- Free and Subsidized Care – Continue to provide free and reduced health care services for those who do not have insurance or are underinsured. These efforts are bolstered by activities to help individuals enroll in federal and state programs that can help pay for the care they need.
- Primary Care Access Initiatives – Continue recruitment of primary care providers and expansion of primary care offerings across the region, including building new access points and facilities, renovating existing facilities, extending hours of operations and streamlining processes to increase the capacity to see more patients.
- Bennington Free Clinic Support – Collaborate with the part-time, walk-in free clinic by providing supplies, volunteer staff, and financial support. Patients eligible for care at the Bennington Free Clinic also qualify for free or subsidized care at SVHC.
- Dental Clinic Development – Consider launch of SVMC Dental Clinic with 5 dental chairs and recruit 2 new dentists and hygienists. SVMC Dental Clinic will require Green Mountain Care Board approval through the Certificate of Need process.
- Senior Care, At-Home Care, and End-of-Life Initiatives – Work with at-home care organizations to educate residents and patients about at-home and end-of-life care available in community. Continue to support and expand SVMC's hospice and palliative care program. Ensure providers around region are aware of senior care, at-home care and end-of-life care options.

Obesity and Healthy Behaviors

- Community Building and Economic Development
 - AmeriCorps VISTA – Continue grant to Bennington County Regional Commission (BCRC) to manage three AmeriCorps VISTA fellows focused on transforming the community. The VISTA fellows will implement programs that support community development, improve health, and alleviate poverty in the region.
 - Economic Partners – Support initiatives that improve the economic climate of SVHC's service region through active participation in economic development task forces, partnerships with local businesses, and supporting the Idea Fund (Bennington-based micro-grant program).

- Educational Systems – continue to collaborate with local schools and colleges to set a new vision that transforms educational attainment and college/career readiness. Launch school based programs that inspire and provide youth with stress management and coping skills, healthy eating and cooking knowledge, and encourages routine exercise
 - Healthy Home Ownership Program – Launch and fund a not-for-profit focused on rehabilitating downtown single family homes and facilitating home ownership by SVHC employees.
- Health and Wellness Programs – Expand current health and wellness programs offered by SVHC, while also implementing new programs across service region that address priority needs.
 - Current health and wellness initiatives include:
 - Tobacco cessation program
 - Yoga class for cancer patients
 - New health and wellness initiatives include:
 - Health Care Share (healthy food access and nutrition education for patients)
 - Youth stress management and mentoring program
 - School based nutrition and cooking classes
 - Elementary school based oral health skills building
 - Reproductive health education in schools
 - Walking and physical activity initiatives across neighborhoods
- Walking Trail – Install a three-quarter of a mile walking trail on the SVMC Bennington Campus that will be open to employees and the public. The walking trail will connect to a nearby neighborhood park.
- Transportation Collaborative – Coordinate with Green Mountain Community Network and area organizations to develop improved transportation route with extended stop options that benefit the entire service region.
- Community Events Sponsorship – Financially support and participate in community events such as wellness fairs, cancer screening events and community building events such as the American Cancer Society Relay for Life and Vermont Race for the Cure.

Mental and Behavioral Health and Addiction

- Substance Abuse Treatment Collaboration – Work with local providers, designated mental health agency, and criminal justice system to improve access to opiate addiction treatment and recovery services. The goals are to improve the health of residents afflicted with substance abuse and to reduce the cost impact of opiate addiction on health care spending.
- Catalyst- neighborhood based program to reduce crime, substance abuse, and school truancy
- Youth mentoring program

Each of the initiatives is multidimensional and supports multiple priority health needs. For example, the support for the Bennington Free Clinic increases access to quality primary care. However, because a disproportionate percentage of the patients serve also struggle with behavioral health issues and substance abuse, the efforts of the Bennington Free Clinic care givers also addresses those priority health needs. Similarly, the SVMC walking trail encourages exercise to reduce obesity, it also improves mental resilience through stress management and building social relationships.

The chart below illustrates how these initiatives knit a coordinated and comprehensive response to the priority health needs.

	Access to Care			Obesity and Healthy Behaviors		Mental Health & Addiction	
	Primary Care	Dental Care	Senior Care	Health & Wellness	Community Development	Substance Abuse	Youth Stress Management
Free and Subsidized Care	x	x	x	x	x	x	x
Primary Care Access Initiatives	x		x	x	x	x	
Bennington Free Clinic Support	x		x	x		x	x
Dental Clinical Development		x	x	x	x		
Senior Care Initiatives	x	x	x	x		x	
Community Building and Economic Development				x	x	x	x
AmeriCorps VISTA Fellows				x	x		x
Economic Partners Participation				x	x		
Educational Systems Improvement				x	x	x	x
Healthy Home Ownership Program				x	x	x	x
Health and Wellness Programs				x	x	x	x
Tobacco Cessation Program				x		x	
Yoga Classes				x			x
Health Care Share (healthy food access for patients)				x	x		
Youth Stress Management/Mentoring Program				x	x	x	x
Healthy Nutrition and Cooking Classes				x	x		
Oral Health Skills Building		x		x			
Reproductive Health Education				x			x
Walking and Physical Activity Initiatives				x	x	x	x
SVMC Walking Trail				x	x	x	x
Transportation Collaborative	x	x	x	x	x		
Community Event Sponsorship				x	x	x	x
Substance Abuse Treatment Collaboration				x		x	x
Catalyst					x	x	x
Youth Mentoring Program				x		x	x

SVHC cannot address these priority health needs and improve community health alone. Continuing to foster collaboration with local organizations and engagement with municipalities and community leaders is key to achieving success. The health of the communities served by SVHC will improve as we deploy the multi-year implementation plan that includes both programmatic and policy initiatives.

Report Dissemination

Upon completion this report will be disseminated to:

- Individuals that participated in the focus groups
- Bennington Economic Development Task Force
- Vermont Department of Health
- Green Mountain Care Board

The report will also be made available to the public as a PDF file from the institutional web page (<http://svhealthcare.org>). Members of the public can also request a print copy of this report by contacting James Trimarchi via e-mail (james.trimarchi@svhealthcare.org) or phone (802.440.4051).

Appendix A. Defining SVHC's service area

Analysis of volume of services rendered to patients by zip code. Zip codes that garnered greater than 1% of the Total SVHC fiscal year 2011 volume were included in SVHC's service area for the CHNA and are highlighted in yellow.

Defining Communities in SVHC Service Area					
Zip Code	SVHC Service Area	County	Population (2010 Census)	SVHC FY2012 Volume	% of Total SVHC FY2012 Volume
05201	Bennington	Bennington County	14851	80833	37.10%
05255	Northshire	Bennington County	4121	15286	7.02%
12090	NY Primary	Rensselaer County	6262	12719	5.84%
05250	Northshire	Bennington County	3408	12416	5.70%
05257	Bennington	Bennington County	2718	9963	4.57%
05262	Bennington	Bennington County	2547	9923	4.56%
05261	Bennington	Bennington County	2738	8796	4.04%
05363	Deerfield	Windham County	2021	8036	3.69%
U	Unknown	Unknown		7302	3.35%
05251	Northshire	Bennington County	1350	4442	2.04%
12816	NY Secondary	Washington County NY	4610	4116	1.89%
12138	NY Primary	Rensselaer County	3168	3551	1.63%
05254	Northshire	Bennington County	273	3347	1.54%
05356	Deerfield	Windham County	717	3115	1.43%
12057	NY Primary	Rensselaer County & Washington County NY	1835	2842	1.30%
05361	Deerfield	Windham County	947	2655	1.22%
05253	Northshire	Bennington County	685	2073	0.95%
05350	Fringe South	Bennington County	763	1870	0.86%
01267	Fringe South	Berkshire County	7989	1866	0.86%
05342		Windham County	581	1840	0.84%
01247	Fringe South	Berkshire County	16087	1541	0.71%
05252	Northshire	Bennington County	274	1427	0.65%
05260	Bennington	Bennington County	459	1330	0.61%
05340	Fringe North	Bennington County	763	1290	0.59%
12028	NY Primary	Washington County NY	1172	1199	0.55%
12022	NY Primary	Rensselaer County	929	1134	0.52%
12865	NY Secondary	Washington County NY	3663	878	0.40%
05739	Fringe North	Rutland County	1407	790	0.36%
05761	Fringe North	Rutland County	1000	742	0.34%
12089		Rensselaer County	69	731	0.34%
05301		Windham County	16820	697	0.32%
05776	Fringe North	Bennington County	714	697	0.32%
05155	Fringe North	Windham County	828	672	0.31%
12073	NY Secondary	Washington County NY	736	660	0.30%
05352	Fringe South	Bennington County	824	649	0.30%
12834	NY Secondary	Washington County NY	6594	598	0.27%
05358	Deerfield	Windham County	148	556	0.26%
05152	Fringe North	Bennington County	448	511	0.23%
05148	Fringe North	Windham County	1140	494	0.23%
12094		Rensselaer County	2268	474	0.22%
05341	Deerfield	Windham County	407	358	0.16%
05775	Fringe North	Rutland County	623	339	0.16%
05360	Fringe North	Windham County	251	328	0.15%
05701		Rutland County	20802	287	0.13%
01220		Berkshire County	8603	270	0.12%
12185		Rensselaer County	2037	264	0.12%
05343	Fringe North	Windham County	917	242	0.11%
12180		Rensselaer County	53606	205	0.09%
05773		Rutland County	2136	198	0.09%
12832	Fringe North	Washington County NY	7106	162	0.07%
05355	Fringe North	Windham County	813	122	0.06%
05764		Rutland County	3452	67	0.03%
05345		Windham County	2119	47	0.02%
05763		Rutland County	2747	37	0.02%
05733		Rutland County	5895	36	0.02%
05742		Rutland County	597	33	0.02%
05759		Rutland County	1827	24	0.01%
05354		Windham County	2210	11	0.01%
05401		Chittenden County	28185	10	0.00%
12065		Saratoga County	41776	10	0.00%
05732		Rutland County	708	9	0.00%
12144		Rensselaer County	20555	8	0.00%
05443		Addison County	6656	7	0.00%
05602		Washington County	11916	5	0.00%
05758		Rutland County	784	5	0.00%
12827		Washington County NY	3877	4	0.00%
05672		Lamoille County	4314	2	0.00%
05676		Washington County	4984	1	0.00%
05828		Caledonia County	1928	1	0.00%
05487		Addison County	1498	0	0.00%

Appendix B. Cataloguing Health Facilities and Resources within the community

The healthcare facilities and resources within SVHC's service area were classified into the following categories;

- Hospital/medical center
- Primary care physician practice
- Specialty care practice.
- Dentistry, orthodontics and oral care
- Behavioral health services
- Visiting nurses and hospice care
- Long term care and subacute care
- Physical therapy and rehabilitation

The catalog includes healthcare facilities in the following regions;

- Bennington County, Vermont
- Windham County, Vermont
- Southern Rutland County, Vermont.
- Rensselaer County, New York
- Washington County, New York
- Eastern Albany County, New York
- Eastern Schenectady County, New York
- Southeastern Warren County, New York
- Eastern Saratoga County, New York
- Northern Berkshire County, Massachusetts

Healthcare facilities outside of SVHC's service area and in adjacent counties were catalogued because these facilities likely serve as a resource for residents within SVHC's service area.

Care Resources in Region				
State	County	Type	Institution Name	Affiliate of SVHC
Vermont	Bennington	Hospital / Medical Center	Southwestern Vermont Health Care	yes SVHC
Vermont	Bennington	Primary Care Physician Practice	SVMC Northshire Campus (D-HP Physicians)	yes SVHC
Vermont	Bennington		SVHC Primary Care (D-HP Physicians)	yes SVHC
Vermont	Bennington		Mount Anthony Primary Care	no, NOT SVHC
Vermont	Bennington		Bennington Family Practice	no, NOT SVHC
Vermont	Bennington		Stram Center for Integrative Medicine (Bennington, VT)	no, NOT SVHC
Vermont	Bennington		Avery Wood, MD Family Medicine	no, NOT SVHC
Vermont	Bennington		Eric Seyferth, MD	no, NOT SVHC
Vermont	Bennington		Green Mountain Pediatrics	no, NOT SVHC
Vermont	Bennington		Keith Michl, MD	no, NOT SVHC
Vermont	Bennington	Specialty Care Practice	Allergy at SVMC (D-HP Physicians)	yes SVHC
Vermont	Bennington		Cardiology at SVMC (D-HP Physicians)	yes SVHC
Vermont	Bennington		Gastroenterology at SVMC (D-HP Physicians)	yes SVHC
Vermont	Bennington		General Surgery at SVMC (D-HP Physicians)	yes SVHC
Vermont	Bennington		Infectious Disease at SVMC (D-HP Physicians)	yes SVHC
Vermont	Bennington		Inpatient Medicine (Hospitalist) at SVMC (D-HP Physicians)	yes SVHC
Vermont	Bennington		Primary Care at SVMC's Bennington Campus (D-HP Physicians)	yes SVHC
Vermont	Bennington		Obstetrics and Gynecology (OB/GYN) at SVMC (D-HP Physicians)	yes SVHC
Vermont	Bennington		Occupational Medicine at SVMC (D-HP Physicians)	yes SVHC
Vermont	Bennington		Orthopaedics at SVMC (D-HP Physicians)	yes SVHC
Vermont	Bennington		Pathology at SVMC (D-HP Physicians)	yes SVHC
Vermont	Bennington		Pediatrics at SVMC (D-HP Physicians)	yes SVHC
Vermont	Bennington		Oncology: Southwestern Vermont Regional Cancer Center (D-HP Physicians)	yes SVHC
Vermont	Bennington		Rheumatology at SVMC (D-HP Physicians)	yes SVHC
Vermont	Bennington		Urology at SVMC (D-HP Physicians)	yes SVHC
Vermont	Bennington		Stram Center for Integrative Medicine (Bennington, VT)	no, NOT SVHC
Vermont	Bennington		Martha Stitelman, MD	no, NOT SVHC
Vermont	Bennington		The Memory Clinic	no, NOT SVHC
Vermont	Bennington		Brookside Pediatrics	no, NOT SVHC
Vermont	Bennington	Dentistry, Orthodontics, Oral Care	Andrew Schmid, DDS	no, NOT SVHC
Vermont	Bennington		Bennington Dental Center	no, NOT SVHC
Vermont	Bennington		Betsy Carmack, DDS	no, NOT SVHC
Vermont	Bennington		Brent B. Coffield, DDS	no, NOT SVHC
Vermont	Bennington		Catherine Chech, DMD	no, NOT SVHC
Vermont	Bennington		Christopher Bevin DDS	no, NOT SVHC
Vermont	Bennington		Elaine M. McLain, DDS	no, NOT SVHC
Vermont	Bennington		Eric P. Holmgren, DDS	no, NOT SVHC
Vermont	Bennington		Geoffrey H. Campe, DDS (orthodontics)	no, NOT SVHC
Vermont	Bennington		John M. Stewart, DDS	no, NOT SVHC
Vermont	Bennington		Kateryna Latypova, DDS	no, NOT SVHC
Vermont	Bennington		Lance A. Smagalski, DDS	no, NOT SVHC
Vermont	Bennington		Lawrence J. Pietrucha, DDS	no, NOT SVHC
Vermont	Bennington		Loren Peck, DDS	no, NOT SVHC
Vermont	Bennington		Mary Corinne Squire, DDS	no, NOT SVHC
Vermont	Bennington		Michael E. Brady, DDS	no, NOT SVHC
Vermont	Bennington		Michael E. Sleeman, DDS	no, NOT SVHC
Vermont	Bennington		Oral Surgery Associates	no, NOT SVHC
Vermont	Bennington		Pedriodontics & Implants: William E. Guild, DDS	no, NOT SVHC
Vermont	Bennington		Philip H. Ehret, DDS	no, NOT SVHC
Vermont	Bennington		Richard A. Barbierni, DDS	no, NOT SVHC
Vermont	Bennington		Richard Heilemann, DDS	no, NOT SVHC
Vermont	Bennington		Robert Miller, DDS	no, NOT SVHC
Vermont	Bennington		Salem Dentistry	no, NOT SVHC
Vermont	Bennington		Shaftsbury Dental Center Plc	no, NOT SVHC
Vermont	Bennington		Steven Kane, DDS	no, NOT SVHC
Vermont	Bennington		Thomas E. Macksey DDS	no, NOT SVHC
Vermont	Bennington		Wesley Baker, DDS	no, NOT SVHC
Vermont	Bennington	Behavioral Health Services	United Counseling Services	no, NOT SVHC
Vermont	Bennington		Susan M. Sweeney, Psychologist, MA, LADC	no, NOT SVHC
Vermont	Bennington		Nancy A Field, PhD	no, NOT SVHC
Vermont	Bennington		Elizabeth Fredland	no, NOT SVHC
Vermont	Bennington		Neurological Consultants	no, NOT SVHC
Vermont	Bennington		David Mellinger	no, NOT SVHC
Vermont	Bennington		Robert Hemmer Psychologist	no, NOT SVHC
Vermont	Bennington		The Spicer Family Center	no, NOT SVHC
Vermont	Bennington		Patricia A. Mccullagh, PSYD	no, NOT SVHC
Vermont	Bennington		Martha Bowen Licsw	no, NOT SVHC
Vermont	Bennington		Steven Anthony Sola, Ph.D., FACAPP	no, NOT SVHC
Vermont	Bennington		Newfane Wellness	no, NOT SVHC
Vermont	Bennington		Ellen C. Collins-Reed, LICSW	no, NOT SVHC
Vermont	Bennington		David Mellinger	no, NOT SVHC
Vermont	Bennington		Catapano Lisa K MD	no, NOT SVHC
Vermont	Bennington		Louis Propp, PsyD	no, NOT SVHC
Vermont	Bennington		Stephen R. King, PhD	no, NOT SVHC
Vermont	Bennington		Gaia Deering, Psychologist, MA	no, NOT SVHC
Vermont	Bennington		Lisa J. Carton	no, NOT SVHC
Vermont	Bennington		Nancy Banfield, LICSW	no, NOT SVHC
Vermont	Bennington		Meredith Harris Ozier MS, LCMHC	no, NOT SVHC
Vermont	Bennington		Paul Scott, Licensed Psychoanalyst	no, NOT SVHC
Vermont	Bennington		Raymond E. Lovett, LICSW	no, NOT SVHC
Vermont	Bennington		Glenn Cratty, LICSW	no, NOT SVHC
Vermont	Bennington		Lori M. Vadakin, LADC	no, NOT SVHC

State	County	Type	Institution Name	Affiliate of SVHC
Vermont	Bennington	Visiting Nurses & Hospice Care	Visiting Nurse Association & Hospice of Southwestern Vermont Health Care	yes SVHC
Vermont	Bennington		BAYADA Home Health Care	no, NOT SVHC
Vermont	Bennington	Long term Care & Subacute Care	Centers for Living and Rehabilitation of SVHC	yes SVHC
Vermont	Bennington		Bennington Health & Rehab Center	no, NOT SVHC
Vermont	Bennington		Vermont Veterans Home	no, NOT SVHC
Vermont	Bennington		Crescent Manor Care Center	no, NOT SVHC
Vermont	Bennington	Physical Therapy & Rehabilitation	Bennington Physical Therapy	no, NOT SVHC
Vermont	Bennington		Prospect Rehabilitation	no, NOT SVHC
Vermont	Bennington		Progressive Physical Therapy, LLC; Jennifer J. Smith, PT	no, NOT SVHC
Vermont	Bennington		Manchester Health Services	no, NOT SVHC
Vermont	Bennington		Metzger & Mole Physical	no, NOT SVHC
Vermont	Bennington		Gail O'Brien PT PLLC	no, NOT SVHC
Vermont	Bennington		Robin C. Waterman, PT	no, NOT SVHC
Vermont	Bennington		John M. Diblasio, MPT	no, NOT SVHC
Vermont	Bennington		Terriann Whitman, PT	no, NOT SVHC
Vermont	Bennington		Patricia M. Patane, ATC	no, NOT SVHC
Vermont	Bennington		Frances C. O'Neill, PT	no, NOT SVHC
Vermont	Bennington		Casting for Recovery	no, NOT SVHC
Vermont	Bennington		Allison C. Matunas, PT	no, NOT SVHC
Care Resources in Region				
State	County	Type	Institution Name	Affiliate of SVHC
Vermont	Windham	Hospital / Medical Center	Brattleboro Memorial Hospital	no, NOT SVHC
Vermont	Windham	Hospital / Medical Center	Grace Cottage Hospital	no, NOT SVHC
Vermont	Windham	Primary Care Physician Practice	Deerfield Valley Campus (D-HP Physicians)	yes SVHC
Vermont	Windham		Windham Family Practice	no, NOT SVHC
Vermont	Windham		Brattleboro Primary Care	no, NOT SVHC
Vermont	Windham		Rockingham Medical Group (Springfield Medical Care Systems, Inc.)	no, NOT SVHC
Vermont	Windham		Janine Foote, DO	no, NOT SVHC
Vermont	Windham		Laura Metsch, MD - Brattleboro Memorial Hospital	no, NOT SVHC
Vermont	Windham	Specialty Care Practice	Rockingham Medical Group (Springfield Medical Care Systems, Inc.)	no, NOT SVHC
Vermont	Windham		Brett Bloomberg, AC	no, NOT SVHC
Vermont	Windham		Mountain Medical at Mt. Snow (SVMC service) (D-HP Physicians)	yes SVHC
Vermont	Windham		Rockingham Natural Health Clinic	no, NOT SVHC
Vermont	Windham	Dentistry, Orthodontics, Oral Care	1st Advantage Dental	no, NOT SVHC
Vermont	Windham		Estey Dental Center	no, NOT SVHC
Vermont	Windham		Greater Falls Family Cosmetic	no, NOT SVHC
Vermont	Windham		Horizon Dental Associates	no, NOT SVHC
Vermont	Windham		Brattleboro Dental Health	no, NOT SVHC
Vermont	Windham		Rockingham Dental Center	no, NOT SVHC
Vermont	Windham		Connecticut Valley Oral Surgery	no, NOT SVHC
Vermont	Windham		Brattleboro Orthodontics Specialists	no, NOT SVHC
Vermont	Windham		TL Kauffman, DDS	no, NOT SVHC
Vermont	Windham		Jeremy S. Hoffman, DDS	no, NOT SVHC
Vermont	Windham		Family Dentistry: Suzanne West, DDS	no, NOT SVHC
Vermont	Windham		Jeffrey W. Munson, DDS	no, NOT SVHC
Vermont	Windham		Frank Iluzzi, DDS	no, NOT SVHC
Vermont	Windham		Robert S Ruhl, DMD PC	no, NOT SVHC
Vermont	Windham		West River Family Dental: Jeffrey W. Wallace, DDS	no, NOT SVHC
Vermont	Windham		David M. Heydenreich, DDS	no, NOT SVHC
Vermont	Windham		Dr. Ralph N. Buck, DMD	no, NOT SVHC
Vermont	Windham		Dr. Enrico M. Grippo, DDS	no, NOT SVHC

State	County	Type	Institution Name	Affiliate of SVHC
Vermont	Windham	Behavioral Health Services	Health Care and Rehabilitation Services of Southeastern Vermont	no, NOT SVHC
Vermont	Windham		The Brattleboro Retreat	no, NOT SVHC
Vermont	Windham		Matrix Health Care Systems	no, NOT SVHC
Vermont	Windham		Newfane Wellness	no, NOT SVHC
Vermont	Windham		Mary E. King, MSW	no, NOT SVHC
Vermont	Windham		Maryann K. Parrott, LMHC	no, NOT SVHC
Vermont	Windham		Salam Psychiatric Services	no, NOT SVHC
Vermont	Windham		Deborah Lowery, MA	no, NOT SVHC
Vermont	Windham		Loren S. Cole, LICSW	no, NOT SVHC
Vermont	Windham		David F. Livingston, MA, LMFT	no, NOT SVHC
Vermont	Windham		Reflections Counseling, Susan Kinnersley LICSW	no, NOT SVHC
Vermont	Windham		The Phoenix House Programs	no, NOT SVHC
Vermont	Windham		Marc Laurens Licsw: Timothy N Rowland MD	no, NOT SVHC
Vermont	Windham		Harvey Liss, Psychologist	no, NOT SVHC
Vermont	Windham		Brattleboro Pastoral Counseling Center	no, NOT SVHC
Vermont	Windham		Mr. Christopher M Wesolowski, MSW, LICSW, LADC	no, NOT SVHC
Vermont	Windham		Refilling Your Well Counseling	no, NOT SVHC
Vermont	Windham		Michael Jaro, Counselor	no, NOT SVHC
Vermont	Windham		Helen Schepartz, LICSW	no, NOT SVHC
Vermont	Windham		Kirsten A. Beske, LCMHC, MA, JD	no, NOT SVHC
Vermont	Windham		Maggie Comparetta, LMFT	no, NOT SVHC
Vermont	Windham		Dave Cohen, MA, NCC	no, NOT SVHC
Vermont	Windham		Elan Moses, Counselor	no, NOT SVHC
Vermont	Windham		Jill Neitlich, MSW, LICSW	no, NOT SVHC
Vermont	Windham		Valerie Racine, MEd, MS, LCMHC	no, NOT SVHC
Vermont	Windham		Jennifir Bailes Hart, MA, LCMHC	no, NOT SVHC
Vermont	Windham		Gail Peach, LCMHC, RNBC, NCC,	no, NOT SVHC
Vermont	Windham		Jon Schottland, Counselor, MA	no, NOT SVHC
Vermont	Windham		Rachel Zamore, MA, LMFT	no, NOT SVHC
Vermont	Windham		Marybeth Caseiro, MS, LCMHC	no, NOT SVHC
Vermont	Windham		Sydney Crystal, MSW, LICSW	no, NOT SVHC
Vermont	Windham		Eva M. Shelby, MSW, LICSW	no, NOT SVHC
Vermont	Windham		Joyce Sullivan, MA, LADC	no, NOT SVHC
Vermont	Windham		Nora Riley, LICSW	no, NOT SVHC
Vermont	Windham		Robert Spottswood, MA, LCMHC	no, NOT SVHC
Vermont	Windham		Karen Kamenetzky, MA	no, NOT SVHC
Vermont	Windham		Ted Walls, MA, LCMHC	no, NOT SVHC
Vermont	Windham		Flynn Johnson, MA, LCMHC	no, NOT SVHC
Vermont	Windham		Jean Pollock, MHC, NCC	no, NOT SVHC
Vermont	Windham		Laura Hoskins, MA, LCMHC, NCC	no, NOT SVHC
Vermont	Windham		Rockingham Medical Group (Springfield Medical Care Systems, Inc.)	no, NOT SVHC
Vermont	Windham	Visiting Nurses & Hospice Care	Brattleboro Area Hospice	no, NOT SVHC
Vermont	Windham		BAYADA Home Health Care	no, NOT SVHC
Vermont	Windham	Long term Care & Subacute Care	McGirr Nursing Home	no, NOT SVHC
Vermont	Windham		Pine Heights at Brattleboro Center for Nursing and Rehabilitation	no, NOT SVHC
Vermont	Windham		Thompson Nursing Home	no, NOT SVHC
Vermont	Windham		Vernon Green Nursing Home	no, NOT SVHC
Vermont	Windham			
Vermont	Windham	Physical Therapy & Rehabilitation	Grace Cottage Rehabilitation	no, NOT SVHC
Vermont	Windham		Maple Valley Physical Therapy	no, NOT SVHC
Vermont	Windham		Rockingham Medical Group	no, NOT SVHC
Vermont	Windham		Deborah S. Feiner, RPT	no, NOT SVHC
Vermont	Windham		Geoffrey R. Illingworth, PT	no, NOT SVHC
Vermont	Windham		Karen C. Wallace, MPT	no, NOT SVHC
Vermont	Windham		Valarie Mcgettigan, PT	no, NOT SVHC
Vermont	Windham		Priscilla Svec, RPT	no, NOT SVHC
Vermont	Windham		Angelique Priscilla, PT	no, NOT SVHC
Vermont	Windham		Catherine Audette, PT	no, NOT SVHC
Vermont	Windham		Douglas R. Mccorkle, PT	no, NOT SVHC
Vermont	Windham		New England Wellness Works: Alice Kenney, PT	no, NOT SVHC
Vermont	Windham		George T. Connell, PT	no, NOT SVHC
Vermont	Windham		Deborah S. Feiner, RPT	no, NOT SVHC
Vermont	Windham		Monica C. Mattocks, PTAmore info	no, NOT SVHC
Vermont	Windham		Physical Therapy Services: Michael D. Kindopp	no, NOT SVHC
Vermont	Windham		Denise E. Stevens, PT	no, NOT SVHC

Care Resources in Region				
State	County	Type	Institution Name	Affiliate of SVHC
Vermont	Rutland (Southern only)	Hospital / Medical Center	Rutland Regional Medical Center	no, NOT SVHC
Vermont	Rutland (Southern only)	Primary Care Physician Practice	Mettowee Valley Family Health: Carl E Beckler MD	no, NOT SVHC
Vermont	Rutland (Southern only)	Specialty Care Practice	Thrive Center-The Green Mountains: Donohue Joseph DC	no, NOT SVHC
Vermont	Rutland (Southern only)		Vermont Orthopaedic Clinic	no, NOT SVHC
Vermont	Rutland (Southern only)	Dentistry, Orthodontics, Oral Care	Baasch Dental; David A. Baasch, DDS	no, NOT SVHC
Vermont	Rutland (Southern only)		Michel Frederick, DDS	no, NOT SVHC
Vermont	Rutland (Southern only)	Behavioral Health Services	Maple Leaf Clinic	no, NOT SVHC
Vermont	Rutland (Southern only)		Craig Knapp, PhD	no, NOT SVHC
Vermont	Rutland (Southern only)		SD Associates	no, NOT SVHC
Vermont	Rutland (Southern only)	Visiting Nurses & Hospice Care	The Rutland Area Visiting Nurse Association & Hospice	no, NOT SVHC
Vermont	Rutland (Southern only)	Long term Care & Subacute Care		
Vermont	Rutland (Southern only)	Physical Therapy & Rehabilitation	Source Physical Therapy	no, NOT SVHC
Vermont	Rutland (Southern only)		Amy Peacock, PT	no, NOT SVHC
Vermont	Rutland (Southern only)		Deanne S. Moyer, LPTA	no, NOT SVHC

Care Resources in Region				
State	County	Type	Institution Name	Affiliate of SVHC
New York	Rensselaer	Hospital / Medical Center	St. Mary's Hospital	no, NOT SVHC
New York	Rensselaer		Samaritan Hospital	no, NOT SVHC
New York	Rensselaer		The Burdett Care Center	no, NOT SVHC
New York	Rensselaer	Primary Care Physician Practice	Village Primary Care	no, NOT SVHC
New York	Rensselaer		Schaghticoke Family Health Center	no, NOT SVHC
New York	Rensselaer		Schodack Internal Medicine and Pediatrics	no, NOT SVHC
New York	Rensselaer		Capital Healthcare Associates (CHA)	no, NOT SVHC
New York	Rensselaer		Partners in Family Medicine Troy	no, NOT SVHC
New York	Rensselaer		Partners in Family Medicine Cropseyville	no, NOT SVHC
New York	Rensselaer			
New York	Rensselaer		Specialty Care Practice	
New York	Rensselaer		Arthritis Care PC: Huyck Christopher MD	no, NOT SVHC
New York	Rensselaer		OB/GYN Health Center Associates - Rensselaer	no, NOT SVHC
New York	Rensselaer		Seton Health Pediatrics	no, NOT SVHC
New York	Rensselaer		Millennium Medical Imaging: Haber Harold MD	no, NOT SVHC
New York	Rensselaer		Capital District Podiatry	no, NOT SVHC
New York	Rensselaer		South Troy Health and OnCall Center	no, NOT SVHC
New York	Rensselaer		Seton Health OB-GYN	no, NOT SVHC
New York	Rensselaer		East Greenbush Urgent Care	no, NOT SVHC
New York	Rensselaer		Community Care Physicians, PC	no, NOT SVHC
New York	Rensselaer		VA Clinic Care	no, NOT SVHC
New York	Rensselaer		ImageCare Schodack	no, NOT SVHC
New York	Rensselaer		Schodack Internal Medicine and Pediatrics	no, NOT SVHC
New York	Rensselaer		Urgent Care Center of Schodack	no, NOT SVHC
New York	Rensselaer		Urological Institute of Northeastern New York - Schodack	no, NOT SVHC
New York	Rensselaer		Samaritan Hospital Medical Imaging	no, NOT SVHC
New York	Rensselaer		Capital Healthcare Associates (CHA)	no, NOT SVHC
New York	Rensselaer		Accent Health Care Services Inc.	no, NOT SVHC
New York	Rensselaer		Adept Health Care Services, Inc.	no, NOT SVHC
New York	Rensselaer		PCCS Sleep Disorders Center	no, NOT SVHC
New York	Rensselaer	Dentistry, Orthodontics, Oral Care	Paul S. Bobinski, DDS	no, NOT SVHC
New York	Rensselaer		Laura Zembroski, DDS	no, NOT SVHC
New York	Rensselaer		Phillip Gross, DDS	no, NOT SVHC
New York	Rensselaer		Comfort Dental	no, NOT SVHC
New York	Rensselaer		Dr. Joseph M. Braun, DDS	no, NOT SVHC
New York	Rensselaer		James T. Slade	no, NOT SVHC
New York	Rensselaer		Dr. Steven H. Calderon, DMD	no, NOT SVHC
New York	Rensselaer		Douglas Tucker, DDS	no, NOT SVHC
New York	Rensselaer		Jeremy Messier, DDS	no, NOT SVHC
New York	Rensselaer		Corsetti & Meisel Dental Partnership	no, NOT SVHC
New York	Rensselaer		Pamela Wilson, DDS	no, NOT SVHC
New York	Rensselaer		Joseph R. Lapinski, DDS	no, NOT SVHC
New York	Rensselaer		Phyllis Norton, DDS	no, NOT SVHC
New York	Rensselaer		Natalia M. Bausback, DDS	no, NOT SVHC
New York	Rensselaer		Hudson Valley Dental Care	no, NOT SVHC
New York	Rensselaer		Dr. Christopher H. Reilly, DDS	no, NOT SVHC
New York	Rensselaer		Alexander J Craig DDS	no, NOT SVHC
New York	Rensselaer		Family Dental Care	no, NOT SVHC
New York	Rensselaer		Carney Reilly & Gelder	no, NOT SVHC
New York	Rensselaer		Dr. Donald S. Macintyre, DDS	no, NOT SVHC
New York	Rensselaer		Capital Region Braces	no, NOT SVHC
New York	Rensselaer		Pondview Family Dental Services PC	no, NOT SVHC
New York	Rensselaer		Gary T. Puccio, DDS	no, NOT SVHC
New York	Rensselaer		Aspen Dental - E. Greenbush	no, NOT SVHC
New York	Rensselaer		Greenbush Family Dental	no, NOT SVHC
New York	Rensselaer		Tamarac Valley Med/Dental Center	no, NOT SVHC
New York	Rensselaer		Thomas R. Miller, DDS	no, NOT SVHC
New York	Rensselaer		Judith A Purcell, DDS	no, NOT SVHC
New York	Rensselaer		Brunswick Dental Associates	no, NOT SVHC
New York	Rensselaer		All Access Dental	no, NOT SVHC
New York	Rensselaer		East Hudson Oral Surgery	no, NOT SVHC
New York	Rensselaer		Cooney Orthodontics	no, NOT SVHC
New York	Rensselaer		Dental Services of Troy	no, NOT SVHC
New York	Rensselaer		Capitaland Dental Associates	no, NOT SVHC
New York	Rensselaer		Peter H Collins, DDS	no, NOT SVHC
New York	Rensselaer		Sullivan & Kennedy	no, NOT SVHC
New York	Rensselaer		Western Dental Care	no, NOT SVHC
New York	Rensselaer		Dr. Robert A. Olsen, DDS	no, NOT SVHC
New York	Rensselaer		Dr. Elizabeth A. Riccio, DDS	no, NOT SVHC
New York	Rensselaer		Affordable Family Dentistry	no, NOT SVHC
New York	Rensselaer		Robert H. Hill II DDS	no, NOT SVHC
New York	Rensselaer		Dr. Mark J. Petrone, DMD	no, NOT SVHC
New York	Rensselaer		Dr. Donald S. Cox, DDS	no, NOT SVHC
New York	Rensselaer		Justin Alan, DMD	no, NOT SVHC
New York	Rensselaer		Steven Morton, DDS	no, NOT SVHC
New York	Rensselaer		Valerie Bidwell	no, NOT SVHC
New York	Rensselaer		Michele Rigney	no, NOT SVHC
New York	Rensselaer		Mark Weinberger, DDS	no, NOT SVHC
New York	Rensselaer		Francis Spataro Jr., DDS	no, NOT SVHC
New York	Rensselaer		David Levine, DDS	no, NOT SVHC
New York	Rensselaer		Barry Rosenblat, DDS	no, NOT SVHC
New York	Rensselaer		Praveen Vallabhaneni, DDS	no, NOT SVHC
New York	Rensselaer		Thomas Hoppe, DDS	no, NOT SVHC
New York	Rensselaer		Manvin Kessler, DDS	no, NOT SVHC
New York	Rensselaer		Claudia Schwendeman, DDS	no, NOT SVHC
New York	Rensselaer		James De Bonis, DDS	no, NOT SVHC
New York	Rensselaer		Dr. Shambhuprasad M. Mehta, DDS	no, NOT SVHC
New York	Rensselaer		Matthew Clemente, DDS	no, NOT SVHC
New York	Rensselaer		Jeffrey Adams, DDS	no, NOT SVHC
New York	Rensselaer		Timothy Healey, DDS	no, NOT SVHC
New York	Rensselaer		Gerald Beck, DDS	no, NOT SVHC
New York	Rensselaer		Dr. John E. Crable, DDS	no, NOT SVHC
New York	Rensselaer		Thomas Finken, DDS	no, NOT SVHC

State	County	Type	Institution Name	Affiliate of SVHC
New York	Rensselaer	Behavioral Health Services	Inpatient Psychiatric Unit of a General Hospital - Samaritan Hospital	no, NOT SVHC
New York	Rensselaer		Mental Health Empowerment Project, Inc.	no, NOT SVHC
New York	Rensselaer		Samaritan Hospital Outpatient Mental Health Clinic	no, NOT SVHC
New York	Rensselaer		Rensselaer City Center Clinic	no, NOT SVHC
New York	Rensselaer		Samaritan Hospital Psychiatric Inpatient Unit	no, NOT SVHC
New York	Rensselaer		Continuing Day Treatment Services- Samaritan Hospital	no, NOT SVHC
New York	Rensselaer		Unity House of Troy, Inc.	no, NOT SVHC
New York	Rensselaer		Joseph's House and Shelter, Inc.	no, NOT SVHC
New York	Rensselaer		Rensselaer County Dept of Mental Health Case Management	no, NOT SVHC
New York	Rensselaer		St. Anne Institute	no, NOT SVHC
New York	Rensselaer		The Workshop, Inc. d/b/a Northeast Career Plan.	no, NOT SVHC
New York	Rensselaer		Family Support Services	no, NOT SVHC
New York	Rensselaer		St. Catherine's Center, FSS-Children & Family	no, NOT SVHC
New York	Rensselaer		Vanderheyden Hall, Inc.	no, NOT SVHC
New York	Rensselaer		Rensselaer County Dept. of Youth-Innovative Rehab	no, NOT SVHC
New York	Rensselaer		Malone Anthony F MD	no, NOT SVHC
New York	Rensselaer		Bello Scott C MD	no, NOT SVHC
New York	Rensselaer		Behavioral Health Outpatient Services	no, NOT SVHC
New York	Rensselaer		PCCS Sleep Disorders Center	no, NOT SVHC
New York	Rensselaer		Rensselaer County Mental Health	no, NOT SVHC
New York	Rensselaer		My Continuing Treatment	no, NOT SVHC
New York	Rensselaer		Van Dyne Willis T PhD	no, NOT SVHC
New York	Rensselaer		Malone Anthony F MD	no, NOT SVHC
New York	Rensselaer		Fernandez Patricia M MD	no, NOT SVHC
New York	Rensselaer		Dr. Alex G Marsal	no, NOT SVHC
New York	Rensselaer	Visiting Nurses & Hospice Care	Eddy Visiting Nurse Association (Troy)	no, NOT SVHC
New York	Rensselaer		VNA of Albany VNA of Saratoga VNA of Rensselaer (Albany)	no, NOT SVHC
New York	Rensselaer		The Community Hospice Inc (Rensselaer)	no, NOT SVHC
New York	Rensselaer		Accu Care Home Health Services, Inc.	no, NOT SVHC
New York	Rensselaer		Danforth Home Care Services Agency	no, NOT SVHC
New York	Rensselaer		Danforth Limited Licensed Home Care	no, NOT SVHC
New York	Rensselaer	Long term Care & Subacute Care	The Center for Nursing and Rehabilitation at Hoosick Falls	no, NOT SVHC
New York	Rensselaer		The Springs Nursing and Rehabilitation Centre	no, NOT SVHC
New York	Rensselaer		Van Rensselaer Manor	no, NOT SVHC
New York	Rensselaer		Diamond Hill Nursing and Rehabilitation Center	no, NOT SVHC
New York	Rensselaer		Eddy Heritage House Nursing and Rehabilitation Center	no, NOT SVHC
New York	Rensselaer		Evergreen Commons	no, NOT SVHC
New York	Rensselaer		James A Eddy Memorial Geriatric Center	no, NOT SVHC
New York	Rensselaer		Riverside Center for Rehabilitation and Nursing	no, NOT SVHC
New York	Rensselaer		Rosewood Rehabilitation and Nursing Center	no, NOT SVHC
New York	Rensselaer	Physical Therapy & Rehabilitation	Maccio Physical Therapy	no, NOT SVHC
New York	Rensselaer		Columbia Physical Therapy	no, NOT SVHC
New York	Rensselaer		Riverfront Physical Therapy	no, NOT SVHC
New York	Rensselaer		Brunswick Physical Therapy	no, NOT SVHC
New York	Rensselaer		William P. Jarosz, PT	no, NOT SVHC
New York	Rensselaer		Physical Therapy-Hoosick Falls	no, NOT SVHC
New York	Rensselaer		Browning & Butler Physical Therapy	no, NOT SVHC
New York	Rensselaer		Michelle Gladd, PT	no, NOT SVHC
New York	Rensselaer		Rosewood Gardens	no, NOT SVHC
New York	Rensselaer		Ijunanya Holder, DPT	no, NOT SVHC
New York	Rensselaer		Seton Health Physical Rehab	no, NOT SVHC
New York	Rensselaer		Megan C. Ortolano, PT	no, NOT SVHC
New York	Rensselaer		Lisa M. Brock, MSPT	no, NOT SVHC
New York	Rensselaer		Peter P. Martin, OTR	no, NOT SVHC
New York	Rensselaer		Ciani & Morris Physical Therapy	no, NOT SVHC
New York	Rensselaer		Greenbush Associates	no, NOT SVHC
New York	Rensselaer		Physical Therapy Associates	no, NOT SVHC
New York	Rensselaer		Lori H. Ryan, PT	no, NOT SVHC
New York	Rensselaer		Kathleen C. Wright, PT	no, NOT SVHC
New York	Rensselaer		Northwoods Rehabilitation	no, NOT SVHC
New York	Rensselaer		Dolores F. Montero, PT	no, NOT SVHC
New York	Rensselaer		Diane E. Film, PT	no, NOT SVHC
New York	Rensselaer		Heather L. Brunell, PT	no, NOT SVHC
New York	Rensselaer		Frank Isele, PT	no, NOT SVHC
New York	Rensselaer		Donna Puiatti, PT	no, NOT SVHC
New York	Rensselaer		Brian C. Jutton, PT	no, NOT SVHC

Care Resources in Region				
State	County	Type	Institution Name	Affiliate of SVHC
New York	Washington	Hospital / Medical Center		
New York	Washington	Primary Care Physician Practice	Greenwich Primary Care Center	no, NOT SVHC
New York	Washington		Greenwich Family Health Center	no, NOT SVHC
New York	Washington		Convenient Medical Care	no, NOT SVHC
New York	Washington		Salem Family Health Center	no, NOT SVHC
New York	Washington		Hudson Falls Family Medicine	no, NOT SVHC
New York	Washington		Hudson Falls Internal Medicine	no, NOT SVHC
New York	Washington		Adirondack Medical Associates	no, NOT SVHC
New York	Washington		Cambridge Family Health Center	no, NOT SVHC
New York	Washington	Specialty Care Practice	Tri County Eye Care	no, NOT SVHC
New York	Washington		Bay Optical of Greenwich	no, NOT SVHC
New York	Washington		Behavioral Health Services	no, NOT SVHC
New York	Washington		Community Maternity Services	no, NOT SVHC
New York	Washington		Foothills Clinic	no, NOT SVHC
New York	Washington		Fine Family Foot Care: Fine Robert M DPM	no, NOT SVHC
New York	Washington		Adirondack Medical Associates	no, NOT SVHC
New York	Washington		Cambridge Family Health Center	no, NOT SVHC
New York	Washington	Dentistry, Orthodontics, Oral Care	Byre Orthodontics	no, NOT SVHC
New York	Washington		Family Dentistry PC (Granville, NY)	no, NOT SVHC
New York	Washington		Valerio, Dr. Dennis J	no, NOT SVHC
New York	Washington		Pultorak Francis S DDS	no, NOT SVHC
New York	Washington		Dr. Joseph T. Gallagher, DDS	no, NOT SVHC
New York	Washington		Greenwich Family Dentistry	no, NOT SVHC
New York	Washington		Fort Edward Family Dentistry	no, NOT SVHC
New York	Washington		Potvin & Potvin	no, NOT SVHC
New York	Washington		Adirondack Medical Associates	no, NOT SVHC
New York	Washington		John P Lawrence Ddm: Lawrence John P DDS	no, NOT SVHC
New York	Washington		Cohen Mitchell a DDS	no, NOT SVHC
New York	Washington		Long Richard J DDS	no, NOT SVHC
New York	Washington		Redmond Stephen DDS	no, NOT SVHC
New York	Washington		Van Schaick John F DDS	no, NOT SVHC
New York	Washington		Edward Ford Dental Center	no, NOT SVHC
New York	Washington		Dr. Joseph E. Potvin, DDS	no, NOT SVHC
New York	Washington		Mc Cullough Patrick DDS	no, NOT SVHC
New York	Washington		Himes Connie	no, NOT SVHC
New York	Washington		Dr. Mitchell L. Potvin III, DDS	no, NOT SVHC
New York	Washington		Dr. Arnold Small, DDS	no, NOT SVHC
New York	Washington	Behavioral Health Services	Behavioral Health Services (Cambridge, NY)	no, NOT SVHC
New York	Washington		The Community Mental Health Center Outpatient Services	no, NOT SVHC
New York	Washington		Warren-Washington Association for Mental Health	no, NOT SVHC
New York	Washington		WWAMH/Community Living Apartments	no, NOT SVHC
New York	Washington		Caleo Counseling Services	no, NOT SVHC
New York	Washington		Central New York Psychiatric Center	no, NOT SVHC
New York	Washington		Washington County Community Service Administration	no, NOT SVHC
New York	Washington		Great Meadow Behavioral Health Unit	no, NOT SVHC
New York	Washington		Adirondack Samaritan Counseling	no, NOT SVHC
New York	Washington	Visiting Nurses & Hospice Care	Hospice of Washington County	no, NOT SVHC
New York	Washington		Pleasant Valley	no, NOT SVHC
New York	Washington	Long term Care & Subacute Care	Fort Hudson Nursing Center, Inc.	no, NOT SVHC
New York	Washington		Indian River Rehabilitation and Nursing Center	no, NOT SVHC
New York	Washington		Pleasant Valley	no, NOT SVHC
New York	Washington		The Orchard Nursing and Rehabilitation Centre	no, NOT SVHC
New York	Washington	Physical Therapy & Rehabilitation	Donna P Johnson Physical Therapy, PC	no, NOT SVHC
New York	Washington		Kessler Institute For Rehab	no, NOT SVHC
New York	Washington		Orthopedic & Spine Physical Therapy	no, NOT SVHC
New York	Washington		Select Rehabilitation Inc	no, NOT SVHC
New York	Washington		Hillary S. Adams, DPT	no, NOT SVHC
New York	Washington		Salem Family Health Center	no, NOT SVHC
New York	Washington		Eileen K. Dashnaw, OTR	no, NOT SVHC
New York	Washington		Harrison Dean DC	no, NOT SVHC
New York	Washington		Emily J. Zeigler, DPT	no, NOT SVHC
New York	Washington		Donna P Johnson Physical Therapy, PC	no, NOT SVHC
New York	Washington		Brooke L. Morgan, PT	no, NOT SVHC
New York	Washington		Helping Hands Physical Therapy	no, NOT SVHC
New York	Washington		Barbara J. Pratt, PT	no, NOT SVHC
New York	Washington		Carolyn B. Hughes, MSPT	no, NOT SVHC
New York	Washington		Kimberly Sullivan, PT	no, NOT SVHC

Care Resources in Region				
State	County	Type	Institution Name	Affiliate of SVHC
New York	Albany (Eastern Only)	Hospital / Medical Center	Albany Medical Center	no, NOT SVHC
New York	Albany (Eastern Only)		Albany Memorial Hospital	no, NOT SVHC
New York	Albany (Eastern Only)		St. Peters Hospital	no, NOT SVHC
New York	Albany (Eastern Only)		Albany Stratton VA Medical Center	no, NOT SVHC
New York	Albany (Eastern Only)	Primary Care Physician Practice	Riverside Family Medical Group (Northeast Health St. Peter's Health Partners)	no, NOT SVHC
New York	Albany (Eastern Only)		Capital District Internal Medicine	no, NOT SVHC
New York	Albany (Eastern Only)		Internal Medicine Associates	no, NOT SVHC
New York	Albany (Eastern Only)		Community Care Physicians Latham Internal Medicine	no, NOT SVHC
New York	Albany (Eastern Only)		Albany Family Medicine - Delmar	no, NOT SVHC
New York	Albany (Eastern Only)		Community Care Physicians Internal Medicine - Delmar	no, NOT SVHC
New York	Albany (Eastern Only)		Whitney M. Young Jr. Health Services	no, NOT SVHC
New York	Albany (Eastern Only)	Specialty Care Practice	Albany Eye Associates: Kassoff Jordan MD	no, NOT SVHC
New York	Albany (Eastern Only)		Capital District Pediatric	no, NOT SVHC
New York	Albany (Eastern Only)		Latham Medical Group	no, NOT SVHC
New York	Albany (Eastern Only)		Community Care Pediatrics - Latham	no, NOT SVHC
New York	Albany (Eastern Only)		Northeast Urological Specialists: Barry A. Shuman, MD	no, NOT SVHC
New York	Albany (Eastern Only)		Williams Center Plastic Surgery Specialists	no, NOT SVHC
New York	Albany (Eastern Only)		Community Care Physicians, PC Urgent Care	no, NOT SVHC
New York	Albany (Eastern Only)		Community Care General Surgery	no, NOT SVHC
New York	Albany (Eastern Only)		Albany Medical Center - Radiology	no, NOT SVHC
New York	Albany (Eastern Only)		Interventional Radiology	no, NOT SVHC
New York	Albany (Eastern Only)		Urological Institute of Northeastern New York	no, NOT SVHC
New York	Albany (Eastern Only)		The Breast Center at ImageCare	no, NOT SVHC
New York	Albany (Eastern Only)		The Prostate Center	no, NOT SVHC
New York	Albany (Eastern Only)		WE CARE Medically-Supervised Weight Loss Program	no, NOT SVHC
New York	Albany (Eastern Only)		Foot Specialists Associates: Scott Pickett, DPM	no, NOT SVHC
New York	Albany (Eastern Only)		ImageCare Latham	no, NOT SVHC
New York	Albany (Eastern Only)		Diabetes & Nutrition Center	no, NOT SVHC
New York	Albany (Eastern Only)		Community Vein Care	no, NOT SVHC
New York	Albany (Eastern Only)		Audiology Center at Community Care Physicians	no, NOT SVHC
New York	Albany (Eastern Only)		Community Care Dermatology & Medical Aesthetics	no, NOT SVHC
New York	Albany (Eastern Only)		Community Care Podiatry	no, NOT SVHC
New York	Albany (Eastern Only)		Retina & Vitreous Specialists	no, NOT SVHC
New York	Albany (Eastern Only)		OB/GYN Health Center Associates - Delmar	no, NOT SVHC
New York	Albany (Eastern Only)		ImageCare Delmar	no, NOT SVHC
New York	Albany (Eastern Only)		Capital Region Special Surgery	no, NOT SVHC
New York	Albany (Eastern Only)		Northeast Health Diabetes Center	no, NOT SVHC
New York	Albany (Eastern Only)		Whitney M. Young Jr. Health Services	no, NOT SVHC

State	County	Type	Institution Name	Affiliate of SVHC
New York	Albany (Eastern Only)	Dentistry, Orthodontics, Oral Care	Lozman Orthodontics	no, NOT SVHC
New York	Albany (Eastern Only)		Barra Elizabeth DDS	no, NOT SVHC
New York	Albany (Eastern Only)		Dental Society Third District	no, NOT SVHC
New York	Albany (Eastern Only)		Capital District Oral Surgeons	no, NOT SVHC
New York	Albany (Eastern Only)		Capital Region Center-Dental: Marra Frederick J DDS	no, NOT SVHC
New York	Albany (Eastern Only)		Benco Dental Supply Co	no, NOT SVHC
New York	Albany (Eastern Only)		Nancy A. Cavotta, DDS	no, NOT SVHC
New York	Albany (Eastern Only)		Aspen Dental - Latham	no, NOT SVHC
New York	Albany (Eastern Only)		East Hudson Oral Surgery: Dr. Douglas B Smail	no, NOT SVHC
New York	Albany (Eastern Only)		Cooney Orthodontics	no, NOT SVHC
New York	Albany (Eastern Only)		Pathare & Pathare: Pathare Prakesh DDS	no, NOT SVHC
New York	Albany (Eastern Only)		Dr. Debra J. Check, DDS	no, NOT SVHC
New York	Albany (Eastern Only)		Vallecorsa David J DDS	no, NOT SVHC
New York	Albany (Eastern Only)		Mark D Curry DDS	no, NOT SVHC
New York	Albany (Eastern Only)		Family Dentistry & Denture: Bentley Paul P DDS	no, NOT SVHC
New York	Albany (Eastern Only)		Kane Michael J DDS	no, NOT SVHC
New York	Albany (Eastern Only)		Conway Stephen J DDS	no, NOT SVHC
New York	Albany (Eastern Only)		Sundstrom Roseanne DDS	no, NOT SVHC
New York	Albany (Eastern Only)		Batto Catherine	no, NOT SVHC
New York	Albany (Eastern Only)		Toomajian Jr Martin A DDS	no, NOT SVHC
New York	Albany (Eastern Only)		Michael J Maloney, D.D.S., PC	no, NOT SVHC
New York	Albany (Eastern Only)		Hogan William J DDS	no, NOT SVHC
New York	Albany (Eastern Only)		Loudonville Dental Care	no, NOT SVHC
New York	Albany (Eastern Only)		Albany Dental Care: Winter Harvey DDS	no, NOT SVHC
New York	Albany (Eastern Only)		Sabai M DDS	no, NOT SVHC
New York	Albany (Eastern Only)		A.R. Wynnkiw, DDS, PLLC	no, NOT SVHC
New York	Albany (Eastern Only)		Ramsay Rudolph a DDS	no, NOT SVHC
New York	Albany (Eastern Only)		Harff George D DDS	no, NOT SVHC
New York	Albany (Eastern Only)		Capital District Oral & Maxillofacial Surgeons, LLC	no, NOT SVHC
New York	Albany (Eastern Only)		Jenna Fiman, DMD	no, NOT SVHC
New York	Albany (Eastern Only)		Dr. Timothy F. Gary, DDS	no, NOT SVHC
New York	Albany (Eastern Only)		Mottolese & Mottolese: Mottolese Patrick J DDS	no, NOT SVHC
New York	Albany (Eastern Only)		Adirondack Oral Surgery	no, NOT SVHC
New York	Albany (Eastern Only)		Colonie Dental	no, NOT SVHC
New York	Albany (Eastern Only)		Dr. Mijin Kim, DDS	no, NOT SVHC
New York	Albany (Eastern Only)		Hudson Dental PC: Chung Don DDS	no, NOT SVHC
New York	Albany (Eastern Only)		Dr. Abdul H. Khan, DDS	no, NOT SVHC
New York	Albany (Eastern Only)		Albany Upstate Dental	no, NOT SVHC
New York	Albany (Eastern Only)		Levine & Lipnick	no, NOT SVHC
New York	Albany (Eastern Only)		Dr. Ilze I. Eglitis, DDS	no, NOT SVHC
New York	Albany (Eastern Only)		Dr. Daniel P. Digiacoia, DDS	no, NOT SVHC
New York	Albany (Eastern Only)		Alvarez Dental PLLC	no, NOT SVHC
New York	Albany (Eastern Only)		Deitz Robert M DDS	no, NOT SVHC
New York	Albany (Eastern Only)		Bucher John V DDS	no, NOT SVHC
New York	Albany (Eastern Only)		Family & Cosmetic Dentistry	no, NOT SVHC
New York	Albany (Eastern Only)		Dr. Robert Mass, DDS	no, NOT SVHC
New York	Albany (Eastern Only)		Lyons Michael F DDS	no, NOT SVHC
New York	Albany (Eastern Only)		Capital Region Peridontics: Reed Ference DDS	no, NOT SVHC
New York	Albany (Eastern Only)		Esmay Timothy R DDS	no, NOT SVHC
New York	Albany (Eastern Only)		Levine David DDS	no, NOT SVHC
New York	Albany (Eastern Only)		Mahon Family & Dentistry: Brenner Robert	no, NOT SVHC
New York	Albany (Eastern Only)		Barclay & Bresin: Barclay Lee T DDS	no, NOT SVHC
New York	Albany (Eastern Only)		Drs. Decker, Sbuttoni, Boghosian, DiCerbo & Lawless	no, NOT SVHC
New York	Albany (Eastern Only)		Gaetano Gialanella D.D.S. PLLC	no, NOT SVHC
New York	Albany (Eastern Only)		Jones William S DDS	no, NOT SVHC
New York	Albany (Eastern Only)		Kelman & Bergman: Kelman Kenneth DDS	no, NOT SVHC
New York	Albany (Eastern Only)		St. Peter's Dental Center	no, NOT SVHC
New York	Albany (Eastern Only)		Patterson Dental Co	no, NOT SVHC
New York	Albany (Eastern Only)		William Primomo DDS, Robert Herzog DDS	no, NOT SVHC
New York	Albany (Eastern Only)		Delmar Dental Medicine	no, NOT SVHC
New York	Albany (Eastern Only)		Testo Robert a DDS	no, NOT SVHC
New York	Albany (Eastern Only)		Haven Edmond M DDS	no, NOT SVHC
New York	Albany (Eastern Only)		Dr. Howard Tocker, DDS	no, NOT SVHC
New York	Albany (Eastern Only)		Conte Michael DDS	no, NOT SVHC
New York	Albany (Eastern Only)		Frainman Selwyn a DDS	no, NOT SVHC
New York	Albany (Eastern Only)		Dr. Howard Tocker, DDS	no, NOT SVHC
New York	Albany (Eastern Only)		Marfurt Jeffrey DDS	no, NOT SVHC
New York	Albany (Eastern Only)		Alvarez Dental PLLC	no, NOT SVHC
New York	Albany (Eastern Only)		GHI Family Dental Practice	no, NOT SVHC
New York	Albany (Eastern Only)		Karol & Polsinello: Polsinello Mark J DDS	no, NOT SVHC
New York	Albany (Eastern Only)		Nista Joseph DDS	no, NOT SVHC
New York	Albany (Eastern Only)		Westgate Smiles Albany	no, NOT SVHC
New York	Albany (Eastern Only)		Mohamed Ghouse Haseena DDS	no, NOT SVHC
New York	Albany (Eastern Only)		Dr. William B. Somerville, DDS	no, NOT SVHC
New York	Albany (Eastern Only)		Percison Periodontics	no, NOT SVHC
New York	Albany (Eastern Only)		Maestro Dentistry - Christopher J. Maestro, D.M.D., F.A.G.D	no, NOT SVHC
New York	Albany (Eastern Only)		Rezay Karen	no, NOT SVHC
New York	Albany (Eastern Only)		Gable Marianne DDS	no, NOT SVHC
New York	Albany (Eastern Only)		Landau Michael a DDS	no, NOT SVHC
New York	Albany (Eastern Only)		Taranto Robert N DDS	no, NOT SVHC

State	County	Type	Institution Name	Affiliate of SVHC
New York	Albany (Eastern Only)	Behavioral Health Services	Albany Behavioral Health Services	no, NOT SVHC
New York	Albany (Eastern Only)		Office of Mental Health: Psychiatric Center	no, NOT SVHC
New York	Albany (Eastern Only)		Vitality Physicians Group Practice PC. Treatment Facility	no, NOT SVHC
New York	Albany (Eastern Only)		Families Together In NYS Inc	no, NOT SVHC
New York	Albany (Eastern Only)		Clearview Center	no, NOT SVHC
New York	Albany (Eastern Only)		Human Resource Associates	no, NOT SVHC
New York	Albany (Eastern Only)		Capital District Psychiatric Center	no, NOT SVHC
New York	Albany (Eastern Only)		Parsons Child and Family Center	no, NOT SVHC
New York	Albany (Eastern Only)		Albany Medical Center Psychiatric Inpatient Unit	no, NOT SVHC
New York	Albany (Eastern Only)		Albany County ACT Program	no, NOT SVHC
New York	Albany (Eastern Only)		Equinox, Inc.	no, NOT SVHC
New York	Albany (Eastern Only)		Capital District Psychiatric Center	no, NOT SVHC
New York	Albany (Eastern Only)		Capital Area Peer Services	no, NOT SVHC
New York	Albany (Eastern Only)		Counseling Care and Services, Inc.	no, NOT SVHC
New York	Albany (Eastern Only)		Homeless and Travelers Aid Society	no, NOT SVHC
New York	Albany (Eastern Only)		Rehabilitation Support Services, Inc.	no, NOT SVHC
New York	Albany (Eastern Only)		Edward J. Hickling, PSYD	no, NOT SVHC
New York	Albany (Eastern Only)		Pinnacle Behavioral Health: Mc Clune Deborah L	no, NOT SVHC
New York	Albany (Eastern Only)		Dr. Deborah L. Kriss, MD	no, NOT SVHC
New York	Albany (Eastern Only)		Residential Opportunities Inc: Nordhauser Micaela MD	no, NOT SVHC
New York	Albany (Eastern Only)		Children's Neuropsychological Services, PLLC	no, NOT SVHC
New York	Albany (Eastern Only)		Northeast Psychological Associates	no, NOT SVHC
New York	Albany (Eastern Only)		Kamer Psychological Associates: Mooney W Terrence PHD	no, NOT SVHC
New York	Albany (Eastern Only)		Behavioral Health Specialists: Marrazo Martin J PHD	no, NOT SVHC
New York	Albany (Eastern Only)		Pine Bush Mental Health: Ross Susan A PHD	no, NOT SVHC
New York	Albany (Eastern Only)		Albany County Dept of Mental Health Case Management	no, NOT SVHC
New York	Albany (Eastern Only)	Visiting Nurses & Hospice Care	Hospice & Palliative Care Association	no, NOT SVHC
New York	Albany (Eastern Only)		Visiting Nurse Association-Albany Inc	no, NOT SVHC
New York	Albany (Eastern Only)		St. Peter's Home Care	no, NOT SVHC
New York	Albany (Eastern Only)		Interim Healthcare	no, NOT SVHC
New York	Albany (Eastern Only)		Visiting Nurses Home Care	no, NOT SVHC
New York	Albany (Eastern Only)	Long term Care & Subacute Care	Eddy Village Green	no, NOT SVHC
New York	Albany (Eastern Only)		Albany County Nursing Home	no, NOT SVHC
New York	Albany (Eastern Only)		Bethlehem Commons Care Center	no, NOT SVHC
New York	Albany (Eastern Only)		Eddy Village Green at Beverwyck	no, NOT SVHC
New York	Albany (Eastern Only)		Guilderland Center Rehabilitation and Extended Care Facility	no, NOT SVHC
New York	Albany (Eastern Only)		Hudson Park Rehabilitation and Nursing Center	no, NOT SVHC
New York	Albany (Eastern Only)		Our Lady of Hope Residence-Little Sisters of the Poor	no, NOT SVHC
New York	Albany (Eastern Only)		Our Lady of Mercy Life Center	no, NOT SVHC
New York	Albany (Eastern Only)		St Margarets Center	no, NOT SVHC
New York	Albany (Eastern Only)		St. Peter's Nursing and Rehabilitation Center	no, NOT SVHC
New York	Albany (Eastern Only)		Teresian House Nursing Home Co Inc	no, NOT SVHC
New York	Albany (Eastern Only)	Physical Therapy & Rehabilitation	Community Care Physical Therapy - Latham	no, NOT SVHC
New York	Albany (Eastern Only)		Community Care Physical Therapy - Delmar	no, NOT SVHC
New York	Albany (Eastern Only)		Advanced Physical Therapy Of Albany PC	no, NOT SVHC
New York	Albany (Eastern Only)		RJN Physical Therapy PLLC	no, NOT SVHC
New York	Albany (Eastern Only)		Repsher & Associates Orthopaedic,Physical & Occupational Therapy	no, NOT SVHC
New York	Albany (Eastern Only)		New York Physical Therapy	no, NOT SVHC
New York	Albany (Eastern Only)		Absolute Physical Therapy	no, NOT SVHC
New York	Albany (Eastern Only)		Manual Physical Therapy Associates	no, NOT SVHC
New York	Albany (Eastern Only)		Albany Medical Center : Physical TherapyOutpatient	no, NOT SVHC
New York	Albany (Eastern Only)		Michele L'hommedieu, PT	no, NOT SVHC
New York	Albany (Eastern Only)		Janel L. Carver, DPT	no, NOT SVHC
New York	Albany (Eastern Only)		Terri J. Johnson, PTA	no, NOT SVHC
New York	Albany (Eastern Only)		Kara L. Ennis, PT	no, NOT SVHC
New York	Albany (Eastern Only)		Center For Myofascial Wellness	no, NOT SVHC
New York	Albany (Eastern Only)		Barbara A. Plotzker, PT	no, NOT SVHC
New York	Albany (Eastern Only)		Annette M. Smith, MSPT	no, NOT SVHC
New York	Albany (Eastern Only)		Wayne W. Griffith Jr, AAS	no, NOT SVHC
New York	Albany (Eastern Only)		Capital Region Physical Therapy	no, NOT SVHC
New York	Albany (Eastern Only)		St Peter's Rehabilitation Services	no, NOT SVHC
New York	Albany (Eastern Only)		Leslie A. Leo, OTR	no, NOT SVHC
New York	Albany (Eastern Only)		Brian Reese, PT	no, NOT SVHC
New York	Albany (Eastern Only)		Shannon Leggett, PT	no, NOT SVHC
New York	Albany (Eastern Only)		Kathleen A Hayword, PTA	no, NOT SVHC

Care Resources in Region				
State	County	Type	Institution Name	Affiliate of SVHC
New York	Schenectady (Eastern Only)	Hospital / Medical Center	Ellis Hospital	no, NOT SVHC
New York	Schenectady (Eastern Only)		Sunnyview Rehabilitation Hospital	no, NOT SVHC
New York	Schenectady (Eastern Only)	Primary Care Physician Practice	Ellis Primary Care - Nott Street, Schenectady	no, NOT SVHC
New York	Schenectady (Eastern Only)		Community Care Physicians Niskayuna Family Medicine	no, NOT SVHC
New York	Schenectady (Eastern Only)		Capital Care Family Practice: Woodruff Barbara A	no, NOT SVHC
New York	Schenectady (Eastern Only)		Capital Care Family Practice: Lindman Harry MD	no, NOT SVHC
New York	Schenectady (Eastern Only)		Five Corners Family Practice: Tuttle Donna MD	no, NOT SVHC
New York	Schenectady (Eastern Only)		Community Care Physicians Niskayuna Internal Medicine	no, NOT SVHC
New York	Schenectady (Eastern Only)		Ellis Internal Medicine	no, NOT SVHC
New York	Schenectady (Eastern Only)	Specialty Care Practice	Ellis Pediatric Care	no, NOT SVHC
New York	Schenectady (Eastern Only)		ImageCare Niskayuna	no, NOT SVHC
New York	Schenectady (Eastern Only)		Community Care Physicians Urgent Care Center of Niskayuna	no, NOT SVHC
New York	Schenectady (Eastern Only)		Schenectady Regional Orthopedic Associates	no, NOT SVHC
New York	Schenectady (Eastern Only)		Child Program & Family Resources: Gangemi Marcia A	no, NOT SVHC
New York	Schenectady (Eastern Only)		River Road Internal Medicine Multi-specialty group	no, NOT SVHC
New York	Schenectady (Eastern Only)		Farber Martin S MD	no, NOT SVHC
New York	Schenectady (Eastern Only)		Mohawk Multi Specialty	no, NOT SVHC

State	County	Type	Institution Name	Affiliate of SVHC
New York	Schenectady (Eastern Only)	Dentistry, Orthodontics, Oral Care	Hal Sossner, DMD	no, NOT SVHC
New York	Schenectady (Eastern Only)		Rizzuto & Berls: Rizzuto Bart M DDS	no, NOT SVHC
New York	Schenectady (Eastern Only)		Glover Richard DDS MS	no, NOT SVHC
New York	Schenectady (Eastern Only)		Sandmann Douglas A	no, NOT SVHC
New York	Schenectady (Eastern Only)		Glenville Dental	no, NOT SVHC
New York	Schenectady (Eastern Only)		Szymczak Robert DDS	no, NOT SVHC
New York	Schenectady (Eastern Only)		Nevard Shelly DDS	no, NOT SVHC
New York	Schenectady (Eastern Only)		Dr. Rebecca K. Szymczak Evans, DDS	no, NOT SVHC
New York	Schenectady (Eastern Only)		Scotia-Glenville Dental Center	no, NOT SVHC
New York	Schenectady (Eastern Only)		Robert M. Scotto, DDS PC	no, NOT SVHC
New York	Schenectady (Eastern Only)		Coppola David M DDS	no, NOT SVHC
New York	Schenectady (Eastern Only)		Oyangen Royd Dentist Center	no, NOT SVHC
New York	Schenectady (Eastern Only)		Capital Smiles Dr. Shiloh Lieberman DDS LLC	no, NOT SVHC
New York	Schenectady (Eastern Only)		Peter D. Gold, DDS	no, NOT SVHC
New York	Schenectady (Eastern Only)		Frederick R. Levine, DDS	no, NOT SVHC
New York	Schenectady (Eastern Only)		Rotterdam Dental Arts	no, NOT SVHC
New York	Schenectady (Eastern Only)		Foreman David a DDS	no, NOT SVHC
New York	Schenectady (Eastern Only)		Advanced Aesthetics Dentistry : Oyangen Roy DDS	no, NOT SVHC
New York	Schenectady (Eastern Only)		Aspen Dental - Rotterdam	no, NOT SVHC
New York	Schenectady (Eastern Only)		Noorani Dental: Noorani Aliakbar DDS	no, NOT SVHC
New York	Schenectady (Eastern Only)		Kaplan David DDS	no, NOT SVHC
New York	Schenectady (Eastern Only)		Bettina Pels-Wetzel, D.D.S	no, NOT SVHC
New York	Schenectady (Eastern Only)		Kurkowski George J DDS	no, NOT SVHC
New York	Schenectady (Eastern Only)		Betts David J DDS	no, NOT SVHC
New York	Schenectady (Eastern Only)		Schwartz Family Dentistry: Schwartz Kenneth DDS	no, NOT SVHC
New York	Schenectady (Eastern Only)		Breault & Mc Govern	no, NOT SVHC
New York	Schenectady (Eastern Only)		Union Street Dental	no, NOT SVHC
New York	Schenectady (Eastern Only)		Oral & Maxillofacial Surgery	no, NOT SVHC
New York	Schenectady (Eastern Only)		Avril D'Souza DMD PC	no, NOT SVHC
New York	Schenectady (Eastern Only)		Scotia-Glenville Dental Center: Backer Jeffrey M DDS	no, NOT SVHC
New York	Schenectady (Eastern Only)		Sandmann Douglas A	no, NOT SVHC
New York	Schenectady (Eastern Only)		Vinciguerra Benjamin J DDS	no, NOT SVHC
New York	Schenectady (Eastern Only)		Loffredo Barry DDS	no, NOT SVHC
New York	Schenectady (Eastern Only)		Central Park Dental Group	no, NOT SVHC
New York	Schenectady (Eastern Only)		Braff Michael H DDS	no, NOT SVHC
New York	Schenectady (Eastern Only)		1st Advantage Dental	no, NOT SVHC
New York	Schenectady (Eastern Only)		Dr. Jennifer Wu, DDS	no, NOT SVHC
New York	Schenectady (Eastern Only)		Today's Dental Care	no, NOT SVHC
New York	Schenectady (Eastern Only)		Hoskinson Richard J DDS, Orthodontist	no, NOT SVHC
New York	Schenectady (Eastern Only)		Comis Michael J DDS	no, NOT SVHC
New York	Schenectady (Eastern Only)		Soule Scott S DDS	no, NOT SVHC
New York	Schenectady (Eastern Only)		Union Street Dental: Sementilli Amy M DDS	no, NOT SVHC
New York	Schenectady (Eastern Only)		Dr. Michael K. Deluke, DDS	no, NOT SVHC
New York	Schenectady (Eastern Only)		Central Park Dental Group: Gillenwalters David W DDS	no, NOT SVHC
New York	Schenectady (Eastern Only)		Dental Offices LLP: De Luke Robert K DDS	no, NOT SVHC
New York	Schenectady (Eastern Only)		Pfaffenbach Peter I DDS	no, NOT SVHC
New York	Schenectady (Eastern Only)		Molino Kent B DDS	no, NOT SVHC
New York	Schenectady (Eastern Only)		Dynamic Dental Services	no, NOT SVHC
New York	Schenectady (Eastern Only)		Star Dental	no, NOT SVHC
New York	Schenectady (Eastern Only)		Salvatore Jr Arthur C DDS	no, NOT SVHC
New York	Schenectady (Eastern Only)		Aspen Dental - Niskayuna	no, NOT SVHC
New York	Schenectady (Eastern Only)		Grosso Jeanne J DDS	no, NOT SVHC
New York	Schenectady (Eastern Only)		Rasmussen Paul T DDS	no, NOT SVHC
New York	Schenectady (Eastern Only)		Breault & Mc Govern: Mc Govern Michael DDS	no, NOT SVHC
New York	Schenectady (Eastern Only)		Dr. Thomas J. Merten, DDS	no, NOT SVHC
New York	Schenectady (Eastern Only)		Leitner Jeffrey M DDS	no, NOT SVHC
New York	Schenectady (Eastern Only)		Dr. Ronald E. Barber, DMD	no, NOT SVHC
New York	Schenectady (Eastern Only)		Perrino Michael A DDS	no, NOT SVHC
New York	Schenectady (Eastern Only)		Wilson & Buchakjian: Wilson Jeffrey J DDS	no, NOT SVHC
New York	Schenectady (Eastern Only)		Kraut Stuart M DDS	no, NOT SVHC
New York	Schenectady (Eastern Only)		Every Thomas DDS	no, NOT SVHC
New York	Schenectady (Eastern Only)		Abdullah Sinan DDS	no, NOT SVHC
New York	Schenectady (Eastern Only)		Chauvin James O DDS	no, NOT SVHC
New York	Schenectady (Eastern Only)		Ellis Health Center: Lanka John T DDS	no, NOT SVHC
New York	Schenectady (Eastern Only)		Allen Shawn	no, NOT SVHC
New York	Schenectady (Eastern Only)		DeLuke Orthodontics, PC	no, NOT SVHC
New York	Schenectady (Eastern Only)		Depalma Anthony J DDS	no, NOT SVHC
New York	Schenectady (Eastern Only)		Schummer John C DDS	no, NOT SVHC
New York	Schenectady (Eastern Only)		Dr David A ForemanDMD	no, NOT SVHC
New York	Schenectady (Eastern Only)		Blakeman Randolph F DDS	no, NOT SVHC
New York	Schenectady (Eastern Only)		David A. Stein D.D.S	no, NOT SVHC
New York	Schenectady (Eastern Only)		Dr. Collyer R. Matousek, DMD	no, NOT SVHC
New York	Schenectady (Eastern Only)		Sowalsky Robert D DDS	no, NOT SVHC
New York	Schenectady (Eastern Only)		Dr. Larry Rubin, DDS	no, NOT SVHC
New York	Schenectady (Eastern Only)		First Advantage Dental: Chan Ho K DDS	no, NOT SVHC
New York	Schenectady (Eastern Only)		Pomato Anthony D DDS	no, NOT SVHC
New York	Schenectady (Eastern Only)		Rose Carol	no, NOT SVHC
New York	Schenectady (Eastern Only)		Wall Street Dental: Makhijani Meena N DDS	no, NOT SVHC
New York	Schenectady (Eastern Only)		Cinelli Anthony A DDS	no, NOT SVHC
New York	Schenectady (Eastern Only)		Shah Rajnikant DDS	no, NOT SVHC
New York	Schenectady (Eastern Only)		Down William F DDS	no, NOT SVHC
New York	Schenectady (Eastern Only)		Ferraro Jr Anthony W DDS	no, NOT SVHC
New York	Schenectady (Eastern Only)		Liang Victor DDS	no, NOT SVHC
New York	Schenectady (Eastern Only)		Dr. William T. Tirone, DDS	no, NOT SVHC

State	County	Type	Institution Name	Affiliate of SVHC
New York	Schenectady (Eastern Only)	Behavioral Health Services	Ellis Hospital Department of Psychiatry	no, NOT SVHC
New York	Schenectady (Eastern Only)		Schenectady County Clinic Treatment Program	no, NOT SVHC
New York	Schenectady (Eastern Only)		Mohawk Opportunities ACT Program	no, NOT SVHC
New York	Schenectady (Eastern Only)		Ellis Child and Adolescent Treatment Services	no, NOT SVHC
New York	Schenectady (Eastern Only)		Northeast Parent & Child Society Clinic	no, NOT SVHC
New York	Schenectady (Eastern Only)		Ellis Mental Health Clinic	no, NOT SVHC
New York	Schenectady (Eastern Only)		Ellis Hospital PROS	no, NOT SVHC
New York	Schenectady (Eastern Only)		Rehabilitation Support Services, Inc. - Schenectady	no, NOT SVHC
New York	Schenectady (Eastern Only)		Family Support	no, NOT SVHC
New York	Schenectady (Eastern Only)		Schenectady County Office of Community Services Suicide Prevention	no, NOT SVHC
New York	Schenectady (Eastern Only)		Schenectady County Dept of Mental Health	no, NOT SVHC
New York	Schenectady (Eastern Only)	Visiting Nurses & Hospice Care	Joan Nicole Prince Home	
New York	Schenectady (Eastern Only)		Community Hospice, Inc.	
New York	Schenectady (Eastern Only)		Visiting Nurse Service of Schenectady and Saratoga	
New York	Schenectady (Eastern Only)	Long term Care & Subacute Care	Baptist Health Nursing and Rehabilitation Center, Inc	no, NOT SVHC
New York	Schenectady (Eastern Only)		Ellis Residential & Rehabilitation Center	no, NOT SVHC
New York	Schenectady (Eastern Only)		Glendale Home-Schdy Cnty Dept Social Services	no, NOT SVHC
New York	Schenectady (Eastern Only)		Kingsway Arms Nursing Center Inc	no, NOT SVHC
New York	Schenectady (Eastern Only)		Pathways Nursing and Rehabilitation Center	no, NOT SVHC
New York	Schenectady (Eastern Only)		The Avenue Nursing and Rehabilitation Centre	no, NOT SVHC
New York	Schenectady (Eastern Only)		The Dutch Manor Nursing and Rehabilitation Centre	no, NOT SVHC
New York	Schenectady (Eastern Only)	Physical Therapy & Rehabilitation	Denise A. Sands, PTA	no, NOT SVHC
New York	Schenectady (Eastern Only)		Fleming Physical Therapy Consultants	no, NOT SVHC
New York	Schenectady (Eastern Only)		Ellis Hospital Physical Therapy	no, NOT SVHC
New York	Schenectady (Eastern Only)		Sandra J Wells PC: Wells Sandra J	no, NOT SVHC
New York	Schenectady (Eastern Only)		Colleen A. Schmitt, PT	no, NOT SVHC
New York	Schenectady (Eastern Only)		Megan Sommo, PT	no, NOT SVHC
New York	Schenectady (Eastern Only)		Capital District Hand Therapy	no, NOT SVHC
New York	Schenectady (Eastern Only)		Physical Therapy Associates	no, NOT SVHC
New York	Schenectady (Eastern Only)		Child Program & Family Resources: Gangemi Marcia A	no, NOT SVHC
New York	Schenectady (Eastern Only)		Capital Living Rehabilitation	no, NOT SVHC
New York	Schenectady (Eastern Only)		Sheila J. McGlin, PT	no, NOT SVHC
New York	Schenectady (Eastern Only)		Jennifer Oliver, MS	no, NOT SVHC
New York	Schenectady (Eastern Only)		Karyn A. Amico-Dziezynski, PT	no, NOT SVHC
New York	Schenectady (Eastern Only)		Rose A. Szwedo, PT	no, NOT SVHC
New York	Schenectady (Eastern Only)		Carin E. Cappadocia, PT	no, NOT SVHC
New York	Schenectady (Eastern Only)		Kellie J. Fox, PT	no, NOT SVHC

Care Resources in Region				
State	County	Type	Institution Name	Affiliate of SVHC
New York	Warren (Southeastern only)	Hospital / Medical Center	Glens Falls Hospital	no, NOT SVHC
New York	Warren (Southeastern only)	Primary Care Physician Practice	Hudson Headwaters Health Network	no, NOT SVHC
New York	Warren (Southeastern only)		Convenient Medical Care PC	no, NOT SVHC
New York	Warren (Southeastern only)	Specialty Care Practice	Hudson Headwaters Health Network	no, NOT SVHC
New York	Warren (Southeastern only)		Adirondack Rehabilitation	no, NOT SVHC
New York	Warren (Southeastern only)		Glens Falls Obstetrics & Gyn: Guido Michael MD	no, NOT SVHC
New York	Warren (Southeastern only)		North Country Sleep Disorders	no, NOT SVHC
New York	Warren (Southeastern only)	Dentistry, Orthodontics, Oral Care	Aspen Dental	no, NOT SVHC
New York	Warren (Southeastern only)		Pediatrics Dentistry	no, NOT SVHC
New York	Warren (Southeastern only)		Gental Dental Care: Bohan B. Soifer, DDS	no, NOT SVHC
New York	Warren (Southeastern only)		Cottrell Dental: Eric K. Cottrell, DDS	no, NOT SVHC
New York	Warren (Southeastern only)		Dr. Stuart H. Wieder, DDS	no, NOT SVHC
New York	Warren (Southeastern only)		Adirondack Dental Implant Center	no, NOT SVHC
New York	Warren (Southeastern only)		Dean M Bartlett PC: Orthodontist	no, NOT SVHC
New York	Warren (Southeastern only)		Baybrook Dental Group	no, NOT SVHC
New York	Warren (Southeastern only)		Anthony J. Romanazzi, DDS	no, NOT SVHC
New York	Warren (Southeastern only)		David J Sherrick PC	no, NOT SVHC
New York	Warren (Southeastern only)		Huffaker S Kirk DMD, MDS	no, NOT SVHC
New York	Warren (Southeastern only)		Baim Loren C DDS	no, NOT SVHC
New York	Warren (Southeastern only)		Dr. John A. Milza Jr, DDS	no, NOT SVHC
New York	Warren (Southeastern only)		Jay K Wasserman DDS	no, NOT SVHC
New York	Warren (Southeastern only)		Adolph Valente DDS Dentist Office	no, NOT SVHC
New York	Warren (Southeastern only)		Kletter & Levine	no, NOT SVHC
New York	Warren (Southeastern only)	Behavioral Health Services	Behavioral Health Outpatient - Glens Falls Hospital	no, NOT SVHC
New York	Warren (Southeastern only)		Carol Goodsell Hobbs Lcsw	no, NOT SVHC
New York	Warren (Southeastern only)		Warren County Mental Health	no, NOT SVHC
New York	Warren (Southeastern only)		T. Beth Lamb, MN, ARNP, PMHNP-BC Nurse Practitioner Psychiatry	no, NOT SVHC
New York	Warren (Southeastern only)		Osika & Scarano Psychological: Scarano-Osika Gina PHD	no, NOT SVHC
New York	Warren (Southeastern only)		Mark Hamdi PhD	no, NOT SVHC
New York	Warren (Southeastern only)		Glens Falls Hospital Center for Recovery	no, NOT SVHC
New York	Warren (Southeastern only)		Samantha G. Sweet, PsyD	no, NOT SVHC
New York	Warren (Southeastern only)		Intensive Case Management Program	no, NOT SVHC
New York	Warren (Southeastern only)		Frank W. Isele, PhD	no, NOT SVHC
New York	Warren (Southeastern only)		Sanford Manor Psychology, P.C.	no, NOT SVHC
New York	Warren (Southeastern only)	Visiting Nurses & Hospice Care	High Peaks Hospice Inc	no, NOT SVHC
New York	Warren (Southeastern only)		Interim HealthCare	no, NOT SVHC
New York	Warren (Southeastern only)		House of Grace of The Adirondacks	no, NOT SVHC
New York	Warren (Southeastern only)		Visiting Nurses Home Care	no, NOT SVHC
New York	Warren (Southeastern only)	Long term Care & Subacute Care	Adirondack Tri-County Nursing and Rehabilitation Center, Inc	no, NOT SVHC
New York	Warren (Southeastern only)		The Pines at Glens Falls Center for Nursing & Rehabilitation	no, NOT SVHC
New York	Warren (Southeastern only)		The Stanton Nursing and Rehabilitation Centre	no, NOT SVHC
New York	Warren (Southeastern only)		Westmount Health Facility	no, NOT SVHC
New York	Warren (Southeastern only)	Physical Therapy & Rehabilitation	Orthopedic & Sports Rehab	no, NOT SVHC
New York	Warren (Southeastern only)		Adam M. Willis, PT	no, NOT SVHC
New York	Warren (Southeastern only)		Total Care & Rehab Medicine Pc: Michael Parisi DC	no, NOT SVHC
New York	Warren (Southeastern only)		Cynthia R. Perkins, PTA	no, NOT SVHC
New York	Warren (Southeastern only)		Lisa M. Cairnduff, PT	no, NOT SVHC
New York	Warren (Southeastern only)		Linda P Heinzelman Ptpc	no, NOT SVHC
New York	Warren (Southeastern only)		Orthopedic & Spine Physical	no, NOT SVHC
New York	Warren (Southeastern only)		Stephen W. Bassin, PT. PC:Physical Therapy & Rehabilitation	no, NOT SVHC
New York	Warren (Southeastern only)		Adirondack Rehabilitation Medicine	no, NOT SVHC
New York	Warren (Southeastern only)		Barbara W. Beaulac, PT	no, NOT SVHC
New York	Warren (Southeastern only)		Weston Paxxon Senior Rehab Services	no, NOT SVHC
New York	Warren (Southeastern only)		Catherine Reichen, PT	no, NOT SVHC
New York	Warren (Southeastern only)		Campopiano Physical Therapy	no, NOT SVHC
New York	Warren (Southeastern only)		Brenden J. Rillahan, PT	no, NOT SVHC

Care Resources in Region				
State	County	Type	Institution Name	Affiliate of SVHC
New York	Saratoga (Eastern only)	Hospital / Medical Center	Saratoga Hospital	no, NOT SVHC
New York	Saratoga (Eastern only)	Primary Care Physician Practice	Family Medicine of Mechanicville	no, NOT SVHC
New York	Saratoga (Eastern only)		Stillwater Family Health	no, NOT SVHC
New York	Saratoga (Eastern only)		Meliora Family Medicine, PLLC	no, NOT SVHC
New York	Saratoga (Eastern only)		Dr. Jessica A. Davis, MD	no, NOT SVHC
New York	Saratoga (Eastern only)		Schuylerville Family Health	no, NOT SVHC
New York	Saratoga (Eastern only)		Saratoga Care Family Health Centers	no, NOT SVHC
New York	Saratoga (Eastern only)		Community Care Family Medicine	no, NOT SVHC
New York	Saratoga (Eastern only)		Clifton Park Family Medicine	no, NOT SVHC
New York	Saratoga (Eastern only)		Saratoga Medical Associates (SMA)	no, NOT SVHC
New York	Saratoga (Eastern only)		Burnt Hills Pediatrics and Internal Medicine	no, NOT SVHC
New York	Saratoga (Eastern only)		Family Practice Ballston Spa	no, NOT SVHC
New York	Saratoga (Eastern only)	Specialty Care Practice	Saratoga Specialty Center	no, NOT SVHC
New York	Saratoga (Eastern only)		Community Care Pediatrics - Clifton Park	no, NOT SVHC
New York	Saratoga (Eastern only)		Community Care Pediatrics - Saratoga & Malta	no, NOT SVHC
New York	Saratoga (Eastern only)		Saratoga Gynecology Associates	no, NOT SVHC
New York	Saratoga (Eastern only)		OB/GYN Health Center Associates - Clifton Park	no, NOT SVHC
New York	Saratoga (Eastern only)		Pediatric Urgent Care	no, NOT SVHC
New York	Saratoga (Eastern only)		Urological Institute of Northeastern New York	no, NOT SVHC
New York	Saratoga (Eastern only)		ImageCare Saratoga	no, NOT SVHC
New York	Saratoga (Eastern only)		Old Saratoga Eyecare	no, NOT SVHC
New York	Saratoga (Eastern only)		Burnt Hills Pediatrics and Internal Medicine	no, NOT SVHC
New York	Saratoga (Eastern only)		Malta Foot Specialist: Joyce M. Senick, DPM	no, NOT SVHC
New York	Saratoga (Eastern only)	Dentistry, Orthodontics, Oral Care	A Beautiful Smile: Popielarski John N DDS	no, NOT SVHC
New York	Saratoga (Eastern only)		Jamie Green Dental	no, NOT SVHC
New York	Saratoga (Eastern only)		Smiles for Life Dental Care : Marc A. Johnson DDS	no, NOT SVHC
New York	Saratoga (Eastern only)		Spa Dental PC	no, NOT SVHC
New York	Saratoga (Eastern only)		Dr. Thomas J. Pray, DDS	no, NOT SVHC
New York	Saratoga (Eastern only)		Walton Craig F DDS	no, NOT SVHC
New York	Saratoga (Eastern only)		Artistic Gentle Dental Care	no, NOT SVHC
New York	Saratoga (Eastern only)		Rademacher Diane K DDS	no, NOT SVHC
New York	Saratoga (Eastern only)		Fred Dreher, DDS	no, NOT SVHC
New York	Saratoga (Eastern only)		Jan P. Fugal DDS	no, NOT SVHC
New York	Saratoga (Eastern only)		Mehdi Shazia DDS	no, NOT SVHC
New York	Saratoga (Eastern only)		Saratoga Smiles: Richard L Dennis DMD	no, NOT SVHC
New York	Saratoga (Eastern only)		Saratoga County Oral & Maxillofacial Surgery Associates	no, NOT SVHC
New York	Saratoga (Eastern only)		Glenn Park DDS PLLC	no, NOT SVHC
New York	Saratoga (Eastern only)		Harrison Wayne S DDS	no, NOT SVHC
New York	Saratoga (Eastern only)		Chauvin Family Dentistry	no, NOT SVHC
New York	Saratoga (Eastern only)		Dr. Gerald C. Benjamin, D.D.S. P.C.	no, NOT SVHC
New York	Saratoga (Eastern only)		Adirondack Dental Group PC	no, NOT SVHC
New York	Saratoga (Eastern only)		1st Advantage Dental	no, NOT SVHC
New York	Saratoga (Eastern only)		Gregory P. Dodd, DDS	no, NOT SVHC
New York	Saratoga (Eastern only)		Dr. Christian E. Mathiesen, DMD	no, NOT SVHC
New York	Saratoga (Eastern only)		Dr. William Y. Perez Jr, DDS	no, NOT SVHC
New York	Saratoga (Eastern only)		Dr. Troy W. Brooks, DMD	no, NOT SVHC
New York	Saratoga (Eastern only)	Behavioral Health Services	Bick Wanck & Associates	no, NOT SVHC
New York	Saratoga (Eastern only)		Transitional Service Association Inc	no, NOT SVHC
New York	Saratoga (Eastern only)		Psychological Services Pc	no, NOT SVHC
New York	Saratoga (Eastern only)		Saratoga Center For Social Therapy	no, NOT SVHC
New York	Saratoga (Eastern only)		Ecs Psychological Services PC	no, NOT SVHC
New York	Saratoga (Eastern only)		Saratoga Psychological Associates	no, NOT SVHC
New York	Saratoga (Eastern only)		New Horizons	no, NOT SVHC
New York	Saratoga (Eastern only)		Shannon Gould, PsyD	no, NOT SVHC
New York	Saratoga (Eastern only)		Wayne Michael PhD, L.Ac.	no, NOT SVHC
New York	Saratoga (Eastern only)		Candice J. Dunn, PsyD	no, NOT SVHC
New York	Saratoga (Eastern only)		Karen Byers, PsyD	no, NOT SVHC
New York	Saratoga (Eastern only)		Kimberly Marks, LCSW	no, NOT SVHC
New York	Saratoga (Eastern only)		Jana Miller, MS	no, NOT SVHC
New York	Saratoga (Eastern only)	Visiting Nurses & Hospice Care	Community Hospice	no, NOT SVHC
New York	Saratoga (Eastern only)		Visiting Nurses Association	no, NOT SVHC
New York	Saratoga (Eastern only)	Long term Care & Subacute Care	Saratoga Care Nursing Home	no, NOT SVHC
New York	Saratoga (Eastern only)		Saratoga County Maplewood Manor	no, NOT SVHC
New York	Saratoga (Eastern only)		Schuyler Ridge A Residential Health Care Facility	no, NOT SVHC
New York	Saratoga (Eastern only)		Wesley Health Care Center Inc	no, NOT SVHC
New York	Saratoga (Eastern only)	Physical Therapy & Rehabilitation	Community Care Physical Therapy - Clifton Park	no, NOT SVHC
New York	Saratoga (Eastern only)		Adirondack Rehabilitation Medicine	no, NOT SVHC
New York	Saratoga (Eastern only)		Saratoga Physical Therapy	no, NOT SVHC
New York	Saratoga (Eastern only)		Lamarco Physical Therapy PC	no, NOT SVHC
New York	Saratoga (Eastern only)		Minor Improvements Pt	no, NOT SVHC
New York	Saratoga (Eastern only)		Seton Health Physical Rehabilitation	no, NOT SVHC
New York	Saratoga (Eastern only)		Spa Physical Therapy	no, NOT SVHC
New York	Saratoga (Eastern only)		Clifton Park Physical Therapy	no, NOT SVHC
New York	Saratoga (Eastern only)		Maryellen Lee, RPT	no, NOT SVHC
New York	Saratoga (Eastern only)		Rae T. Rudat, PT	no, NOT SVHC
New York	Saratoga (Eastern only)		Wendy A. Maciariello, DPT	no, NOT SVHC
New York	Saratoga (Eastern only)		Unlimited Potential	no, NOT SVHC
New York	Saratoga (Eastern only)		Ann Simpson-Mcdowell, LCAT	no, NOT SVHC
New York	Saratoga (Eastern only)		Bree A. Pisacane, PT	no, NOT SVHC

Care Resources in Region				
State	County	Type	Institution Name	Affiliate of SVHC
Massachusetts	Berkshire (Northern only)	Hospital / Medical Center	North Adams Regional Hospital	no, NOT SVHC
Massachusetts	Berkshire (Northern only)		Berkshire Medical Center	no, NOT SVHC
Massachusetts	Berkshire (Northern only)	Primary Care Physician Practice	Williamstown Medical Associates	no, NOT SVHC
Massachusetts	Berkshire (Northern only)		Northern Berkshire Family Medicine	no, NOT SVHC
Massachusetts	Berkshire (Northern only)		Dr. Stephen L. Payne, MD	no, NOT SVHC
Massachusetts	Berkshire (Northern only)		Northern Berkshire Family Prtc: Kober William H MD	no, NOT SVHC
Massachusetts	Berkshire (Northern only)	Specialty Care Practice	Dermatology of the Berkshires: Cavalli Victoria R MD	no, NOT SVHC
Massachusetts	Berkshire (Northern only)		Skin Clinic: Elpern David MD	no, NOT SVHC
Massachusetts	Berkshire (Northern only)		Orthopedic Associates - Jonathan C Cluett, MD	no, NOT SVHC
Massachusetts	Berkshire (Northern only)		Northern Berkshire Pediatrics	no, NOT SVHC
Massachusetts	Berkshire (Northern only)		Northern Berkshire OB/GYN	no, NOT SVHC
Massachusetts	Berkshire (Northern only)		Northern Berkshire General Surgery	no, NOT SVHC
Massachusetts	Berkshire (Northern only)		Berkshire Hematology Oncology: Rosenthal Paul E MD	no, NOT SVHC
Massachusetts	Berkshire (Northern only)		Northern Berkshire Wound Healing Center	no, NOT SVHC
Massachusetts	Berkshire (Northern only)		Northern Berkshire Healthcare Medical Imaging	no, NOT SVHC
Massachusetts	Berkshire (Northern only)		The Joint Replacement Center of Northern Berkshire	no, NOT SVHC
Massachusetts	Berkshire (Northern only)		North Adams Regional Hospital Neurology and Stroke Center	no, NOT SVHC
Massachusetts	Berkshire (Northern only)	Dentistry, Orthodontics, Oral Care	Dr. George M. Klemm, DDS	no, NOT SVHC
Massachusetts	Berkshire (Northern only)		Leonard P Radin, DDS	no, NOT SVHC
Massachusetts	Berkshire (Northern only)		Messenger Digital Dentistry	no, NOT SVHC
Massachusetts	Berkshire (Northern only)		Ira S. Lapidus, DDS	no, NOT SVHC
Massachusetts	Berkshire (Northern only)		Oral Surgery Associates LLC	no, NOT SVHC
Massachusetts	Berkshire (Northern only)		Donald Mead, DDS	no, NOT SVHC
Massachusetts	Berkshire (Northern only)		John Stewart, DMD Oral Surgery	no, NOT SVHC
Massachusetts	Berkshire (Northern only)		Ralph V. Blanchard Jr., DDS PC	no, NOT SVHC
Massachusetts	Berkshire (Northern only)	Behavioral Health Services	Psychiatric Services/Greylock Pavilion	no, NOT SVHC
Massachusetts	Berkshire (Northern only)		Howland Psychiatry & Associates - Clinical Social Work/Therapist	no, NOT SVHC
Massachusetts	Berkshire (Northern only)		Thomas R Plunkett - Clinical Social Work/Therapist, MSW, LICSW	no, NOT SVHC
Massachusetts	Berkshire (Northern only)		Lisa J Carton - Clinical Social Work/Therapist, LICSW	no, NOT SVHC
Massachusetts	Berkshire (Northern only)		Vitality Physicians Group Practice PC, Treatment Facility	no, NOT SVHC
Massachusetts	Berkshire (Northern only)		Thelma A Costello - Counselor, MS, LMHC, PC	no, NOT SVHC
Massachusetts	Berkshire (Northern only)		Counseling Center Northern Berkshire County	no, NOT SVHC
Massachusetts	Berkshire (Northern only)		Siracusa Associates Behavioral Health	no, NOT SVHC
Massachusetts	Berkshire (Northern only)	Visiting Nurses & Hospice Care	Visiting Nurse Association & Hospice of Northern Berkshire (VNA & Hospice)	no, NOT SVHC
Massachusetts	Berkshire (Northern only)		Hospice Services of Western Ma	no, NOT SVHC
Massachusetts	Berkshire (Northern only)		HospiceCare in the Berkshires	no, NOT SVHC
Massachusetts	Berkshire (Northern only)	Long term Care & Subacute Care	North Adams Commons Nursing & Rehabilitation Center	no, NOT SVHC
Massachusetts	Berkshire (Northern only)		Mt. Greylock Extended Care Facility	no, NOT SVHC
Massachusetts	Berkshire (Northern only)		Hillcrest Commons Nursing & Rehabilitation Center	no, NOT SVHC
Massachusetts	Berkshire (Northern only)		Sugar Hill Senior Living	no, NOT SVHC
Massachusetts	Berkshire (Northern only)		Sweet Brook Care Center, Inc.	no, NOT SVHC
Massachusetts	Berkshire (Northern only)		Williamstown Commons Nursing & Rehabilitation Center	no, NOT SVHC
Massachusetts	Berkshire (Northern only)		Craneville Place of Dalton	
Massachusetts	Berkshire (Northern only)	Physical Therapy & Rehabilitation	Robin N. Whitney, PT	no, NOT SVHC
Massachusetts	Berkshire (Northern only)		Wendy E. Warner, PTA	no, NOT SVHC
Massachusetts	Berkshire (Northern only)		North Adams Regional Hospital Rehabilitation Services	no, NOT SVHC
Massachusetts	Berkshire (Northern only)		Adams Physical Therapy, LLC	no, NOT SVHC
Massachusetts	Berkshire (Northern only)		Williamstown Physical Therapy	no, NOT SVHC
Massachusetts	Berkshire (Northern only)		Greylock Physical Therapy	no, NOT SVHC
Massachusetts	Berkshire (Northern only)		Peter L. Hoyt, ATC	no, NOT SVHC
Massachusetts	Berkshire (Northern only)		Nancy Bullett Physical Therapy	no, NOT SVHC
Massachusetts	Berkshire (Northern only)		Shelby L. Zawistowski, PTA	no, NOT SVHC

Appendix C. Health Indicator Table for Service Area:

Data sources for quantitative health data:

- Behavioral Risk Factor Surveillance Survey (BRFSS)
- Youth Risk Behavioral Survey (YRBS)
- 2010 Census Records
- Community Commons
- County Health Rankings
- State Health Department Reports

	Vermont	Bennington County (VT)	Windham County (VT)	New York	Rensselaer County (NY)	Washington County (NY)	Massachusetts	Berkshire County (MA)	Nation
Social/Economic Factors									
% of Population at 100% of Federal Poverty Level (FPL)	11.55%	13.26%	10.47%	14.90%	11.81%	12.66%	11.03%	12.39%	14.88%
% of Population at 200% of FPL	28.76%	32.91%	31.34%	31.61%	26.04%	32.62%	24.20%	30.19%	33.56%
Access to Health Services									
% of adults with Usual Primary Care Provider	88%	90%	88%	83%	90%	76%	88%	89%	78%
Number of Primary Care Physicians/100,000 people	122.6	110.9	126.51	109.58	63.99	36.41	124.19	137.21	85.83
Ratio of Mental Health Providers to Population	329:1	276:1	216:1	510:1	981:1	1165:1	248:1	182:1	521:1 (90th percentile)
% of adults who are Uninsured	9.44%	10.40%	10%	16%	11.10%	13.70%	5.57%	5.30%	20.76%
% of children who are Uninsured	3.24%	3.70%	3.40%	4.18%	3.60%	4.50%	1.35%	2%	7.54%

	Vermont	Bennington County (VT)	Windham County (VT)	New York	Rensselaer County (NY)	Washington County (NY)	Massachusetts	Berkshire County (MA)	Nation
% of adults with 6 or more permanent teeth removed	15.85%	17.87%	17.23%	15.73%	18.23%	28.34%	14.01%	18.73%	15.65%
Health Behaviors									
Substance Use									
% of adults who smoke	17.00%	27.00%	15.00%	17.00%	18.60%	23.50%	15.00%	17.20%	19.00%
% of adults who attempted to quit smoking in past year	62.00%	54.00%	64.00%	65.20%	70.78%	75.98%	60.34%	61.86%	59.00%
% of adults that had 5 (men) or 4 (women) or more drinks on an occasion in the past 30 days (Binge Drinking Rate)	19.00%	15.00%	18.00%	18.10%	18.70%	21.10%	17.60%	18.20%	17.00%
% of students who smoked cigarettes in the past 30 days	13.00%	10.00%	17.00%	10.60%	Not Available	Not Available	21.00%	12.30%	15.70%
% of students who attempted to quit smoking in the past year	44.00%	54.00%	50.00%	45.10%	Not Available	Not Available	Not Available	Not Available	48.00%
% of students who had five or more drinks of alcohol within a couple of hours in the past 30 days (Binge Drinking Rate)	19.00%	17.00%	23.00%	18.40%	Not Available	Not Available	19.00%	18.00%	20.80%
Weight, Physical Activity									
% of adults that are overweight or obese	60.00%	60.00%	53.00%	59.30%	60.50%	67.80%	59.78%	58.15%	64.00%

	Vermont	Bennington County (VT)	Windham County (VT)	New York	Rensselaer County (NY)	Washington County (NY)	Massachusetts	Berkshire County (MA)	Nation
% of adults that are overweight	37.00%	35.00%	32.00%	36.20%	34.40%	38.50%	36.24%	36.75%	36.00%
% of adults that are obese	23.00%	25.00%	21.00%	23.10%	26.10%	29.30%	23.54%	21.40%	28.00%
% Adults that reported no physical activity in leisure time in past month	18.75%	20.30%	17.70%	23.85%	22.30%	27.10%	21.98%	19.60%	23.41%
% of youth that are overweight or obese	29.00%	31.00%	31.00%	24.37%	32.10%	32.20%	23.06%	Not Available	30.30%
% of youth that are overweight	16.00%	16.00%	16.00%	13.79%	14.80%	11.80%	12.89%	Not Available	16.60%
% of youth that are obese	13.00%	15.00%	15.00%	10.58%	17.30%	20.40%	10.17%	Not Available	13.70%
% of students that met physical activity guidelines	25.00%	32.00%	26.00%	25.73%	Not Available	Not Available	22.99%	Not Available	27.10%
% of adults with 5+ fruit and vegetable servings per day	23.00%	26.00%	28.00%	26.80%	30.90%	Not Available	27.50%	27.40%	23.50%
% of population living in a food desert	12.77%	7.98%	17.08%	13.04%	27.17%	12.38%	30.48%	30.34%	23.61%
Preventative Measures									
% of adults with a routine doctor visit in past year	67.00%	70.00%	66.00%	74.80%			76.70%	76.10%	68.20%
% of adults that have visited the dentist in past year	74.84%	72.22%	73.44%	72.82%	69.36%	70.17%	79.71%	76.9%*	69.85%
% of adults screened for cholesterol level	75.00%	74.00%	73.00%	77.30%	87.10%	70.10%	84.30%	85.40%	76.40%

	Vermont	Bennington County (VT)	Windham County (VT)	New York	Rensselaer County (NY)	Washington County (NY)	Massachusetts	Berkshire County (MA)	Nation
% of Women 40+* who have had Mammogram in past 2 years *Ages 50-74 in VT	82.00%	81.00%	82.00%	79.7% (Ages 40+)	80.20%	76.30%	85.5% (40+)	85.4% (40+)	79.00%
% of women 21+ who have had pap smear in past 3 years	78.48%	79.60%	76.60%	92.10%	95.60%	97.50%	84.50%	83.30%	81.10%
% of adults 50+ that have ever had a sigmoidoscopy/ colonoscopy	71.00%	72.00%	61.00%	66.60%	67.60%	68.90%	63.50%	65.30%	65.00%
Maternal and Child Health									
Rate of infant mortality/1,000 births	5.1	8.7	5	5.4	5.2	7.3	4.9	3.7	6.52
Rate of births that occurred in women aged 15-19/1,000 births	18.5	26.6	22.9	23.7	25.7	31.1	18.3	21.8	36.6
% of women who smoked before pregnancy	21.10%	35.60%	29.80%	Not Available	Not Available	Not Available	Not Available	Not Available	Not Available
% of women who quit smoking during pregnancy	21.70%	31.40%	28.40%	10.60%	Not Available	Not Available	6.70%	Not Available	Not Available
Breastfeeding initiation rate in hospitals	82.10%	Not Available	Not Available	77.80%	66.90%	68.70%	Not Available	Not Available	Not Available
% of women that received adequate pre- natal care	87.60%	84.00%	86.80%	65.90%	70.20%	57.80%	84.90%	75.00%	74.40%
% of women that received pre-natal care in the first trimester	84.00%	80.00%	84.00%	72.40%	75.50%	61.40%	83.90%	83.10%	83.70%

	Vermont	Bennington County (VT)	Windham County (VT)	New York	Rensselaer County (NY)	Washington County (NY)	Massachusetts	Berkshire County (MA)	Nation
Health Status									
Chronic Diseases									
% of adults with heart disease	4.20%	4.62%	5.14%	4.30%	11.99%	5.00%	3.86%	3.97%	4.40%
% of adults with cardiovascular disease (heart/stroke)	8.00%	8.00%	8.00%	7.60%	8.90%	9.10%	7.70%	7.70%	9.00%
Heart disease mortality/100,000	157.9	152.83	154.04	212.37	225.83	173.79	155.93	156.56	184.55
Stroke mortality/100,000	34.03	38.86	35.22	27.89	33.99	34.44	33.12	34.79	40.39
% of adults with asthma	15.44%	21.33%	15.14%	14.32%	9.11%	16.51%	15.42%	16.70%	13.36%
% of adults with diabetes	6.42%	6.50%	6.00%	8.66%	9.10%	8.80%	8.17%	7.00%	8.95%
% of adults with hypertension (ever diagnosed)	30.00%	34.00%	26.00%	25.70%	27.40%	29.50%	25.00%	26.50%	31.40%
% of adults with high cholesterol (ever diagnosed)	36.02%	39.23%	37.63%	38.69%	53.77%	48.61%	34.35%	30.63%	38.52%
% of adults with arthritis	27.00%	31.00%	29.00%	27.70%	31.00%	35.00%	26.20%	31.90%	26.00%
Cancers									
Incidence of breast cancer/100,000	129.1	119.7	131.8	128.5	126.5	122	134.2	118	121.9
Incidence of lung cancer/100,000	69.5	74.2	60.1	63.7	87.8	93.6	69.7	72.9	61
Incidence of cervical cancer/1,00,000	4.3			8.1	6.3	13.1	5.5	6.3	7.8
Incidence of colon & rectum cancer (colorectal)/100,000	39.8	41.1	40.3	44.9	47.5	39.7	42	47.2	39.9

	Vermont	Bennington County (VT)	Windham County (VT)	New York	Rensselaer County (NY)	Washington County (NY)	Massachusetts	Berkshire County (MA)	Nation
Incidence of prostate cancer /100,000	133.4	140.9	112.4	163.3	154.5	151.6	148.9	154	128.2
Infectious Diseases									
HIV Prevalence/100,000	81.72	63.5	103.7	810.01	180	325.2	314.64	101.8	340.37
Chlamydia Rate/100,000	275.21	284	223.6	516.54	311.8	239.1	357.49	258.3	456.7
Mental Health									
% of adults that have ever been told they have a depressive disorder	22.00%	27.00%	22.00%	16.10%	Not Available	Not Available	19.70%	Not Available	17.00%
% of adults that report poor mental health for 14 of the past 30 days	12.00%	15.00%	10.00%	10.20%	9.20%	10.90%	9.10%	9.20%	12.00%
% of students felt sad/hopeless almost every day for 2+ weeks in a row	21.00%	22.00%	27.00%	23.76%	Not Available	Not Available	22.00%	Not Available	29.90%
% of students who report making a plan about how they would attempt suicide or attempting suicide in the past 12 months	11.00%	11.00%	15.00%	Not Available	Not Available	Not Available	11.00%	5.20%	13.60%

Appendix D. Focus Group Results:

Participant Roster

These members represent the broad interests of the community served by SVHC and included members from state and local public health departments, schools, faith groups, community coalitions and economic development agencies. These members represent all community members including the medically underserved, low-income and minority populations across our region.

Hoosick Falls (February 4, 2015)

1. Aelish Nealon- Executive Director, HAYC3
2. David Borge- Mayor, Village of Hoosick Falls
3. Gill Hall- Manager, Town of Hoosick Rescue Squad
4. Jim Martinez- President, Hoosick Federal Credit Union
5. Jim Monahan- Pharmacist, Thorpes Pharmacy
6. Amanda Haar- Volunteer, HAYC3
7. Lisa Bundrick- School Social Worker, Hoosick Falls Elementary School
8. Laura Reynolds- Administrator, The Center for Nursing & Rehabilitation at Hoosick Falls
9. Terry Yavaniski- Community Member
10. Rebecca Hewson-Steller- Community Member

Manchester (February 12, 2015)

1. Mildred Dunn- Clinical Supervisor, Manchester Health/Rutland VNA and Hospice
2. Peg Gregory- Director of Outpatient Services, United Counseling Service
3. Victoria Silsby- Tobacco Coordinator, The Collaborative
4. Betsy Bleakie- Executive Director, Manchester Community Library
5. Mark Tashjian- Headmaster, Burr and Burton Academy
6. Pauline Moore- Assessor and Economic Development Coordinator, Town of Manchester
7. Fran Bisselle- Head of School, Maple Street School
8. Joe Miles- President, r.k. Miles, Inc.
9. John O'Keefe- Town Manager, Town of Manchester
10. Jane Gras- Curriculum Coordinator, Northshire Day School
11. Cristina Maddocks- Executive Director, Northshire Day School

Williamstown (February 13, 2015)

1. Kris Maloney- Benefits Coordinator, Williams College
2. Shawn Godfrey- General Manager, Village Ambulance

3. Van Ellet- Chair, Williamstown Affordable Housing Committee
4. Win Stuebner- Hospice Director, Berkshire VNA and Hospice
5. Brian O'Grady- Director, Council on Aging
6. Sandra Thomas- Interim Director, Williamstown Chamber of Commerce

Bennington (March 9, 2015)

1. Alice Hadley- VNA and Hospice of Southwestern Vermont
2. Mary Botter- Division of Nursing Chair, Southern Vermont College
3. Charlie Gingo- Community Member
4. Tim Payne- Principal, Mount Anthony Union Middle School
5. Denise Main- Family Services Director, Sunrise Family Resource Center
6. Cindy Krautheim- Volunteer, Alliance for Community Transformations & Bennington Free Clinic
7. Sue Andrews- Executive Director, Greater Bennington Interfaith Community Services
8. Patricia P. Johnson- Mount Anthony Union Middle School
9. Judith Fellows-Miller- Prevention Coordinator, Vermont Department of Health
10. Jeannie Jenkins- Coordinator of Academic Services, Community College of Vermont
11. Robin Stromgren- Intake Coordinator, Building Bright Futures
12. Pam Brownell-Gulley- School Nurse, The Village School of North Bennington
13. Amelia Silver- Development Director, Sunrise Family Resource Center
14. David Rees- Senior Vice-President for Strategic Initiatives, Bennington College
15. Michele Johnson- Human Resources and Contracts Administrator, Town of Bennington
16. Betsy Rathbun-Gunn- United Counseling Service
17. Susan Fox- Executive Director, Meals on Wheels of Bennington County
18. Jim Sullivan- Director, Bennington County Regional Commission
19. Michelanne Sylvester- Economic Services
20. Forest Weyen- Executive Director, Bennington Rescue Squad
21. Chris Bongartz- District Director, Vermont Department of Health

Cambridge (March 18, 2015)

1. Carman Bogle- Town Trustee, Village of Cambridge
2. Rev. Kate Kotfila- Pastor, Cambridge United Presbyterian
3. Kathy Jo McIntyre- Deputy Director, Washington County Public Health
4. Bill Figlozzi- Chair, Mary McClellan Foundation Board of Directors
5. Paul Baker-Porazinski- President, Cambridge Central School Board of Education
6. Bliss McIntosh- Director, Cambridge Community Garden and Instructor, Hubbard Hall
7. Kathleen Lacasse- Member, Mary McClellan Foundation Board of Directors
8. Mark Spezio- Captain, Cambridge Valley Rescue

9. Cindy Maguire- Director, Cambridge Public Library
10. David Snider- Executive Director, Hubbard Hall

Wilmington (April 2, 2015)

1. Jennifer Fitzgerald- Town Nurse, Town of Wilmington
2. Bette Crawford- Community Member
3. Craig Ohlson- Health Officer, Town of Wilmington
4. Claire Watkin- Physical Therapist, PT Plus
5. Seth Boyd- Community Member
6. Cindy Hayford- Coordinator, Deerfield Valley Community Partnership
7. Carol Herbert- Member, Aging in Place
8. Bill Herbert- Member, Aging in Place
9. Heidi Taylor- Business Administrator, Deerfield Valley Rescue

Public Forum (April 9, 2015)

1. Mary Gerisch- Bennington Homeless Coalition and Vermont Workers Center
2. Peter Bulterman- Turning Point
3. Carol Windover- Branch Manager, Keene Medical Projects
4. Dick Bower- Volunteer, Bennington Free Clinic
5. Grace Winslow- United Counseling Services, Head Start, and Oral Health Coalition
6. Rick Ogilvie- Chief Information Officer, Southwestern Vermont Health Care
7. Randy Arselmo- Physician, Bennington College
8. Ashley Jowett- Communications, Southwestern Vermont Health Care
9. Katie Emerson- AmeriCorps VISTA, Alliance for Community Transformations
10. Liz Thompson- AmeriCorps VISTA, Bennington County Regional Commission
11. Sarah Valentine-Maher- Community Member (Cambridge, NY)
12. Abby Maher- Youth Community Member (Cambridge, NY)

Appendix E. Minutes from Focus Group Sessions

Hoosick Falls Focus Group

February 4, 2015 – 7:30 A.M.

Health Issues Across the Community:

- Shortage of primary care doctors and difficulty working across state lines
- Need certain specialists at SVMC (endocrinologist)
- Lack of access to social services
- Lack of communication between hospital and community
- Lack of transportation to hospital- need ambulette

Health Issues among Children and Young Adults:

- Lack of literacy at young age (affects rest of person's life)
- High levels of stress
- Lack of access to mental health crisis services

An over-arching theme was the need to improve communication between the hospital and the Hoosick Falls Community. To this end, we will establish a recurring meeting between representatives of SVMC and Hoosick Falls to address specific issues, such as student stress and transportation. To better engage with the community, the hospital could become more involved in town-wide events such as Community Clean Up Day on May 2nd. The stress management/meditation program could also serve as a platform to introduce other educational programs into the community.

Other goals included building connections between groups that offer needed services (transportation, youth outreach programs), working with the county to expand mental health services, and having social workers available in the ER to connect people to social services.

Manchester Focus Group

February 12, 2015 – 7:30 A.M.

Top Health Needs:

Pre-K and Parents

- Mental Health of family- Stigma surrounding mental health is breaking and a conversation is starting, but is still an issue throughout the community
- Support for parents and families- Classes/manual on juggling new world, support for non-working parents, developing a work/life balance

Children and Youth (6-12 years old)

- Nutrition and health education- Have different definitions for "fitness"
- Substance Abuse Prevention- Need to start young
- Mentoring for positive social behavior- Latchkey kids, surveying kids to know them and guide them
 - Ties into mental health
 - Trauma or poor parental guidance can cause mental health issues to continue throughout generations
 - Mentors provide alternative role models

Teens (13-20 years old)

- Smoking (tobacco and marijuana), drinking, drugs- prevention, treatment, and recovery

- Use may be connected to stress
- Need to start emotional development/coping skills early in education so they can transition out of home into college/work
- Mindfulness and meditation- Program at library and in schools
- Physical Activity- connects with health education

Adults (21-34 years old)

- Access to good paying jobs
 - Need reliable transportation
 - No longer have guaranteed support from school, have to make their own way and build connections- what happens now affects the rest of their life
 - Cycle where young adults leave this area because of lack of jobs and affordable housing; because this age group isn't here we don't have programs supporting what they need
 - Second Shift workers miss many of the young adult activities that do exist
- Mental Health
- Early childhood care/ parenting

Mature Adults (35-64 years old)

- Access to dental/primary care/OBGYN/wellness programs/psychiatric care
 - Dentists won't take insurance (have to get reimbursed)
 - Need to recruit these providers
 - Many small private dental practices causing an inefficiency in system
- Mental health stigma, access to support

Seniors (65+ years old)

- Transportation- Not just to medical appointments
 - Red Cross provides transportation to medical appointments- can be hard to coordinate and people often end up being late to appointments or waiting for hours afterward
 - Only North/South transportation
 - The transportation we do have is 2/3rd empty
 - Medicaid and Medicare provide transportation vouchers and VA transports Veterans; leaves out a large portion of the lower middle class
- End of life matters
 - SVMC has some caseworkers but need more people to help families
 - Need help to honor senior's wishes and help family understand choices
- Low middle class issues

Williamstown Focus Group

February 13, 2015 – 7:30 A.M.

Top Health Needs:

Pre-K and Parents

- Support groups, especially for single parents
- Child care and overall child development programs

Children and Youth (6-12 years old)

- Healthy Habits/Inactivity- Work with school lunch programs
- Improve importance of family dynamic and provide support for families

Teens (13-20 years old)

- Smoking, Drugs, and Alcohol Programs
- Community outreach and collaboration with local agencies

Adults (21-34 years old)

- Access to information about health care
- Mental Health
- Community outreach and collaboration with local agencies

Mature Adults (35-64 years old)

- Access to care- doctors, points of entry
- Wellness Prevention Programs- Individual/group (medical home); nutritional counseling, activity
- Community Outreach: Collaborate with existing programs in Northern Berkshire; prescription drugs outreach

Seniors (65+ years old)

- Wellness/Prevention Programs- Disease prevention, exercise programs
- Transportation

Bennington Focus Group

March 9, 2015 – 5:00 P.M.

Top Health Needs:

Pre K/ Parents

- Access to Care: Mental Health, Nutritional Health, Dental Health
 - ACES (Adverse Childhood Experiences)- Abuse/Negligence, divorce, incarceration, loss of housing etc
 - Immunization – for children (Philosophical exemptions)
 - Over prescription of medication and lack of follow up
 - Substance abuse treatment
- Sustained Education
 - Sustained parenting education on oral health, nutrition, literacy
 - Access to quality early education- infant toddler care

Children and Youth (6-12 years old)

- Role Models
 - Lack of structure / adult supervision
 - Lack of role models – Many parents are unemployed/ underemployed/ unstable
- Education (nutrition, reproductive health, general wellbeing)
 - Access to dental care/ health and hygiene education
 - Increased risks due to access at home to alcohol, drugs, tobacco
 - Family/community supports for learning and goals for education
 - Reproductive health education
- Access to Quality Nutrition

Teens (13-20 years old)

- Access to reliable reproductive health education and services
 - Sex education, contraception, access to local abortions
 - Teen pregnancy and parenting
- Lack of role models/ mentors- Developing healthy and respectful relationships

Adults (21-34 years old)

- Economics
 - Jobs- Training and education
 - Affordable transportation
 - Affordable childcare
 - Lack of cultural values around post-secondary education
- Access to and knowledge about affordable care
 - Preventative care
 - Perinatal services- Unplanned pregnancies, abortion services
 - Physicians and dentists
 - Mental Health
 - Insurance education

Mature Adults (35-64 years old)

- Access to Health Care (primary, dental, mental)
 - Lack of specialized medical care
 - Medications – Overuse, access to and knowledge of medications
 - Chronic disease
 - Dental education
 - Finding counselors/psychiatrists for mental health (Depression, anxiety)
 - Cost of care
 - Rural Health Care
 - Insurance Awareness- Education and Training
 - Stress (the age of stress)
- Effects of Poverty
 - Safe and affordable housing
 - Transportation

Seniors (65+ years old)

- Access and Info/Navigation and appropriate use of services
 - Overuse of ER and Rescue Squad
 - Access to dental care
 - Cost of “life line”
 - Longer life span = greater needs
 - Understanding of medicare/health care (economics)- need to help to get right insurance policies and use them correctly
 - Rural Health Care
 - Quality and affordable assistive living/caregivers/in-home care Healthcare proxies/legal advisors
 - Increase lung screenings by physicians
 - Healthcare providers that support death with dignity
 - Access to meds and/or lots of different meds
- Hunger/Nutrition
 - Access and cost an issue
 - Lack of understanding link between good health and nutrition

Cambridge Focus Group

March 18, 2015 – 5:00 P.M.

Pre-K and Parents

- Instruction and access to a healthy diet, establishing healthy habits
- Healthcare parenting classes
- Unstructured community interactions and activities, especially in winter

Children and Youth (6-12 years old)

- Obesity from poor nutrition and sedentary lifestyle
- Crisis counseling and mental health support for child and parents

Teens (13-20 years old)

- Healthy extracurricular activities during vacations/weekends
- Mental health services

Adults (21-34 years old)

- Mental health services
- Parenting skills education

Mature Adults (35-64 years old)

- Access to primary care
- Mental health services

Seniors (65+ years old)

- Support for aging at home (companion care/visiting nurse)
- Lack of public transportation

Wilmington Focus Group

April 2, 2015 – 5:00 P.M.

Top Health Needs:

Pre-K and Parents

- Lack of quality day care (No openings, not enough that take babies)
- Need local Pediatrician
 - Lack of MD experience for children, currently only one on call
 - Increase access to primary care in general

Children and Youth (6-12 years old)

- Mentors from High School
 - Adult mentors for high school students, those students mentor elementary school students (trickle down)
- Increase physical activity/space for outdoor activities (ski schools, nature walks)

Teens (13-20 years old)

- High school students disconnected from community
 - High school too far away from town and other schools
 - Need community center and/or teen center with activities for teens
- Depression
 - Lack of support/licensed counseling services
 - Lack of licensed drug and alcohol counselors in area
 - High marijuana and alcohol use
 - Parents with substance abuse issues

Adults (21-34 years old)

- Lack of urgent care/walk in/weekend care

- Need 24/7 urgent care center and paramedical available
- Parenting/Life counseling for single parents

Mature Adults (35-64 years old)

- Substance abuse- depression and mental health support
- Economic development- more job opportunities with good wages

Seniors (65+ years old)

- Support for seniors living at home
- Senior socialization opportunities/senior center

Bennington Public Forum

April 9, 2015 – 6:00 P.M.

Priority Health Areas Identified:

Access to Primary Care and Dental Care

- Limited access to dentists
 - Most don't take Medicaid and Medicare doesn't provide enough coverage
 - Many dentists starting to retire
 - Many people have to travel to Rutland/Arlington- transportation an issue
- Need to attract more providers to area
- Initiatives to increase access include:
 - Increased recruiting for nurse practitioners and Physician Assistants
 - Telemedicine with Dartmouth
 - Increase capacity for express care

Mental and Behavioral Health

- Not enough providers- they are doing the best they can but it isn't enough
 - Provider Burnout an issue- need support
- Connection between homelessness and untreated mental health issues
 - Loss of employment due to unresolved mental health problems
 - Mentally ill people who are also parents- hard to care for their children
 - A lot of support available for recent parolees, but that same support isn't there for people who have lost their homes
 - Some people unwilling to ask for help / don't see themselves as homeless
 - Young parents (16+) and their children are homeless

Reproductive Health Education and Access to Birth Control

- Many teenage parents with 3+ children
- Lack of access to birth control
 - Many people don't have primary care provider
 - Planned Parenthood is hard to find, has limited hours
- Lack of reproductive health education in schools

Transportation

- Green Mountain Express used to provide transportation to appointments
- Not everyone covered- Medicaid provides transportation; Medicare does not
- Cambridge, NY- Very big problem, no bus service at all
- Pownal- Lack of access to sidewalks, health center, food, transportation, gym

Wellness Programs

- Smoking Cessation
 - 1-800-QUIT NOW very good resource
 - Program at SVHC needs better follow through, peer support, more classes (improve advertising to increase access and scale)
 - Need tobacco cessation programs for youth (as well as prevention)
 - Prenatal smoking huge issue- coordinate with all perinatal providers/organizations to encourage quitting
- Blueprint
 - Many don't know if their provider is a Blueprint provider or what services they offer through Blueprint
 - Lack of follow up, often have to make separate appointment for Blueprint services
 - Lack of primary care access limits effectiveness of Blueprint
- Healthy Eating
 - Encourage healthy foods in Dollar Stores, food pantries
 - Legislation/policy to require it as part of certification
 - Connect local food growers (community gardens, etc) to stores and food shelves- Cambridge Community Gardens is good example
- Physical Activity Programs
 - Need free, fun exercise programs and places to exercise
 - Open gym/room for play a few times a week
 - Activities for children who don't play sports
 - Most of community unable to walk to Willow Park
 - Need to increase walkability of town
 - Redevelop empty lots in green space
- Market as patient working together with provider to generate interest
 - Educate community on options through Cat-TV, etc.
 - Real people available to talk to
- Programs in Schools
 - Mentorship program – Leverage high school and college students
 - Cooking classes – Partner with high school has a culinary program

Appendix F. SVHC Internal Review Recommendations:

Nurse Practice Council

March 18, 2015 – 9:30 A.M.

- Improve offerings in:
 - Elder care
 - Behavioral health
 - Substance abuse treatment
 - Primary care
 - Specialty care (neurology, pain management, gastroenterology, orthopedics)
 - Dental and oral care services
- Increase patient compliance
- Encourage healthy behaviors (healthy eating, stop smoking)
- Reduce obesity and teen pregnancy rates
- Increase communication between health systems

Appendix G. SVHC's Practice Management Team

May 6, 2015 – 10:00 A.M.

Priority Health Needs:

- Increase services and improve offerings in:
 - Dental care
 - Assistance for elderly
 - General access to care
 - Mental and behavioral health services
 - Addiction treatment
 - Primary care access
 - Home health care
 - Orthopedic access (high demand for hip replacements)
- Increase jobs and develop more robust economy
- Improve clinic efficiency
- Improve options for low-income people
- More screening programs
- Address lack of transportation
- Improve health behaviors:
 - Substance abuse and smoking prevention
 - Lower obesity rates
 - Increase patient education on health behaviors
 - Diabetes and other chronic disease management
 - Medication management
 - Youth health

Solutions to Address Needs:

- Economic Stimulus
 - Lower property taxes to bring in jobs
 - Improve financial literacy
- Increase availability of and access to care
 - Home services
 - Elder services
 - Dental services
 - Affordable care and medication
 - Increase insurance coverage
- Community Resource Center- YMCA, Boys and Girls Club
- Improve education of children and youth
- Improve transportation system

Appendix H. Community Health Needs in Specific Service Areas

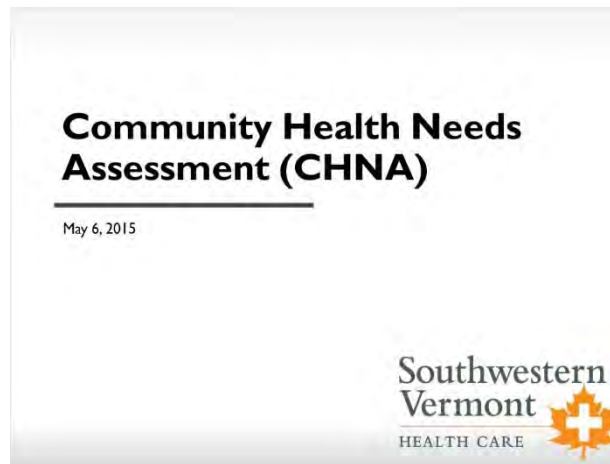
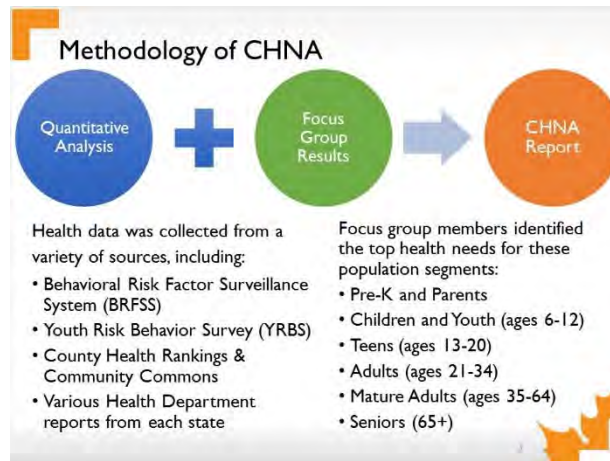


Table of Contents

- Methodology for CHNA.....3
- Priority Health Needs.....4
- Health Needs of Full Service Area.....5
- Health Needs of Service Regions.....7
 - Bennington County.....7
 - Windham County.....12
 - Rensselaer County.....15
 - Washington County.....18
 - Berkshire County.....21



Health Concerns across SVHC's Service Region

- Access to Care**
 - 1 in 7 adults do not have a primary care provider
 - 1 in 5 adults have had 6 or more teeth removed
- Obesity and Healthy Behaviors**
 - More than half of residents are overweight or obese
 - 4 in 5 people do not meet physical activity requirements
 - 3 in 4 adults do not eat enough fruits and vegetables
 - 1 in 5 people live in an area with limited access to affordable and quality food (food desert)
- Mental and Behavioral Health and Addiction**
 - More than 1 in 10 adults have reported poor mental health
 - 1 in 6 students smoke cigarettes, compared to 1 in 10 across Vermont
 - 1 in 5 students report binge drinking*

*Binge drinking is defined as drinking 5+ drinks within a couple of hours.

Health Concerns Identified by Focus Groups

- Access to Care**
 - Increase primary care and dental care availability
 - Improve awareness of hospice and palliative care offerings
- Obesity and Healthy Behaviors**
 - Support community and economic development to promote exercise and access to healthy foods
 - Advance health and wellness programs
- Mental and Behavioral Health and Addiction**
 - Develop youth mentoring and stress management program
 - Expand substance abuse prevention and treatment options

Specific Community Findings: Bennington County

Contents:

- Bennington County Data Summary
- Bennington Focus Group Results
- Manchester Focus Group Results
- Bennington Public Forum Results



Bennington County Data Summary

Maternal and Child Health

- The number of teen births is 43% higher than across Vermont
- Women are 70% more likely to smoke before pregnancy compared to state average

Disease Prevalence

- The rate of lung cancer is 22% higher than the national average
- Nearly 1 in 4 adults have been diagnosed with asthma

Mental and Behavioral Health

- The number of adult smokers is 40% higher than across Vermont
- 1 in 4 adults have been told they have a depressive disorder



Bennington Focus Group Results

Access to Care

- Increase access to primary care and dental care
- Education on health insurance options and medication management

Obesity and Healthy Behaviors

- Education on link between good health and nutrition/exercise
- Access to affordable housing, healthy foods, and transportation
- Life skills education for young adults and new parents

Mental and Behavioral Health

- Substance abuse prevention and treatment
- Connecting seniors to community
- Positive role models for children and teens



Manchester Focus Group Results

Access to Care

- Increase primary care and dental care
- Affordable and readily-available transportation to care appointments
- Support for end-of-life planning and at-home care

Obesity and Healthy Behaviors

- Education on nutrition and physical activity
- Early childhood care and support for new families

Mental and Behavioral Health

- Mentorship program for children and teens
- Substance abuse prevention education
- Reduction of stigma surrounding mental health



Bennington Public Forum Results

Access to Care

- Increase number of primary care and dental care providers
- Improve transportation options

Obesity and Healthy Behaviors

- Increase walkability and available exercise locations
- Reproductive health education and access to birth control
- Improve support and follow-up of current wellness programs

Mental and Behavioral Health

- Address connection between untreated mental health issues and homelessness
- Increase number of mental health providers and support programs for people with mental health issues



Specific Community Findings: Windham County

Contents:

- Windham County Data Summary
- Wilmington Focus Group Results



Windham County Data Summary

Access to Care

- 1 in 3 adults have not had a routine doctor visit
- 1 in 4 women have not had a recent pap smear
- The rate of heart disease is 22% higher than across Vermont

Youth Mental Health

- More than 1 in 4 students often feel sad and hopeless
- Nearly 1 in 6 students have made a plan to attempt suicide or attempted suicide in the past 12 months

Wilmington Focus Group Results

Access to Care

- Recruit pediatrician and offer mental health care
- Provide primary care on weekends

Obesity and Healthy Behaviors

- Improve available space for physical activity and socialization
- Increase affordable childcare offerings and activities available during school breaks

Mental and Behavioral Health

- Develop mentoring program for children and youth
- Implement parenting and life skills programs for new parents

Specific Community Findings: Rensselaer County

Contents:

- Rensselaer County Data Summary
- Hoosick Falls Focus Group Results

Rensselaer County Data Summary

Disease Prevalence

- More than half of all adults have high cholesterol
- The rate of lung cancer is 44% higher than national average
- The rate of heart disease is 200% higher than across New York and the nation
- Nearly 1 in 10 adults have been diagnosed with diabetes

Hoosick Falls Focus Group Results

Access to Care

- Increase primary care access in local community
- More specialists at SVMC (e.g., endocrinologist)
- Transportation to SVMC

Obesity and Healthy Behaviors

- Increased literacy in early childhood
- Assistance navigating and applying for social services (food stamps, fuel assistance, etc.)

Mental and Behavioral Health

- Crisis mental health services for children
- Program to alleviate stress among children

Specific Community Findings: Washington County

Contents:

- Washington County Data Summary
- Cambridge Focus Group Results

Washington County Data Summary

♥ Disease Prevalence

- 1 in 2 adults have been diagnosed with high cholesterol
- The rate of lung cancer is 53% higher than national average
- The rate of cervical cancer is 63% higher than national average
- Nearly 1 in 10 adults have been diagnosed with Diabetes

👤 Maternal and Child Health

- 2 in 5 women receive no prenatal care in the first trimester
- The teen birth rate is 31% higher than New York's average

Cambridge Focus Group Results

Access to Care

- Access to primary care
- Chronic disease management
- Support for at-home care

Obesity and Healthy Behaviors

- Health education for parents and children
- Promote physical activity and healthy extracurricular activities

Mental and Behavioral Health

- Substance abuse prevention and treatment
- Mental health services, including crisis mental health

Specific Community Findings: Berkshire County

Contents:

- Berkshire County Data Summary
- Williamstown Focus Group Results

Berkshire County Data Summary

♥ Disease Prevalence

- Nearly 1 in 3 adults have arthritis
- The number of adults with asthma is 25% higher than the national average
- The rates of both lung cancer and prostate cancer is 20% higher than the national average

Williamstown Focus Group Results

Access to Care

- Access to primary care
- Assistance with health insurance enrollment
- Transportation to care

Obesity and Health Education

- Health education for children and families
- Wellness and prevention programs (all ages)

Mental and Behavioral Health

- Substance abuse prevention programs for teenagers
- Support for families and young children

Appendix I. Cancer Center Accreditation Focus Group Results

The SVHC Cancer Center is accredited by the American College of Surgeons' Commission on Cancer (CoC). To maintain accreditation, the Cancer Center must conduct a Community Needs Assessment as part of a systematic process that gathers information to identify the community that is being served and the barriers to care that exist within that community. This allows the cancer program to identify priorities for the target population that pose barriers to care and to implement programs, services and/or partnerships that assist the community to overcome these barriers. Pursuant to the CoC requirements for accreditation, SVHC's Cancer Committee worked with the CHNA team to ask focus group members to identify services the Cancer Center should offer for patients and their families. The results are recorded below, and will be used by the Cancer Committee to address barriers to service.

Overall Themes

- Transportation and access to care
- Recovery and post-care support
- Home care and family support services
- Additional connections to Dartmouth and other specialists
- Combined approach to treatment (alternative treatments, nutrition, spiritual care)

Hoosick Falls

- Need transportation- Build connections between groups that offer these services
- Nutrition and post-care- Transitional Care Nursing, in-home care

Williamstown

- Improve overall access
- Infusion therapy and radiation therapy
- Recovery support (support groups, home visits/care)
- Access to Dartmouth-Hitchcock specialists
- Combined approach to cancer- nutrition, alternative therapy
- Stronger affiliation with PCPs in this area
- Transportation

Manchester

- Support network and family support services
- Referral system for mental health and other issues
- Communication between individual and workplace regarding needs and management of their well-being
- No personal experience- have heard wonderful things about the cancer center

Bennington

- Increase emotional support and provide patient advocates
- Dedicated long term provider staff with improved communication to patient
- Increased marketing of services

- Increase coordination with Dartmouth
- Complimentary care (Nutritionists, alternative treatments, end-of-life care)
- Increased or better hours
- Better coordination with patient families
- Increase referrals to home care
- Support groups for patients and families
- Rural transportation to care

Cambridge

- Wigs for patients
- Housing and respite for caregivers
- Nutrition programs, music programming, and other complimentary care options
- Advocacy coordination
- Pre-cancer education
- Local oncology service (chemo close to home)
- Access to up-to-date options for care
- Lower number of cases per case worker to improve follow-up
- Spiritual and end-of-life care (Hospice)

Wilmington

- Support groups in Wilmington
- Paraprofessional Scribe/Support Program (Similar to program at Dartmouth-Hitchcock)- Provide family and patient support in doctor's office to help communicate with provider
- Increase knowledge of and access to pre-cancer screenings (offer in Wilmington)
- Case manager to support family
- Financial support
- Transportation to center

Bennington Public Forum

- Have heard great things about center
- Increase transparency
 - Educate on all options available, even if not covered by insurance
 - Engage patients in making choices
 - Discuss quality of life issues with patients
- Educate community on causes of cancer (environmental, etc.)
- Help understanding and paying for bills, especially for elderly population