

Southwestern Vermont Health Care Community Health Needs Assessment Report 2018

Southwestern Vermont Health Care

100 Hospital Drive
Bennington, VT 05201

James R. Trimarchi, Director, Strategic Planning

p. 802.440.4051/ f. 802.447.5645
james.trimarchi@svhealthcare.org

Adriana Hazelton, Community Health Project Coordinator (AmeriCorps VISTA)

p. 802.447.5190 adriana.hazelton@svhealthcare.org

Laya Buchanan, Community Health Project Coordinator (AmeriCorps VISTA)

p. 802.447.5190 laya.buchanan@svhealthcare.org

Approved by SVHC Board on June 22, 2018

Report Finalized and Posted October 1, 2018

Table of Contents

	Page
Executive Summary	3
Background	5
Methodology	6
Results	10
Priority Health Needs	15
Causes of Poor Health	16
Implementation Plan	17
Report Dissemination	20
Appendix A- Description of SVHC Corporation and Affiliates	21
Appendix B- SVHC's Service Area	23
Appendix C- Cataloguing Health Facilities and Resources	24
Appendix D- Health Indicators for Service Area	36
Appendix E- Focus Group Results- Participant Roster	41
Appendix F- Focus Group Results- Notes and Findings	43
Appendix G- SVHC Internal Review of Findings	48
Appendix H- Summary CHNA Presentation	49

Executive Summary

Southwestern Vermont Health Care (SVHC) conducted a Community Health Needs Assessment (CHNA) to:

- Determine the most pressing healthcare needs of the communities served
- Develop a comprehensive, multi-year implementation plan to address the identified concerns

SVHC is a not-for-profit corporation consisting of a medical center and affiliates (appendix A). The main campus is in Bennington, Vermont. However, satellite practices and affiliate institutions are located in communities in southern Vermont, eastern New York and northern Massachusetts.

The CHNA process involved quantitative data collection and analysis as well as qualitative input from community leaders representing the broad interests of the communities SVHC serves, including members from the Department of Health, schools, and community groups with an understanding of medically underserved, low income, and minority populations in the region.



SVHC's service area was defined as counties from which >1% of SVHC's total inpatient and outpatient volume originated, including:

- Bennington County, Vermont
- Windham County, Vermont
- Rensselaer County, New York
- Washington County, New York
- Northern Berkshire County, Massachusetts

After cataloguing prevalent health needs and reviewing data, focus groups used a structured voting system to prioritize the final list of the most pressing community health needs.

The priority health needs identified for the SVHC service region are:

- **Access to Care**
 - Improve primary care and urgent care access
 - Increase access to behavioral health services
- **Obesity and Healthy Activities**

- Enhance health and wellness programs
- Foster links between good health, nutrition, exercise, and education and economic development
- **Behavioral Health and Substance Abuse**
 - Expand substance abuse prevention and treatment options
 - Develop youth stress management and coping programs

The priority health needs identified in 2018 were similar to those identified in SVHC's 2015 CHNA, suggesting the need for a focused implementation plan based on best-practice. Evidence indicates addressing broad health needs requires both:

- Specific, targeted programs
- Public policy changes that affect the physical and social landscape of communities¹

This implementation plan, developed to address the identified health needs, leverages current knowledge of the social determinants of health and considers both national healthcare reform and state initiatives refocusing healthcare delivery on population health.

Recommendation

The recommendation to continue the comprehensive, multi-year implementation plan designed to address the underlying causes of the identified health needs includes:

- Enhancing programs directed at specific health needs identified
- Increasing collaboration with other healthcare providers and community organizations
- Fostering public policy, education and advocacy that can impact the social determinants of health
- Continuing delivery of quality care throughout the region

To achieve this recommendation, SVHC is supporting specific action items described in the Implementation Plan section below. Many of these efforts require comprehensive partnerships with community organizations. Although SVHC and partners will act promptly, it may take decades for outcomes to be fully realized. The implementation plan represents initial steps in a journey to improve systemic issues that will yield durable impact rather than create quick fixes that would yield non-durable results.

¹ World Health Organization:
http://www.who.int/social_determinants/thecommission/finalreport/key_concepts/en/index.html (accessed 05/2015)

Background

The federal Patient Protection and Portability Act (PPACA section 9007 and updates to the IRS code 501(r)(1)(A)) mandates that all non-profit hospitals conduct a community needs assessment to identify the greatest health needs of the communities they serve. This assessment must utilize both data analysis and community member input. An implementation plan to address the identified health needs is also required. Lastly, the identified health needs and implementation plan must be disseminated and made widely available to the public.

In January of 2018, SVHC began conducting the community health needs assessment with efforts concluding June. Geographically, this assessment reflected the most population dense markets of SVHC's service area: Bennington County, VT, Windham County, VT, eastern Rensselaer and Washington Counties, and northern Berkshire County, MA. Results were developed using both quantitative data and qualitative methods including 6 focus groups held throughout the region.

The proposed implementation plan includes both programmatic initiatives, such as supporting the Bennington Free Clinic and RiseVT wellness programs, as well as policy and community building initiatives, such as supporting regional economic development and funding AmeriCorps VISTA fellows to organize community efforts.

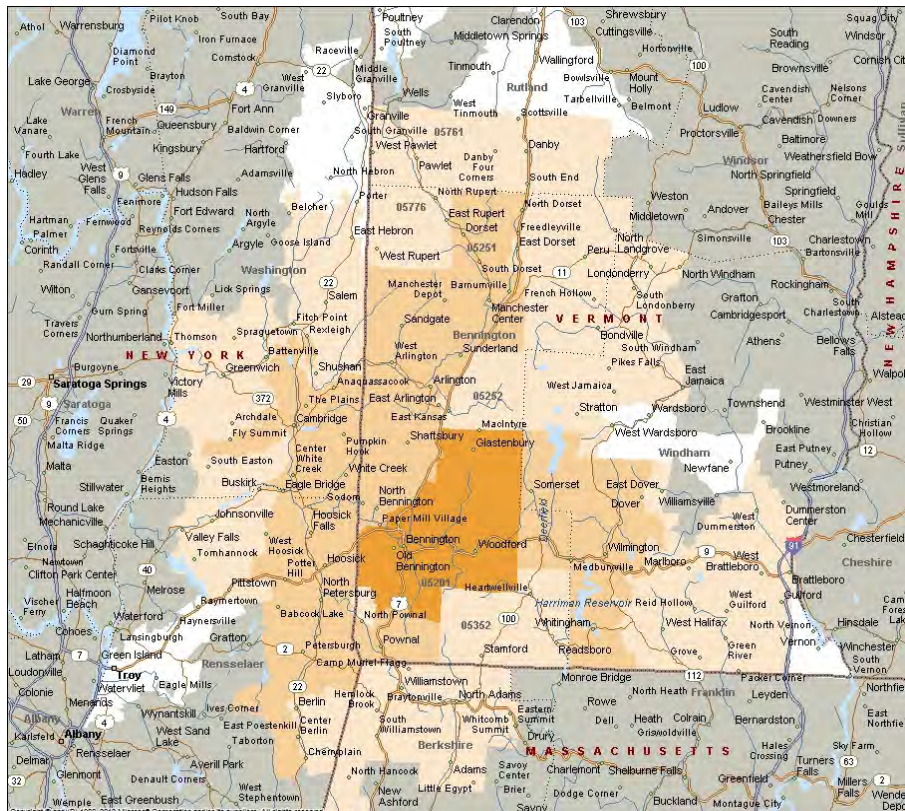
The process used, the health needs identified, and the implementation plan were reviewed and approved by senior management and SVHC's Board of Trustees (June 2018). The implementation plan aligns with SVHC's strategic goals to transform care, partner (particularly with Dartmouth-Hitchcock) and create sustainability. The initial task-oriented projects in the implementation plan have been built into SVHC's fiscal plan and future budgets.

Methodology

Defining SVHC's Service Area:

SVHC serves the tri-state area of southwestern Vermont, eastern New York and northwestern Massachusetts. Zip code analysis of the volume of services rendered to patients reaffirmed previous service area distinctions. Below is a density map indicating where patients originate:

- Darker orange areas represent frequent utilization of SVHC care (more than 10% of SVHC's total service volume)
- Medium orange areas represent medium utilization of SVHC care (1% to 10% of SVHC's total service volume)
- Light orange areas represent low utilization of SVHC care (0.1%-1% of SVHC's total service volume)
- White represents infrequent utilization of SVHC care (0.001%-0.1% of SVHC's total service volume)
- Grey areas represent rare or no utilization of SVHC care



For the CHNA, zip codes that contributed greater than 1% to SVHC's total FY2017 service volume defined SVHC's service area. See table in appendix B.

SVHC's defined service area includes:

- Bennington County, Vermont
- Deerfield Valley of Windham County, Vermont
- Eastern Washington and Rensselaer Counties in New York
- Northern Berkshire County, Massachusetts

Cataloguing Healthcare Facilities and Resources within the Community:

The Patient Protection and Portability Act mandates CHNA's catalogue health resources throughout the institutions service area. The healthcare facilities and resources within SVHC's service area were classified into the following categories:

- Hospital/medical center
- Primary care physician practice
- Specialty care practice
- Dentistry, orthodontics and oral care
- Behavioral health services
- Visiting nurses and hospice care
- Long term care and subacute care
- Physical therapy and rehabilitation

The catalog includes healthcare facilities in the following regions:

- Bennington County, Vermont
- Windham County, Vermont
- Southern Rutland County, Vermont.
- Rensselaer County, New York
- Washington County, New York
- Eastern Albany County, New York
- Eastern Schenectady County, New York
- Southeastern Warren County, New York
- Eastern Saratoga County, New York
- Northern Berkshire County, Massachusetts

Healthcare facilities outside of SVHC's service area and in adjacent counties were catalogued because these facilities likely serve as a resource for residents within SVHC's service area (appendix C).

Quantitative Data Resources:

A master list of quantitative health indicators was developed using a range of resources, including:

- Behavioral Risk Factor Surveillance System (BRFSS)
- Youth Risk Behavior Survey (YRBS)
- County Health Rankings Reports

- Community Commons Reports
- US Census Data
- State Health Department Reports

This list was amended to focus on indicators in the following categories:

- Population Demographics
- Access to Health Services
- Health Behaviors
- Maternal and Child Health
- Health Status

Comparative data sets were developed to illustrate disparities between county averages, state, and national averages. Specific data for smaller communities in New York and Massachusetts was not available in some cases as New York and Massachusetts Departments of Health only publish data at a regional scale.

Some aspects of the quantitative data and county comparisons were shared with members of the focus groups to deepen their understanding of the health needs in the communities SVHC serves.

Qualitative Data Resources:

Six separate, in-depth focus groups were conducted involving over 90 community members and leaders from multiple sectors in Vermont, New York, and Massachusetts communities. These focus groups consisted of members who represent the broad interests of the community served by SVHC. Members included state and local public health departments, a wide variety of community leaders, and representatives of the medically underserved, low-income and minority populations. Focus group discussions did not exclude any populations with health disparities or groups at risk of not receiving adequate medical care because of being uninsured or underinsured or due to geographic, language, financial or other barriers.

The focus groups identified the health needs in the following demographic segments:

- Population Demographics
- Pre-K and Parents
- Children and Youth (ages 6-12)
- Teens and Young Adult (ages 13-20)
- Adults (ages 21-34)
- Mature Adults (ages 35-64)
- Seniors (age >65)

To reduce the list of identified health needs, similar health needs in each segment were grouped and similar health needs in separate age segments were combined. Focus groups reviewed quantitative data to further deepen their perspective of the health needs of the community.

After cataloguing prevalent health needs and reviewing quantitative and qualitative data, focus groups used a structured voting system to prioritize the final list of the most pressing community health needs. Focus groups also developed initial recommendations for the implementation plan to address the most pressing health needs identified.

A focus group participant roster and meeting notes appears in appendices E and F.

Survey of Community Leaders:

To broaden input from community leaders unable to attend focus groups, leaders were offered an on-line survey. The survey documented the community from which the leader hailed and the degree to which specific issues were a significant concern in that community. Questions were phrased as statements such as “Public transportation is an issue in my community” and answers were collected through a Likert scale, with answers ranging from disagree to agree. One question requested identification of the highest priority issues. Two open ended questions allowed survey takers to provide suggestions to address the most pressing health needs or to otherwise comment.

SVHC has received no written comments in response to the 2015 CHNA or implementation plan and therefore did not integrate any written feedback into the 2018 CHNA.

Determining the Priority Health Needs:

The final list of priority health needs across SVHC’s service area was determined by a team at SVHC that reviewed the quantitative data and county comparisons, the existing internal and external reports, and the priority health needs identified by community members in the focus groups. The priority health needs were reviewed by the SVHC Board Quality and Safety Committee and SVHC Nurse Practice Council, who validated the findings (appendix G). All sources identified similar pressing health needs, and thereby no further analysis or prioritization matrix was required. The most pressing health needs of SVHC’s communities were similar to those identified during the SVHC CHNA conducted in 2012 and 2015, demonstrating that changing the underlying determinants of health requires decades and achieving durable outcomes may require generations.

The final community health needs and implementation strategy was approved by the SVHC Board of Trustees at the July meeting.

Results

SVHC's Service Area:

SVHC serves the tri-state area of southwestern Vermont, eastern New York, and northwestern Massachusetts. Zip code analysis of the volume of services rendered to patients reaffirmed previous service area distinctions. SVHC's defined service area includes:

- North and south Shires of Bennington County, Vermont
- Deerfield Valley of Windham County, Vermont
- Eastern Washington and Rensselaer Counties in New York
- Northern Berkshire County, Massachusetts

See the density map in Methods and table in appendix B for further details.

Cataloguing Healthcare Facilities and Resources within the Community:

Many healthcare facilities and resources were identified throughout SVHC's service area and the adjacent communities. A comprehensive list of these organizations and their affiliation with SVHC is in appendix C. Given the breadth of this list, it is likely that some organizations have been accidentally omitted, other organizations on the list may have ceased to exist, and new organizations likely have been launched that have not yet been identified. However, this list is required by legislation and every effort was made to research organizations and to attempt to provide a comprehensive list.

Quantitative Health Needs of the Communities:

The tables on subsequent pages illustrate a subset of the quantitative opportunities to improve the health of communities within the SVHC service area. An expanded table with additional metrics can be found in appendix D. Some data is not available at the county or state level.

The data illustrates issues spanning from direct medical care to social determinants of health. For example, the number of primary care providers per 100,000 people in Washington County (NY) is less than half that across other counties, states and the nation. At the other end of continuum, only 29 percent of students in Bennington County were physically active for 60 minutes, 5 or more days a week by comparison to nearly 50 percent across the nation. These data suggest that a multi-level approach is required to improve the health of the communities served by SVHC.

	Vermont	Bennington County (VT)	Windham County (VT)	New York	Rensselaer County (NY)	Washington County (NY)	Massachusetts	Berkshire County (MA)	Nation
Access to Health Services									
Percent of adults with usual primary care provider	87.8%	89.6%	88.0%	83.1%	89.6%	76.3%	88.5%	88.9%	77.9%
Number Primary Care Physicians / 100,000 people	127	107	119	112	58	32	124	133	98
Percent of adults without health insurance	5.8%	6.6%	6.2%	10.2%	6.2%	7.4%	3.9%	4.0%	13.2%
Percent of children without health insurance	1.3%	1.5%	1.3%	2.7%	2.2%	2.7%	1.2%	1.4%	5.1%
Health Behaviors									
Substance Use									
Percent of adults who smoke	16.8%	21.0%	17.1%	16.8%	18.2%	30.9%	15.2%	17.8%	18.1%
Percent of students who smoked cigarettes in the past 30 days	11.0%	10.0%	11.0%	8.8%	N/A	N/A	7.7%	N/A	10.8%
Percent of students who had five or more drinks of alcohol within a couple of hours in the past 30 days (Binge Drinking Rate)	16.0%	15.0%	16.0%	15.6%	N/A	N/A	17.7%	N/A	17.7%
Weight, Physical Activity									
Percent of adults that are overweight or obese	59.4%	59.6%	54.5%	60.7%	65.3%	75.7%	59.9%	59.8%	63.3%
Percent of youth that are overweight or obese	26.0%	26.0%	26.0%	27.0%	N/A	N/A	26.3%	N/A	30.3%
Percent of students physically active for 60 minutes, 5+ days a week	39.0%	29.0%	31.0%	41.8%	N/A	N/A	49.2%	N/A	48.6%
Percent of adults who eat 5+ fruit and vegetable servings per day	30.1%	30.2%	31.4%	26.8%	30.9%	N/A	27.5%	27.4%	24.3%

	Vermont	Bennington County (VT)	Windham County (VT)	New York	Rensselaer County (NY)	Washington County (NY)	Massachusetts	Berkshire County (MA)	Nation
Maternal and Child Health									
Rate of births that occurred in women aged 15-19/1,000 people aged 15-19	17.0	22.0	25.0	21.0	23.0	30.0	16.0	19.0	22.3
Percent of women who smoked before pregnancy	13.5%	N/A	N/A	6.4%	N/A	N/A	8.3%	N/A	N/A
Health Status									
Chronic Diseases									
Percent of adults with Heart Disease	4.0%	4.6%	5.1%	4.3%	12.0%	5.0%	3.9%	4.0%	4.4%
Percent of adults with Asthma	15.4%	21.3%	15.1%	14.3%	9.1%	16.5%	15.4%	16.7%	13.4%
Percent of adults with Diabetes	6.7%	6.9%	6.1%	8.8%	7.9%	9.4%	8.4%	7.8%	9.2%
Percent of adults with 6 or more teeth removed	15.9%	17.9%	17.2%	15.7%	18.2%	28.3%	14.0%	18.7%	15.7%
Mental Health									
Percent of adults that have ever been told they have a depressive disorder	22.00%	22.00%	23.00%	N/A	N/A	N/A	18.70%	N/A	17.00%
Percent of students that felt sad/hopeless almost every day for 2+ weeks in a row	20.00%	23.00%	21.00%	28.60%	N/A	N/A	27%	N/A	29.90%

Qualitative Health Needs of the Communities SVHC Serves:

The focus groups qualitatively identified health needs in their communities. Some health needs were identified as specific to individual communities, however, the vast bulk of the health needs identified by the focus groups were similar and can be collated to the following groupings:

- Behavioral health and substance abuse
- Access to primary care and urgent care
- Schools performance and resources, internships, and job training
- Employment opportunities and living wages
- High cost of living (housing, healthcare, etc.)
- Housing and transportation access
- Affordable and convenient childcare
- Access to healthy and affordable food
- Teen use of vaporizers with nicotine

These health needs reflect the focus groups' understanding of the determinants of health and cast the CHNA in a non-medical model. As such, the associated implementation plan is oriented around community programming that addresses the social determinants of health.

Focus groups members emphasized behavioral health and substance abuse in all communities as a major issue. Manchester, VT attributed its lack of substance abuse treatment facilities, in part, to false community perception and stigma. Prevention of and rehabilitation from substance use disorder was cited as a major priority for all regions. All focus groups also recognized the need for positive role models, mentorship and internship programs for children, teenagers, and young adults. All focus groups mentioned a dearth of reasonably priced housing and/or employment.

Cambridge community members emphasized the need for mental health programs in schools due to a high number of children and youth coping with mental health issues and crises. In addition, the Wilmington VT community highlighted a need to expand access to primary care, at-home senior care, weekend care, and pediatric care.

All regions across the service area identified a need for affordable early childhood care and afterschool programming, particularly in Manchester, Wilmington, Cambridge, and Williamstown.

The priority health needs identified by each focus group appear in appendix F and were comparable to those identified by focus groups during SVHC's 2012 and 2015 CHNA.

The survey of community members not able to attend the focus groups yielded similar results to the focus groups. The issues that garnered the highest score for issue significance were substance abuse, access to mental health care, and reasonably priced housing.

Community Health Needs- Community Leaders Survey 2018

Issue in my community	Average score [Scale 0-6, higher number reflects more significant issue]
Access to public transportation	4.3
Unemployment	3.9
Access to safe, reasonably-priced housing	5.0
Access to inexpensive, health foods	4.5
Access to childcare for working parents	4.9
Access to primary care for chronic disease management	3.9
Access to urgent care for minor acute illness	3.9
Substance abuse	5.4
Access to care for mental health	5.2
Very significant issue	
Significant issue	
Less significant issue	

When survey respondents were asked to prioritize the community health needs again substance abuse, access to care for mental health, access to reasonably priced housing, and the need for affordable and convenient childcare rose to the top.

Community Health Needs- Community Leaders Survey 2018

Priority Health Needs Identified (in order of priority)
Substance abuse
Access to care for mental health
Access to safe, reasonably-priced housing
Access to childcare for working parents
Unemployment
Access to primary care for chronic disease management
Access to urgent care for minor acute illness
Access to public transportation

The findings of the survey reinforced the findings of the focus groups and aligned with the issues identified through quantitative analysis.

Priority Health Needs:

The following priority health needs were determined by combining quantitative data, comments from focus groups, and existing health reports.

The priority health needs across SVHC's service area are:

- **Access to Care**
- **Obesity and Healthy Activities**
- **Behavioral Health and Substance Abuse**

Access to Care was identified as a priority in two broad categories, the first is to increase primary and urgent care access and the second is to improve access to behavioral health services. These target issues will serve to focus efforts during the next three years, including efforts to address the communities' needs for chronic disease management and options for treatment of minor conditions that are less expensive and more convenient than the emergency department, as well as treatment for the growing portion of the population struggling with self-worth, anxiety, depression, relationships, and their role in society. Creating joint ventures and partnerships that support expanding access to these care areas will be essential for long term sustainability of the delivery system.

Obesity and Healthy Activities is a wide-ranging category that informs initiatives across many scales. These initiatives form two basic categories; the first is to enhance health and wellness programs and the second is to foster links between good health, nutrition, exercise, and education and economic development. Direct health and wellness programming provides not only individual health benefits but also creates the foundation for a social framework upon which behavioral health programming can be built. Even more broadly, this CHNA recognizes the relationship between economics and health at both the individual and regional scales. The resulting implementation plan thus operates to improve the individual's health as well as the region's underpinnings that drive health, particularly the lack-luster economy of the region.

Behavioral Health and Substance Abuse have emerged as pillar issue in the communities SVHC serves. To begin to address this complex issue, the CHNA directs SVHC to exert effort in prevention and resilience building as well as treatment. Creating programs that reduce the risk of developing substance abuse disorder are as critical as programs treating individuals already afflicted. This CHNA recognizes youth are particularly vulnerable and need stress management and coping skills. Without these skills, youth are at risk of developing behavioral health conditions and thereby substance abuse. Working with community partners will be essential to address the challenges faced by youth so they can envision a bright future for themselves.

The following graphic illustrates the priority health needs identified in SVHC's 2018 CHNA.



The Causes of Poor Health

A large body of research indicates that the most effective means of improving community health is to address underlying social and economic determinants: the root causes of health issues. This approach is affirmed by the World Health Organization's position, "the social determinants of health are the circumstances in which people are born, grow up, live, work, and age, as well as the systems put in place to deal with illness. These circumstances are in turn shaped by a wider set of forces: economics, social policies, and politics."

The socio-economic determinants of population health include:

- **Income** – Income is closely linked to differences in health. People who have greater economic opportunity typically have better health.
- **Education** – Educational levels are strongly linked to differences in health. People with some college or post-high-school education have a longer life expectancy, less chronic disease burden and greater general health than those with lower educational levels.
- **Physical Environment** – Physical environment plays a large role in determining health outcomes. The ability to walk safely, access recreational opportunities, conveniently find nutritional food options, access affordable quality homes with limited contaminants, and a variety of other environmental factors directly impact one's health and the overall health of a community.
- **Nutrition and Lifestyle** – Food insecurity, exercise, smoking, and drug abuse impact health and the health determinates mentioned in this section.
- **Public Policy** – State legislation has measurable effects on public health by providing access to health care providers, minimum wage requirements, Medicaid and Medicare programs and funding for key health related programs and infrastructure (ex. parks).
- **Social Policy** – Health can be promoted by local laws, ordinances, and policies such as nutritional standards for school menus, smoking bans in workplaces, tax-based support for afterschool programs, access to quality child care, and municipal funding for sidewalks and parks.

Weaving community policy initiatives together with programmatic activities is the key to improving the health needs identified by SVHC's assessment and are central to the implementation plan.

SVHC Implementation Plan to Address Priority Health Needs

The comprehensive, multi-year implementation plan addresses both programmatic and policy barriers. The plan spans the health system and leverages community collaborators. This plan is a living document and the specific initiatives will be adjusted, adapted or not pursued based upon effectiveness, budgetary constraints or changing partnership relationships. The activities in the plan fall into several themes:

- **Medical Support Programs-** These programs facilitate access to needed medical care, particularly primary care, urgent care and behavioral health services. For example, positioning a psychiatrist in the emergency department improves access to behavioral health services for patients in crisis and support for the Bennington Free Clinic provides medical care for those without financial means
- **Community Building and Economic Development-** These programs enhance the regions communities and improve life for all. For example, SVHC is a critical investor in the downtown redevelopment project (Putnam Project) which aims to revitalize the central economic hub of Bennington Country, while smaller scale projects like the Lightning Jar and IdeaFund to build the entrepreneurial ecosystem
- **Health and Wellness Programs-** This group of activities spans several dimensions including the Health Care Share which provides locally grown foods to cardiac and pulmonary patients to RiseVT, a comprehensive wellness program targeting childhood obesity
- **Sponsorships and Community Event Giveaways-** SVHC sponsors booths and provides swag for many local events thereby increasing visibility of healthy choices and encouraging healthy behaviors

Each initiative is multidimensional and supports several priority health needs. For example, the support for the Bennington Free Clinic increases access to quality primary care. However, because a disproportionate percentage of the patients served also struggle with behavioral health issues and substance abuse, the efforts of the Bennington Free Clinic care givers also addresses these priority health needs identified by the CHNA. Similarly, the SVHC walking trail encourages exercise to reduce obesity, while improving mental resilience through stress management and building social relationships. How each initiative addresses the priority health needs and supports Vermont's All-Payer Model goals is best observed in the grid on the subsequent page.

SVHC cannot address these priority health needs and improve community health alone. Continuing to foster collaboration with local organizations and engagement with municipalities and partnership with

community leaders is key to achieving success. The health of the communities served by SVHC will improve with deployment of the multi-year implementation plan that includes both programmatic and policy initiatives. Although SVHC and partners will act promptly, it may take decades for outcomes to be fully realized. The implementation plan represents initial steps in a journey to improve systemic issues that will yield durable impact rather than create quick fixes that would yield non-durable results.

In addition to broadly identifying the priority health needs and establishing an implementation plan that addresses the socio-economic drivers of community health, the SVHC Regional Cancer Center has leveraged the CHNA findings to remove barriers to care specific to cancer patients in accordance with accreditation standard 3.1. The cancer center has developed cancer care navigation strategies and programs that consider the socioeconomic status of patients and the derivative patient-centered barriers. These strategies and programs align with Vermont's Framework for Action, Cancer Plan² and will be approved by SVHC's regional cancer committee in the fall of 2018. This effort highlights how specific care service lines at SVHC utilize the CHNA findings to guide service delivery and quality.

A summary of the CHNA methodology, findings and implementation plan in presentation format appears in appendix H.

² <http://www.healthvermont.gov/sites/default/files/documents/2016/12/VermontCancerPlan.pdf>

Vermont All Payer Model Goals	Improve access to services (Primary Care)			Reduce prevalence and morbidity of chronic disease							Reduce deaths from suicide and drug overdose		
SVMC Community Health Needs Assessment	Access to Care			Obesity and Healthy Behaviors							Behavioral Health and Substance Abuse		
	Primary Care	Urgent Care	Behavioral Health Services	Health and Wellness Programs	Food Insecurity and Nutrition	Active Lifestyle Promotion	Housing Availability	Transportation Access	Economic Development	Education System Transformation	Prevention	Treatment	Youth Resilience
Medical Support Programs													
Expanded Psychiatrist Access			x	x							x	x	
Social Determinants of Health Screening				x	x	x	x	x			x		
Expand Transitional Care Nursing Program				x	x	x	x	x			x	x	
Bennington Free Clinic Support	x	x	x	x	x						x	x	
Community Building and Economic Development													
AmeriCorps VISTA Fellows				x	x	x			x	x	x		x
IdeaFund microgrant program				x	x	x	x	x	x	x			x
Grow Bennington Initiative (lights, parks, etc.)				x		x			x				x
Putnam Downtown Redevelopment Project							x	x	x				
Healthy Homes Program							x	x	x				
Educational Systems Improvement													
Reality Fair									x	x	x		x
Support Governor's Institute (GIV)									x	x	x		x
4th/5th grade entrepreneur program									x	x	x		x
After school programming				x	x	x			x	x	x		x
Bennington Young Professionals support				x		x		x	x				
Youth Appreciation Day				x		x			x		x		x
Reserve a bed- Coalition for the homeless			x	x	x		x	x			x	x	
Lightning Jar coworking space support									x	x			
Transportation Collaborative	x	x	x				x	x	x				
Health and Wellness Programs													
Tobacco Cessation Program				x		x					x		
Youth Stress and Substance Abuse Program				x		x				x	x		x
Health Care Share (healthy food for patients)				x	x								
Food Insecurity Programming				x	x								
Oral Health Skills Building				x						x			x
RiseVT				x	x	x		x	x	x	x		x
SVMC Walking Trail (maintenance / upgrades)				x		x			x		x		x
Town of Bennington Trails (Ninja Trail, etc.)				x		x		x	x		x		x
Stark Street and other playground upgrades				x		x			x		x		x
Society supports													
Hunger Free VT				x	x					x			x
American Lung Association				x		x							x
American Cancer Society				x									
Community library support									x	x	x		x
Sponsorships and Community Event Giveaways				x		x			x		x		x

Report Dissemination

Upon completion this report will be disseminated to:

- Individuals that participated in the focus groups
- Vermont Department of Health
- Green Mountain Care Board

The report will be made available to the public as a PDF file from the institutional web page (<http://svhealthcare.org>). Members of the public can also request a print copy of this report by contacting James Trimarchi via e-mail (james.trimarchi@svhealthcare.org) or phone (802.440.4051).

Appendix A. Description of SVHC- Southwestern Vermont Health Care Corporation and Affiliates

Southwestern Vermont Health Care Corporation (SVHC) is a not-for-profit corporation organized under the laws of the State of Vermont for the purpose of serving as a parent organization for wholly owned or controlled subsidiary corporations. Activities performed by SVHC include managing investments and operating and managing buildings and equipment owned and leased by subsidiaries and other related entities. SVHC and its subsidiaries are providers of health services with facilities in and around the Bennington, Vermont, area. The subsidiaries of the corporation are:

Southwestern Vermont Medical Center, Inc. (SVMC) is a not-for-profit, acute care hospital which provides diagnostic and treatment services.

Mount Anthony Housing Corporation (MAHC) is doing business as Centers for Living and Rehabilitation (CLR) and is a not-for-profit Corporation organized for the purpose of developing, managing and operating nursing homes.

Southwestern Vermont Health Care Auxiliary (SVHCA) is a not-for-profit corporation organized for the purpose of serving and assisting SVHC and its subsidiaries in promoting health and welfare of the community in accordance with SVMC's objectives and to conduct various philanthropic activities for SVMC.

Southwestern Vermont Health Care Enterprises (SVHCE) is a for-profit corporation organized for the purpose of providing family practice, other specialty physician services as well as other activities. Currently, there are no operating activities occurring in the entity.

Southwestern Vermont Health Care Foundation (Foundation) is a not-for-profit corporation organized exclusively for charitable and education purposes for SVHC, its successor's subsidiaries and affiliates.

Southwestern Vermont Health Care New York, LLC (SVHCNY) is a not-for-profit professional employment organization organized for staffing purposes in addition to owning and leasing property for Twin Rivers Medical, P.C.

Twin Rivers Medical, P.C. (Twin Rivers) is a New York not-for-profit corporation organized for the purpose of providing family practice and other specialty physician services. SVMC controls the operations of Twin Rivers.

Northern Berkshire Medical, P.C. (NBM) is a Massachusetts not-for-profit corporation organized for the purpose of providing medical practice and other specialty physician services. Currently NBM operates Northern Berkshire Orthopedics (NBO) as a "DBA". SVMC controls the operations of NBM/NBO.

SVHC – Hoosick Falls, LLC is a New York limited liability corporation to serve as the sole member of Hoosick Falls Health Center.

Hoosick Falls Health Center is doing business as The Center for Nursing and Rehabilitation at Hoosick Falls is a not-for-profit New York corporation organized for the purpose of operating the Health Center.

Appendix B. SVHC's service area

Analysis of volume of services rendered to patients by zip code. Zip codes that garnered greater than 1% of the Total SVHC fiscal year 2017 volume were included in SVHC's service area for the CHNA and are highlighted in yellow.

ZIP/POSTAL	CODE	County	State	Percent of total encounters
05201	BENNINGTON	Bennington County	VT	35.0%
05255	MANCHESTER CNTR	Bennington County	VT	6.5%
12090	HOOSICK FALL	Rensselaer County	NY	6.5%
05250	ARLINGTON	Bennington County	VT	6.0%
05261	POWNA	Bennington County	VT	4.6%
05262	SHAFTSBURY	Bennington County	VT	4.5%
05257	NORTH BENNINGTON	Bennington County	VT	4.3%
U	UNKNOWN	Unknown	Unknown	3.2%
05363	WILMINGTON	Windham County	VT	3.2%
12816	CAMBRIDGE	Washington County	NY	2.1%
05251	DORSET	Bennington County	VT	1.9%
01267	WILLIAMSTOWN	Berkshire County	MA	1.9%
12138	PETERSBURG	Rensselaer County	NY	1.7%
01247	NORTH ADAMS	Berkshire County	MA	1.6%
12057	EAGLE BRIDGE	Washington County	NY	1.6%
05254	MANCHESTER	Bennington County	VT	1.2%
05356	WEST DOVER	Windham County	VT	1.1%
05350	READSBORO	Windham County	VT	1.1%
05361	WHITINGHAM	Windham County	VT	0.9%
05253	EAST DORSET	Bennington County	VT	0.9%
05340	BONDVILLE	Bennington County	VT	0.7%
05342	JACKSONVILLE	Windham County	VT	0.7%
05260	NORTH POWNA	Bennington County	VT	0.6%
12028	BUSKIRK	Washington County	NY	0.6%
05252	EAST ARLINGTON	Bennington County	VT	0.6%
12022	BERLIN	Rensselaer County	NY	0.6%
05352	STAMFORD	Bennington County	VT	0.5%
05761	PAWLET	Rutland County	VT	0.5%
01220	ADAMS	Berkshire County	MA	0.4%
05739	DANBY	Rutland County	VT	0.4%
12865	SALEM/JACKSONVILLE	Washington County	NY	0.4%
12873	SHUSHAN	Washington County	NY	0.3%
05776	WEST RUPERT	Bennington County	VT	0.3%
05358	WEST HALIFAX	Windham County	VT	0.3%
05301	BRATTLEBORO	Windham County	VT	0.3%
05148	LONDONDERRY	Windham County	VT	0.3%
05155	STRATTON MNT	Windham County	VT	0.2%
12834	GREENWICH	Washington County	NY	0.2%
12094	JOHNSONVILLE	Rensselaer County	NY	0.2%
05152	PERU	Bennington County	VT	0.2%
12185	VALLEY FALLS	Rensselaer County	NY	0.2%
12089	HOOSICK	Rensselaer County	NY	0.2%
05341	EAST DOVER	Windham County	VT	0.2%

Appendix C. Cataloguing Health Facilities and Resources within the community

The healthcare facilities and resources within SVHC's service area were classified into the following categories:

- Hospital/medical center
- Primary care physician practice
- Specialty care practice
- Dentistry, orthodontics and oral care
- Behavioral health services
- Visiting nurses and hospice care
- Long term care and subacute care
- Physical therapy and rehabilitation

The catalog includes healthcare facilities in the following regions:

- Bennington County, Vermont
- Windham County, Vermont
- Southern Rutland County, Vermont
- Rensselaer County, New York
- Washington County, New York
- Eastern Albany County, New York
- Eastern Schenectady County, New York
- Southeastern Warren County, New York
- Eastern Saratoga County, New York
- Northern Berkshire County, Massachusetts

Healthcare facilities outside of SVHC's service area and in adjacent counties were catalogued because these facilities likely serve as a resource for residents within SVHC's service area.

Care Resources in Region				
State	County	Type	Institution Name	Affiliate of SVHC
Vermont	Bennington	Hospital / Medical Center	Southwestern Vermont Medical Center	SVHC
Vermont	Bennington	Primary Care Physician Practice	SVHC Primary Care	SVHC
Vermont	Bennington		SVHC ExpressCare	SVHC
Vermont	Bennington		SVHC Northshire Campus	SVHC
Vermont	Bennington		SVHC Pownal Campus	SVHC
Vermont	Bennington		SVHC Pediatrics	SVHC
Vermont	Bennington		Mount Anthony Primary Care	Not SVHC
Vermont	Bennington		Bennington Family Practice	Not SVHC
Vermont	Bennington		Bennington Community Based Outpatient Clinic	Not SVHC
Vermont	Bennington		Stram Center for Integrative Medicine	Not SVHC
Vermont	Bennington		BattenKill Valley Health Center	Not SVHC
Vermont	Bennington		Green Mountain Pediatrics	Not SVHC
Vermont	Bennington		Brookside Pediatrics	Not SVHC
Vermont	Bennington		Avery Wood, MD Family Medicine	Not SVHC
Vermont	Bennington		Randy Anselmo, MD Family Medicine	Not SVHC
Vermont	Bennington		Eric Seyferth, MD	Not SVHC
Vermont	Bennington		Keith Michl, MD	Not SVHC
Vermont	Bennington		Angela Windgate, MD	Not SVHC
Vermont	Bennington	Specialty Care Practice	Cardiology at SVMC	SVHC
Vermont	Bennington		Gastroenterology at SVMC	SVHC
Vermont	Bennington		General Surgery at SVMC	SVHC
Vermont	Bennington		Infectious Disease at SVMC	SVHC
Vermont	Bennington		Inpatient Medicine (Hospitalist) at SVMC	SVHC
Vermont	Bennington		Emergency Medicine at SVMC	SVHC
Vermont	Bennington		Obstetrics and Gynecology (OB/GYN) at SVMC	SVHC
Vermont	Bennington		Occupational Medicine at SVMC	SVHC
Vermont	Bennington		Orthopaedics at SVMC	SVHC
Vermont	Bennington		Pathology at SVMC	SVHC
Vermont	Bennington		Oncology: Southwestern Vermont Regional Cancer Center	SVHC
Vermont	Bennington		Rheumatology at SVMC	SVHC
Vermont	Bennington		Urology at SVMC	SVHC
Vermont	Bennington		East Dorset Medical Campus	Not SVHC
Vermont	Bennington		Martha Stitelman, MD	Not SVHC
Vermont	Bennington		The Memory Clinic	Not SVHC
Vermont	Bennington	Dentistry, Orthodontics, Oral Care	SVHC Dentistry	SVHC
Vermont	Bennington		Mid-Vermont ENT	Not SVHC
Vermont	Bennington		Bennington Dental Center	Not SVHC
Vermont	Bennington		Oral and Dental Implant Surgery	Not SVHC
Vermont	Bennington		Union Street Dental	Not SVHC
Vermont	Bennington		Russel Dental Group	Not SVHC
Vermont	Bennington		Equinox Dental	Not SVHC
Vermont	Bennington		Brent B. Coffield, DDS	Not SVHC
Vermont	Bennington		Catherine Chech, DMD	Not SVHC
Vermont	Bennington		Christopher Bevin DDS	Not SVHC
Vermont	Bennington		Elaine M. McLain, DDS	Not SVHC
Vermont	Bennington		Eric P. Holmgren, DDS	Not SVHC
Vermont	Bennington		Geoffry H. Campe, DDS (orthodontics)	Not SVHC
Vermont	Bennington		John M. Stewart, DDS	Not SVHC
Vermont	Bennington		Kateryna Latypova, DDS	Not SVHC
Vermont	Bennington		Lance A. Smagalski, DDS	Not SVHC
Vermont	Bennington		Lawrence J. Pietrucha, DDS	Not SVHC
Vermont	Bennington		Loren Peck, DDS	Not SVHC
Vermont	Bennington		Mary Corinne Squire, DDS	Not SVHC
Vermont	Bennington		Michael E. Sleeman, DDS	Not SVHC
Vermont	Bennington		Oral Surgery Associates	Not SVHC
Vermont	Bennington		Pedriodontics & Implants: William E. Guild, DDS	Not SVHC
Vermont	Bennington		Philip H. Ehret, DDS	Not SVHC
Vermont	Bennington		Richard Heilemann, DDS	Not SVHC
Vermont	Bennington		Robert Miller, DDS	Not SVHC
Vermont	Bennington		Salem Dentistry	Not SVHC
Vermont	Bennington		Steven Kane, DDS	Not SVHC
Vermont	Bennington		Thomas E. Macksey DDS	Not SVHC
Vermont	Bennington		Wesley Baker, DDS	Not SVHC
Vermont	Bennington	Behavioral Health Services	United Counseling Services	Not SVHC
Vermont	Bennington		Susan M. Sweeney, Psychologist, MA, LADC	Not SVHC
Vermont	Bennington		Nancy A Field, PhD	Not SVHC
Vermont	Bennington		Elizabeth Fredland	Not SVHC
Vermont	Bennington		Neurological Consultants	Not SVHC
Vermont	Bennington		David Mellinger	Not SVHC
Vermont	Bennington		Robert Hemmer Psychologist	Not SVHC
Vermont	Bennington		The Spicer Family Center	Not SVHC
Vermont	Bennington		Patricia A. Mccullagh, PSYD	Not SVHC
Vermont	Bennington		Martha Bowen Licsw	Not SVHC
Vermont	Bennington		Steven Anthony Sola, Ph.D., FACAPP	Not SVHC
Vermont	Bennington		Newfane Wellness	Not SVHC
Vermont	Bennington		Ellen C. Collins-Reed, LICSW	Not SVHC
Vermont	Bennington		David Mellinger	Not SVHC
Vermont	Bennington		Catapano Lisa K MD	Not SVHC
Vermont	Bennington		Louis Propp, PsyD	Not SVHC
Vermont	Bennington		Stephen R. King, PhD	Not SVHC
Vermont	Bennington		Gala Deering, Psychologist, MA	Not SVHC
Vermont	Bennington		Lisa J. Carton	Not SVHC
Vermont	Bennington		Nancy Banfield, LICSW	Not SVHC
Vermont	Bennington		Meredith Harris Ozier MS, LCMHC	Not SVHC
Vermont	Bennington		Paul Scott, Licensed Psychoanalyst	Not SVHC
Vermont	Bennington		Raymond E. Lovett, LICSW	Not SVHC
Vermont	Bennington		Glenn Cratty, LICSW	Not SVHC
Vermont	Bennington		Lori M. Vadakin, LADC	Not SVHC
Vermont	Bennington	Visiting Nurses & Hospice Care	VNA and Hospice of the Southwest Region	Not SVHC
Vermont	Bennington		BAYADA Home Health Care	Not SVHC
Vermont	Bennington	Long term Care & Subacute Care	Centers for Living and Rehabilitation of SVHC	SVHC
Vermont	Bennington		Bennington Health & Rehab Center	Not SVHC
Vermont	Bennington		Vermont Veterans Home	Not SVHC

Care Resources in Region				
State	County	Type	Institution Name	Affiliate of SVHC
Vermont	Bennington		Crescent Manor Care Center	Not SVHC
Vermont	Bennington	Physical Therapy & Rehabilitation	SVHC Physical Therapy	SVHC
Vermont	Bennington		Bennington Physical Therapy	Not SVHC
Vermont	Bennington		Prospect Rehabilitation	Not SVHC
Vermont	Bennington		Progressive Physical Therapy, LLC; Jennifer J. Smith, PT	Not SVHC
Vermont	Bennington		Manchester Health Services	Not SVHC
Vermont	Bennington		Metzger & Mole Physical	Not SVHC
Vermont	Bennington		Gail O'Brien PT PLLC	Not SVHC
Vermont	Bennington		Robin C. Waterman, PT	Not SVHC
Vermont	Bennington		John M. Diblasio, MPT	Not SVHC
Vermont	Bennington		Terriann Whitman, PT	Not SVHC
Vermont	Bennington		Patricia M. Patane, ATC	Not SVHC
Vermont	Bennington		Frances C. Oneill, PT	Not SVHC
Vermont	Bennington		Casting for Recovery	Not SVHC
Vermont	Bennington		Allison C. Matunas, PT	Not SVHC
Vermont	Windham	Hospital / Medical Center	Brattleboro Memorial Hospital	Not SVHC
Vermont	Windham	Hospital / Medical Center	Grace Cottage Hospital	Not SVHC
Vermont	Windham	Primary Care Physician Practice	SVHC Deerfield Valley Campus	SVHC
Vermont	Windham		SVHC Mountain Medical at Mt. Snow	SVHC
Vermont	Windham		Windham Family Practice	Not SVHC
Vermont	Windham		Brattleboro Primary Care	Not SVHC
Vermont	Windham		Rockingham Medical Group (Springfield Medical Care Systems, Inc.)	Not SVHC
Vermont	Windham		Janine Foote, DO	Not SVHC
Vermont	Windham		Laura Metsch, MD - Brattleboro Memorial Hospital	Not SVHC
Vermont	Windham	Specialty Care Practice	Rockingham Medical Group (Springfield Medical Care Systems, Inc.)	Not SVHC
Vermont	Windham		Brett Bloomberg, AC	Not SVHC
Vermont	Windham		Rockingham Natural Health Clinic	Not SVHC
Vermont	Windham	Dentistry, Orthodontics, Oral Care	1st Advantage Dental	Not SVHC
Vermont	Windham		Estey Dental Center	Not SVHC
Vermont	Windham		Greater Falls Family Cosmetic	Not SVHC
Vermont	Windham		Horizon Dental Associates	Not SVHC
Vermont	Windham		Brattleboro Dental Health	Not SVHC
Vermont	Windham		Rockingham Dental Center	Not SVHC
Vermont	Windham		Connecticut Valley Oral Surgery	Not SVHC
Vermont	Windham		Brattleboro Orthodontics Specialists	Not SVHC
Vermont	Windham		TL Kauffman, DDS	Not SVHC
Vermont	Windham		Jeremy S. Hoffman, DDS	Not SVHC
Vermont	Windham		Family Dentistry: Suzanne West, DDS	Not SVHC
Vermont	Windham		Jeffrey W. Munson, DDS	Not SVHC
Vermont	Windham		Frank Iluzzi, DDS	Not SVHC
Vermont	Windham		Robert S Ruhl, DMD PC	Not SVHC
Vermont	Windham		West River Family Dental: Jeffrey W. Wallace, DDS	Not SVHC
Vermont	Windham		David M. Heydenreich, DDS	Not SVHC
Vermont	Windham		Dr. Ralph N. Buck, DMD	Not SVHC
Vermont	Windham		Dr. Enrico M. Grippo, DDS	Not SVHC
Vermont	Windham	Behavioral Health Services	Health Care and Rehabilitation Services of Southeastern Vermont	Not SVHC
Vermont	Windham		The Brattleboro Retreat	Not SVHC
Vermont	Windham		Matrix Health Care Systems	Not SVHC
Vermont	Windham		Newfane Wellness	Not SVHC
Vermont	Windham		Mary E. King, MSW	Not SVHC
Vermont	Windham		Maryann K. Parrott, LMHC	Not SVHC
Vermont	Windham		Salam Psychiatric Services	Not SVHC
Vermont	Windham		Deborah Lowery, MA	Not SVHC
Vermont	Windham		Loren S. Cole, LICSW	Not SVHC
Vermont	Windham		David F. Livingston, MA, LMFT	Not SVHC
Vermont	Windham		Reflections Counseling, Susan Kinnersley LICSW	Not SVHC
Vermont	Windham		The Phoenix House Programs	Not SVHC
Vermont	Windham		Marc Laurens Licsw: Timothy N Rowland MD	Not SVHC
Vermont	Windham		Harvey Liss, Psychologist	Not SVHC
Vermont	Windham		Brattleboro Pastoral Counseling Center	Not SVHC
Vermont	Windham		Mr. Christopher M Wesolowski, MSW, LICSW, LADC	Not SVHC
Vermont	Windham		Refilling Your Well Counseling	Not SVHC
Vermont	Windham		Michael Jaro, Counselor	Not SVHC
Vermont	Windham		Helen Schepartz, LICSW	Not SVHC
Vermont	Windham		Kirsten A. Beske, LCMHC, MA, JD	Not SVHC
Vermont	Windham		Maggie Comparetta, LMFT	Not SVHC
Vermont	Windham		Dave Cohen, MA, NCC	Not SVHC
Vermont	Windham		Elan Moses, Counselor	Not SVHC
Vermont	Windham		Jill Neitlich, MSW, LICSW	Not SVHC
Vermont	Windham		Valerie Racine, MEd, MS, LCMHC	Not SVHC
Vermont	Windham		Jennifir Bailes Hart, MA, LCMHC	Not SVHC
Vermont	Windham		Gail Peach, LCMHC, RNBC, NCC,	Not SVHC
Vermont	Windham		Jon Schottland, Counselor, MA	Not SVHC
Vermont	Windham		Rachel Zamore, MA, LMFT	Not SVHC
Vermont	Windham		Marybeth Caseiro, MS, LCMHC	Not SVHC
Vermont	Windham		Sydney Crystal, MSW, LICSW	Not SVHC
Vermont	Windham		Eva M. Shelby, MSW, LICSW	Not SVHC
Vermont	Windham		Joyce Sullivan, MA, LADC	Not SVHC
Vermont	Windham		Nora Riley, LICSW	Not SVHC
Vermont	Windham		Robert Spottswood, MA, LCMHC	Not SVHC
Vermont	Windham		Karen Kamenetzky, MA	Not SVHC
Vermont	Windham		Ted Walls, MA, LCMHC	Not SVHC
Vermont	Windham		Flynn Johnson, MA, LCMHC	Not SVHC
Vermont	Windham		Jean Pollock, MHC, NCC	Not SVHC
Vermont	Windham		Laura Hoskins, MA, LCMHC, NCC	Not SVHC
Vermont	Windham		Rockingham Medical Group (Springfield Medical Care Systems, Inc.)	Not SVHC
Vermont	Windham	Visiting Nurses & Hospice Care	Brattleboro Area Hospice	Not SVHC
Vermont	Windham		BAYADA Home Health Care	Not SVHC
Vermont	Windham	Long term Care & Subacute Care	McGirr Nursing Home	Not SVHC
Vermont	Windham		Pine Heights at Brattleboro Center for Nursing and Rehabilitation	Not SVHC
Vermont	Windham		Thompson Nursing Home	Not SVHC
Vermont	Windham		Vernon Green Nursing Home	Not SVHC
Vermont	Windham	Physical Therapy & Rehabilitation	Grace Cottage Rehabilitation	Not SVHC

Care Resources in Region				
State	County	Type	Institution Name	Affiliate of SVHC
Vermont	Windham		Maple Valley Physical Therapy	Not SVHC
Vermont	Windham		Rockingham Medical Group	Not SVHC
Vermont	Windham		Deborah S. Feiner, RPT	Not SVHC
Vermont	Windham		Geoffrey R. Illingworth, PT	Not SVHC
Vermont	Windham		Karen C. Wallace, MPT	Not SVHC
Vermont	Windham		Valarie Mcgettigan, PT	Not SVHC
Vermont	Windham		Priscilla Svec, RPT	Not SVHC
Vermont	Windham		Angelique Priscilla, PT	Not SVHC
Vermont	Windham		Catherine Audette, PT	Not SVHC
Vermont	Windham		Douglas R. Mccorkle, PT	Not SVHC
Vermont	Windham		New England Wellness Works: Alice Kenney, PT	Not SVHC
Vermont	Windham		George T. Connell, PT	Not SVHC
Vermont	Windham		Deborah S. Feiner, RPT	Not SVHC
Vermont	Windham		Monica C. Mattocks, PTAmore info	Not SVHC
Vermont	Windham		Physical Therapy Services: Michael D. Kindopp	Not SVHC
Vermont	Windham		Denise E. Stevens, PT	Not SVHC
Vermont	Rutland, Southern	Hospital / Medical Center	Rutland Regional Medical Center	Not SVHC
Vermont	Rutland, Southern	Primary Care Physician Practice	Mettowee Valley Family Health: Carl E Beckler MD	Not SVHC
Vermont	Rutland, Southern	Specialty Care Practice	Thrive Center-The Green Mountains: Donohue Joseph DC	Not SVHC
Vermont	Rutland, Southern		Vermont Orthopaedic Clinic	Not SVHC
Vermont	Rutland, Southern	Dentistry, Orthodontics, Oral Care	Baasch Dental; David A. Baasch, DDS	Not SVHC
Vermont	Rutland, Southern		Michel Frederick, DDS	Not SVHC
Vermont	Rutland, Southern	Behavioral Health Services	Maple Leaf Clinic	Not SVHC
Vermont	Rutland, Southern		Craig Knapp, PhD	Not SVHC
Vermont	Rutland, Southern		SD Associates	Not SVHC
Vermont	Rutland, Southern	Visiting Nurses & Hospice Care	The Rutland Area Visiting Nurse Association & Hospice	Not SVHC
Vermont	Rutland, Southern	Physical Therapy & Rehabilitation	Source Physical Therapy	Not SVHC
Vermont	Rutland, Southern		Amy Peacock, PT	Not SVHC
Vermont	Rutland, Southern		Deanne S. Moyer, LPTA	Not SVHC
New York	Rensselaer	Hospital / Medical Center	St. Mary's Hospital	Not SVHC
New York	Rensselaer		Samaritan Hospital	Not SVHC
New York	Rensselaer		The Burdett Care Center	Not SVHC
New York	Rensselaer	Primary Care Physician Practice	Twin Rivers Medical Center	SVHC
New York	Rensselaer		Schaghticoke Family Health Center	Not SVHC
New York	Rensselaer		Schodack Internal Medicine and Pediatrics	Not SVHC
New York	Rensselaer		Capital Healthcare Associates (CHA)	Not SVHC
New York	Rensselaer		Partners in Family Medicine Troy	Not SVHC
New York	Rensselaer		Partners in Family Medicine Cropseyville	Not SVHC
New York	Rensselaer	Specialty Care Practice	Arthritis Care PC: Huyck Christopher MD	Not SVHC
New York	Rensselaer		OB/GYN Health Center Associates - Rensselaer	Not SVHC
New York	Rensselaer		Seton Health Pediatrics	Not SVHC
New York	Rensselaer		Millennium Medical Imaging: Haber Harold MD	Not SVHC
New York	Rensselaer		Capital District Podiatry	Not SVHC
New York	Rensselaer		South Troy Health and OnCall Center	Not SVHC
New York	Rensselaer		Seton Health OB-GYN	Not SVHC
New York	Rensselaer		East Greenbush Urgent Care	Not SVHC
New York	Rensselaer		Community Care Physicians, PC	Not SVHC
New York	Rensselaer		VA Clinic Care	Not SVHC
New York	Rensselaer		ImageCare Schodack	Not SVHC
New York	Rensselaer		Schodack Internal Medicine and Pediatrics	Not SVHC
New York	Rensselaer		Urgent Care Center of Schodack	Not SVHC
New York	Rensselaer		Urological Institute of Northeastern New York - Schodack	Not SVHC
New York	Rensselaer		Samaritan Hospital Medical Imaging	Not SVHC
New York	Rensselaer		Capital Healthcare Associates (CHA)	Not SVHC
New York	Rensselaer		Accent Health Care Services Inc.	Not SVHC
New York	Rensselaer		Adept Health Care Services, Inc.	Not SVHC
New York	Rensselaer		PCCS Sleep Disorders Center	Not SVHC
New York	Rensselaer	Dentistry, Orthodontics, Oral Care	Paul S. Bobinski, DDS	Not SVHC
New York	Rensselaer		Laura Zembroski, DDS	Not SVHC
New York	Rensselaer		Phillip Gross, DDS	Not SVHC
New York	Rensselaer		Comfort Dental	Not SVHC
New York	Rensselaer		Dr. Joseph M. Braun, DDS	Not SVHC
New York	Rensselaer		James T. Slade	Not SVHC
New York	Rensselaer		Dr. Steven H. Calderon, DMD	Not SVHC
New York	Rensselaer		Douglas Tucker, DDS	Not SVHC
New York	Rensselaer		Jeremy Messier, DDS	Not SVHC
New York	Rensselaer		Corsetti & Meisel Dental Partnership	Not SVHC
New York	Rensselaer		Pamela Wilson, DDS	Not SVHC
New York	Rensselaer		Joseph R. Lapinski, DDS	Not SVHC
New York	Rensselaer		Phyllis Norton, DDS	Not SVHC
New York	Rensselaer		Natalia M. Bausback, DDS	Not SVHC
New York	Rensselaer		Hudson Valley Dental Care	Not SVHC
New York	Rensselaer		Dr. Christopher H. Reilly, DDS	Not SVHC
New York	Rensselaer		Alexander J Craig DDS	Not SVHC
New York	Rensselaer		Family Dental Care	Not SVHC
New York	Rensselaer		Carney Reilly & Gelder	Not SVHC
New York	Rensselaer		Dr. Donald S. Macintyre, DDS	Not SVHC
New York	Rensselaer		Capital Region Braces	Not SVHC
New York	Rensselaer		Pondview Family Dental Services PC	Not SVHC
New York	Rensselaer		Gary T. Puccio, DDS	Not SVHC
New York	Rensselaer		Aspen Dental - E. Greenbush	Not SVHC
New York	Rensselaer		Greenbush Family Dental	Not SVHC
New York	Rensselaer		Tamarac Valley Med/Dental Center	Not SVHC
New York	Rensselaer		Thomas R. Miller, DDS	Not SVHC
New York	Rensselaer		Judith A Purcell, DDS	Not SVHC
New York	Rensselaer		Brunswick Dental Associates	Not SVHC
New York	Rensselaer		All Access Dental	Not SVHC
New York	Rensselaer		East Hudson Oral Surgery	Not SVHC
New York	Rensselaer		Cooney Orthodontics	Not SVHC
New York	Rensselaer		Dental Services of Troy	Not SVHC
New York	Rensselaer		Capitaland Dental Associates	Not SVHC
New York	Rensselaer		Peter H Collins, DDS	Not SVHC
New York	Rensselaer		Sullivan & Kennedy	Not SVHC

Care Resources in Region				
State	County	Type	Institution Name	Affiliate of SVHC
New York	Rensselaer		Western Dental Care	Not SVHC
New York	Rensselaer		Dr. Robert A. Olsen, DDS	Not SVHC
New York	Rensselaer		Dr. Elizabeth A. Riccio, DDS	Not SVHC
New York	Rensselaer		Affordable Family Dentistry	Not SVHC
New York	Rensselaer		Robert H. Hill II DDS	Not SVHC
New York	Rensselaer		Dr. Mark J. Pettrone, DMD	Not SVHC
New York	Rensselaer		Dr. Donald S. Cox, DDS	Not SVHC
New York	Rensselaer		Justin Alan, DMD	Not SVHC
New York	Rensselaer		Steven Morton, DDS	Not SVHC
New York	Rensselaer		Valerie Bidwell	Not SVHC
New York	Rensselaer		Michele Rigney	Not SVHC
New York	Rensselaer		Mark Weinberger, DDS	Not SVHC
New York	Rensselaer		Francis Spataro Jr., DDS	Not SVHC
New York	Rensselaer		David Levine, DDS	Not SVHC
New York	Rensselaer		Barry Rosenblat, DDS	Not SVHC
New York	Rensselaer		Praveen Vallabhaneni, DDS	Not SVHC
New York	Rensselaer		Thomas Hoppe, DDS	Not SVHC
New York	Rensselaer		Marvin Kessler, DDS	Not SVHC
New York	Rensselaer		Claudia Schwendeman, DDS	Not SVHC
New York	Rensselaer		James De Bonis, DDS	Not SVHC
New York	Rensselaer		Dr. Shambhuprasad M. Mehta, DDS	Not SVHC
New York	Rensselaer		Matthew Clemente, DDS	Not SVHC
New York	Rensselaer		Jeffrey Adams, DDS	Not SVHC
New York	Rensselaer		Timothy Healey, DDS	Not SVHC
New York	Rensselaer		Gerald Beck, DDS	Not SVHC
New York	Rensselaer		Dr. John E. Crable, DDS	Not SVHC
New York	Rensselaer		Thomas Finken, DDS	Not SVHC
New York	Rensselaer	Behavioral Health Services	Inpatient Psychiatric Unit of a General Hospital - Samaritan Hospital	Not SVHC
New York	Rensselaer		Mental Health Empowerment Project, Inc.	Not SVHC
New York	Rensselaer		Samaritan Hospital Outpatient Mental Health Clinic	Not SVHC
New York	Rensselaer		Rensselaer City Center Clinic	Not SVHC
New York	Rensselaer		Samaritan Hospital Psychiatric Inpatient Unit	Not SVHC
New York	Rensselaer		Continuing Day Treatment Services- Samaritan Hospital	Not SVHC
New York	Rensselaer		Unity House of Troy, Inc.	Not SVHC
New York	Rensselaer		Joseph's House and Shelter, Inc.	Not SVHC
New York	Rensselaer		Rensselaer County Dept of Mental Health Case Management	Not SVHC
New York	Rensselaer		St. Anne Institute	Not SVHC
New York	Rensselaer		The Workshop, Inc. d/b/a Northeast Career Plan.	Not SVHC
New York	Rensselaer		Family Support Services	Not SVHC
New York	Rensselaer		St. Catherine's Center, FSS-Children & Family	Not SVHC
New York	Rensselaer		Vanderheyden Hall, Inc.	Not SVHC
New York	Rensselaer		Rensselaer County Dept. of Youth-Innovative Rehab	Not SVHC
New York	Rensselaer		Malone Anthony F MD	Not SVHC
New York	Rensselaer		Bello Scott C MD	Not SVHC
New York	Rensselaer		Behavioral Health Outpatient Services	Not SVHC
New York	Rensselaer		PCCS Sleep Disorders Center	Not SVHC
New York	Rensselaer		Rensselaer County Mental Health	Not SVHC
New York	Rensselaer		My Continuing Treatment	Not SVHC
New York	Rensselaer		Van Dyne Willis T PhD	Not SVHC
New York	Rensselaer		Malone Anthony F MD	Not SVHC
New York	Rensselaer		Fernandez Patricia M MD	Not SVHC
New York	Rensselaer		Dr. Alex G Marsal	Not SVHC
New York	Rensselaer	Visiting Nurses & Hospice Care	Eddy Visiting Nurse Association (Troy)	Not SVHC
New York	Rensselaer		VNA of Albany VNA of Saratoga VNA of Rensselaer (Albany)	Not SVHC
New York	Rensselaer		The Community Hospice Inc (Rensselaer)	Not SVHC
New York	Rensselaer		Accu Care Home Health Services, Inc.	Not SVHC
New York	Rensselaer		Danforth Home Care Services Agency	Not SVHC
New York	Rensselaer		Danforth Limited Licensed Home Care	Not SVHC
New York	Rensselaer	Long term Care & Subacute Care	The Center for Nursing and Rehabilitation at Hoosick Falls	SVHC
New York	Rensselaer		The Springs Nursing and Rehabilitation Centre	Not SVHC
New York	Rensselaer		Van Rensselaer Manor	Not SVHC
New York	Rensselaer		Diamond Hill Nursing and Rehabilitation Center	Not SVHC
New York	Rensselaer		Eddy Heritage House Nursing and Rehabilitation Center	Not SVHC
New York	Rensselaer		Evergreen Commons	Not SVHC
New York	Rensselaer		James A Eddy Memorial Geriatric Center	Not SVHC
New York	Rensselaer		Riverside Center for Rehabilitation and Nursing	Not SVHC
New York	Rensselaer		Rosewood Rehabilitation and Nursing Center	Not SVHC
New York	Rensselaer	Physical Therapy & Rehabilitation	Maccio Physical Therapy	Not SVHC
New York	Rensselaer		Columbia Physical Therapy	Not SVHC
New York	Rensselaer		Riverfront Physical Therapy	Not SVHC
New York	Rensselaer		Brunswick Physical Therapy	Not SVHC
New York	Rensselaer		William P. Jarosz, PT	Not SVHC
New York	Rensselaer		Physical Therapy-Hoosick Falls	Not SVHC
New York	Rensselaer		Browning & Butler Physical Therapy	Not SVHC
New York	Rensselaer		Michelle Gladd, PT	Not SVHC
New York	Rensselaer		Rosewood Gardens	Not SVHC
New York	Rensselaer		Ijunanya Holder, DPT	Not SVHC
New York	Rensselaer		Seton Health Physical Rehab	Not SVHC
New York	Rensselaer		Megan C. Ortolano, PT	Not SVHC
New York	Rensselaer		Lisa M. Brock, MSPT	Not SVHC
New York	Rensselaer		Peter P. Martin, OTR	Not SVHC
New York	Rensselaer		Ciani & Morris Physical Therapy	Not SVHC
New York	Rensselaer		Greenbush Associates	Not SVHC
New York	Rensselaer		Physical Therapy Associates	Not SVHC
New York	Rensselaer		Lori H. Ryan, PT	Not SVHC
New York	Rensselaer		Kathleen C. Wright, PT	Not SVHC
New York	Rensselaer		Northwoods Rehabilitation	Not SVHC
New York	Rensselaer		Dolores F. Montero, PT	Not SVHC
New York	Rensselaer		Diane E. Film, PT	Not SVHC
New York	Rensselaer		Heather L. Brunell, PT	Not SVHC
New York	Rensselaer		Frank Isele, PT	Not SVHC
New York	Rensselaer		Donna Puiatti, PT	Not SVHC
New York	Rensselaer		Brian C. Jutton, PT	Not SVHC

Care Resources in Region				
State	County	Type	Institution Name	Affiliate of SVHC
New York	Washington	Primary Care Physician Practice	Greenwich Primary Care Center	Not SVHC
New York	Washington		Greenwich Family Health Center	Not SVHC
New York	Washington		Convenient Medical Care	Not SVHC
New York	Washington		Salem Family Health Center	Not SVHC
New York	Washington		Hudson Falls Family Medicine	Not SVHC
New York	Washington		Hudson Falls Internal Medicine	Not SVHC
New York	Washington		Adirondack Medical Associates	Not SVHC
New York	Washington		Cambridge Family Health Center	Not SVHC
New York	Washington	Specialty Care Practice	Tri County Eye Care	Not SVHC
New York	Washington		Bay Optical of Greenwich	Not SVHC
New York	Washington		Behavioral Health Services	Not SVHC
New York	Washington		Community Maternity Services	Not SVHC
New York	Washington		Foothills Clinic	Not SVHC
New York	Washington		Fine Family Foot Care: Fine Robert M DPM	Not SVHC
New York	Washington		Adirondack Medical Associates	Not SVHC
New York	Washington		Cambridge Family Health Center	Not SVHC
New York	Washington	Dentistry, Orthodontics, Oral Care	Byre Orthodontics	Not SVHC
New York	Washington		Family Dentistry PC (Granville, NY)	Not SVHC
New York	Washington		Valerio, Dr. Dennis J	Not SVHC
New York	Washington		Pultorak Francis S DDS	Not SVHC
New York	Washington		Dr. Joseph T. Gallagher, DDS	Not SVHC
New York	Washington		Greenwich Family Dentistry	Not SVHC
New York	Washington		Fort Edward Family Dentistry	Not SVHC
New York	Washington		Potvin & Potvin	Not SVHC
New York	Washington		Adirondack Medical Associates	Not SVHC
New York	Washington		John P Lawrence Ddm: Lawrence John P DDS	Not SVHC
New York	Washington		Cohen Mitchell a DDS	Not SVHC
New York	Washington		Long Richard J DDS	Not SVHC
New York	Washington		Redmond Stephen DDS	Not SVHC
New York	Washington		Van Schaick John F DDS	Not SVHC
New York	Washington		Edward Ford Dental Center	Not SVHC
New York	Washington		Dr. Joseph E. Potvin, DDS	Not SVHC
New York	Washington		Mc Cullough Patrick DDS	Not SVHC
New York	Washington		Himes Connie	Not SVHC
New York	Washington		Dr. Mitchell L. Potvin III, DDS	Not SVHC
New York	Washington		Dr. Arnold Small, DDS	Not SVHC
New York	Washington	Behavioral Health Services	Behavioral Health Services (Cambridge, NY)	Not SVHC
New York	Washington		The Community Mental Health Center Outpatient Services	Not SVHC
New York	Washington		Warren-Washington Association for Mental Health	Not SVHC
New York	Washington		WWAMH/Community Living Apartments	Not SVHC
New York	Washington		Caleo Counseling Services	Not SVHC
New York	Washington		Central New York Psychiatric Center	Not SVHC
New York	Washington		Washington County Community Service Administration	Not SVHC
New York	Washington		Great Meadow Behavioral Health Unit	Not SVHC
New York	Washington		Adirondack Samaritan Counseling	Not SVHC
New York	Washington	Visiting Nurses & Hospice Care	Hospice of Washington County	Not SVHC
New York	Washington		Pleasant Valley	Not SVHC
New York	Washington		Fort Hudson Nursing Center, Inc.	Not SVHC
New York	Washington	Long term Care & Subacute Care	Indian River Rehabilitation and Nursing Center	Not SVHC
New York	Washington		Pleasant Valley	Not SVHC
New York	Washington		The Orchard Nursing and Rehabilitation Centre	Not SVHC
New York	Washington	Physical Therapy & Rehabilitation	Donna P Johnson Physical Therapy, PC	Not SVHC
New York	Washington		Kessler Institute For Rehab	Not SVHC
New York	Washington		Orthopedic & Spine Physical Therapy	Not SVHC
New York	Washington		Select Rehabilitation Inc	Not SVHC
New York	Washington		Hillary S. Adams, DPT	Not SVHC
New York	Washington		Salem Family Health Center	Not SVHC
New York	Washington		Eileen K. Dashnaw, OTR	Not SVHC
New York	Washington		Harrison Dean DC	Not SVHC
New York	Washington		Emily J. Zeigler, DPT	Not SVHC
New York	Washington		Donna P Johnson Physical Therapy, PC	Not SVHC
New York	Washington		Brooke L. Morgan, PT	Not SVHC
New York	Washington		Helping Hands Physical Therapy	Not SVHC
New York	Washington		Barbara J. Pratt, PT	Not SVHC
New York	Washington		Carolyn B. Hughes, MSPT	Not SVHC
New York	Washington		Kimberly Sullivan, PT	Not SVHC
New York	Albany, Eastern	Hospital / Medical Center	Albany Medical Center	Not SVHC
New York	Albany, Eastern		Albany Memorial Hospital	Not SVHC
New York	Albany, Eastern		St. Peters Hospital	Not SVHC
New York	Albany, Eastern		Albany Stratton VA Medical Center	Not SVHC
New York	Albany, Eastern	Primary Care Physician Practice	Riverside Family Medical Group (Northeast Health St. Peter's Health Partners)	Not SVHC
New York	Albany, Eastern		Capital District Internal Medicine	Not SVHC
New York	Albany, Eastern		Internal Medicine Associates	Not SVHC
New York	Albany, Eastern		Community Care Physicians Latham Internal Medicine	Not SVHC
New York	Albany, Eastern		Albany Family Medicine - Delmar	Not SVHC
New York	Albany, Eastern		Community Care Physicians Internal Medicine - Delmar	Not SVHC
New York	Albany, Eastern		Whitney M. Young Jr. Health Services	Not SVHC
New York	Albany, Eastern	Specialty Care Practice	Albany Eye Associates: Kassoff Jordan MD	Not SVHC
New York	Albany, Eastern		Capital District Pediatric	Not SVHC
New York	Albany, Eastern		Latham Medical Group	Not SVHC
New York	Albany, Eastern		Community Care Pediatrics - Latham	Not SVHC
New York	Albany, Eastern		Northeast Urological Specialists: Barry A. Shuman, MD	Not SVHC
New York	Albany, Eastern		Williams Center Plastic Surgery Specialists	Not SVHC
New York	Albany, Eastern		Community Care Physicians, PC Urgent Care	Not SVHC
New York	Albany, Eastern		Community Care General Surgery	Not SVHC
New York	Albany, Eastern		Albany Medical Center - Radiology	Not SVHC
New York	Albany, Eastern		Interventional Radiology	Not SVHC
New York	Albany, Eastern		Urological Institute of Northeastern New York	Not SVHC
New York	Albany, Eastern		The Breast Center at ImageCare	Not SVHC
New York	Albany, Eastern		The Prostate Center	Not SVHC
New York	Albany, Eastern		WE CARE Medically-Supervised Weight Loss Program	Not SVHC

Care Resources in Region				
State	County	Type	Institution Name	Affiliate of SVHC
New York	Albany, Eastern		Foot Specialists Associates: Scott Pickett, DPM	Not SVHC
New York	Albany, Eastern		ImageCare Latham	Not SVHC
New York	Albany, Eastern		Diabetes & Nutrition Center	Not SVHC
New York	Albany, Eastern		Community Vein Care	Not SVHC
New York	Albany, Eastern		Audiology Center at Community Care Physicians	Not SVHC
New York	Albany, Eastern		Community Care Dermatology & Medical Aesthetics	Not SVHC
New York	Albany, Eastern		Community Care Podiatry	Not SVHC
New York	Albany, Eastern		Retina & Vitreous Specialists	Not SVHC
New York	Albany, Eastern		OB/GYN Health Center Associates - Delmar	Not SVHC
New York	Albany, Eastern		ImageCare Delmar	Not SVHC
New York	Albany, Eastern		Capital Region Special Surgery	Not SVHC
New York	Albany, Eastern		Northeast Health Diabetes Center	Not SVHC
New York	Albany, Eastern		Whitney M. Young Jr. Health Services	Not SVHC
New York	Albany, Eastern	Dentistry, Orthodontics, Oral Care	Lozman Orthodontics	Not SVHC
New York	Albany, Eastern		Barra Elizabeth DDS	Not SVHC
New York	Albany, Eastern		Dental Society Third District	Not SVHC
New York	Albany, Eastern		Capital District Oral Surgeons	Not SVHC
New York	Albany, Eastern		Capital Region Center-Dental: Marra Frederick J DDS	Not SVHC
New York	Albany, Eastern		Benco Dental Supply Co	Not SVHC
New York	Albany, Eastern		Nancy A. Cavotta, DDS	Not SVHC
New York	Albany, Eastern		Aspen Dental - Latham	Not SVHC
New York	Albany, Eastern		East Hudson Oral Surgery: Dr. Douglas B Smail	Not SVHC
New York	Albany, Eastern		Cooney Orthodontics	Not SVHC
New York	Albany, Eastern		Pathare & Pathare: Pathare Prakesh DDS	Not SVHC
New York	Albany, Eastern		Dr. Debra J. Check, DDS	Not SVHC
New York	Albany, Eastern		Vallecorsa David J DDS	Not SVHC
New York	Albany, Eastern		Mark D Curry DDS	Not SVHC
New York	Albany, Eastern		Family Dentistry & Denture: Bentley Paul P DDS	Not SVHC
New York	Albany, Eastern		Kane Michael J DDS	Not SVHC
New York	Albany, Eastern		Conway Stephen J DDS	Not SVHC
New York	Albany, Eastern		Sundstrom Roseanne DDS	Not SVHC
New York	Albany, Eastern		Batto Catherine	Not SVHC
New York	Albany, Eastern		Toomajian Jr Martin A DDS	Not SVHC
New York	Albany, Eastern		Michael J Maloney, D.D.S., PC	Not SVHC
New York	Albany, Eastern		Hogan William J DDS	Not SVHC
New York	Albany, Eastern		Loudonville Dental Care	Not SVHC
New York	Albany, Eastern		Albany Dental Care: Winter Harvey DDS	Not SVHC
New York	Albany, Eastern		Sabai M DDS	Not SVHC
New York	Albany, Eastern		A.R. Wynnkiw, DDS, PLLC	Not SVHC
New York	Albany, Eastern		Ramsay Rudolph a DDS	Not SVHC
New York	Albany, Eastern		Harff George D DDS	Not SVHC
New York	Albany, Eastern		Capital District Oral & Maxillofacial Surgeons, LLC	Not SVHC
New York	Albany, Eastern		Jenna Fiman, DMD	Not SVHC
New York	Albany, Eastern		Dr. Timothy F. Gary, DDS	Not SVHC
New York	Albany, Eastern		Mottolese & Mottolese: Mottolese Patrick J DDS	Not SVHC
New York	Albany, Eastern		Adirondack Oral Surgery	Not SVHC
New York	Albany, Eastern		Colonie Dental	Not SVHC
New York	Albany, Eastern		Dr. Mijin Kim, DDS	Not SVHC
New York	Albany, Eastern		Hudson Dental PC: Chung Don DDS	Not SVHC
New York	Albany, Eastern		Dr. Abdul H. Khan, DDS	Not SVHC
New York	Albany, Eastern		Albany Upstate Dental	Not SVHC
New York	Albany, Eastern		Levine & Lipnick	Not SVHC
New York	Albany, Eastern		Dr. Ilze I. Eglitis, DDS	Not SVHC
New York	Albany, Eastern		Dr. Daniel P. Digiacomo, DDS	Not SVHC
New York	Albany, Eastern		Alvarez Dental PLLC	Not SVHC
New York	Albany, Eastern		Deitz Robert M DDS	Not SVHC
New York	Albany, Eastern		Bucher John V DDS	Not SVHC
New York	Albany, Eastern		Family & Cosmetic Dentistry	Not SVHC
New York	Albany, Eastern		Dr. Robert Mass, DDS	Not SVHC
New York	Albany, Eastern		Lyons Michael F DDS	Not SVHC
New York	Albany, Eastern		Capital Region Periodontics: Reed Ference DDS	Not SVHC
New York	Albany, Eastern		Esmay Timothy R DDS	Not SVHC
New York	Albany, Eastern		Levine David DDS	Not SVHC
New York	Albany, Eastern		Mahon Family & Dentistry: Brenner Robert	Not SVHC
New York	Albany, Eastern		Barclay & Bresin: Barclay Lee T DDS	Not SVHC
New York	Albany, Eastern		Drs. Decker, Sbuttoni, Boghosian, DiCerbo & Lawless	Not SVHC
New York	Albany, Eastern		Gaetano Gialanella D.D.S. PLLC	Not SVHC
New York	Albany, Eastern		Jones William S DDS	Not SVHC
New York	Albany, Eastern		Kelman & Bergman: Kelman Kenneth DDS	Not SVHC
New York	Albany, Eastern		St. Peter's Dental Center	Not SVHC
New York	Albany, Eastern		Patterson Dental Co	Not SVHC
New York	Albany, Eastern		William Primomo DDS, Robert Herzog DDS	Not SVHC
New York	Albany, Eastern		Delmar Dental Medicine	Not SVHC
New York	Albany, Eastern		Testo Robert a DDS	Not SVHC
New York	Albany, Eastern		Haven Edmond M DDS	Not SVHC
New York	Albany, Eastern		Dr. Howard Tocker, DDS	Not SVHC
New York	Albany, Eastern		Conte Michael DDS	Not SVHC
New York	Albany, Eastern		Fraiman Selwyn a DDS	Not SVHC
New York	Albany, Eastern		Dr. Howard Tocker, DDS	Not SVHC
New York	Albany, Eastern		Marfurt Jeffrey DDS	Not SVHC
New York	Albany, Eastern		Alvarez Dental PLLC	Not SVHC
New York	Albany, Eastern		GHI Family Dental Practice	Not SVHC
New York	Albany, Eastern		Karol & Polsinello: Polsinello Mark J DDS	Not SVHC
New York	Albany, Eastern		Nista Joseph DDS	Not SVHC

Care Resources in Region				
State	County	Type	Institution Name	Affiliate of SVHC
New York	Albany, Eastern		Westgate Smiles Albany	Not SVHC
New York	Albany, Eastern		Mohamed Ghouse Haseena DDS	Not SVHC
New York	Albany, Eastern		Dr. William B. Somerville, DDS	Not SVHC
New York	Albany, Eastern		Percison Periodontics	Not SVHC
New York	Albany, Eastern		Maestro Dentistry - Christopher J. Maestro, D.M.D., F.A.G.D	Not SVHC
New York	Albany, Eastern		Rezey Karen	Not SVHC
New York	Albany, Eastern		Gable Marianne DDS	Not SVHC
New York	Albany, Eastern		Landau Michael a DDS	Not SVHC
New York	Albany, Eastern		Taranto Robert N DDS	Not SVHC
New York	Albany, Eastern	Behavioral Health Services	Albany Behavioral Health Services	Not SVHC
New York	Albany, Eastern		Office of Mental Health: Psychiatric Center	Not SVHC
New York	Albany, Eastern		Vitality Physicians Group Practice PC. Treatment Facility	Not SVHC
New York	Albany, Eastern		Families Together In NYS Inc	Not SVHC
New York	Albany, Eastern		Clearview Center	Not SVHC
New York	Albany, Eastern		Human Resource Associates	Not SVHC
New York	Albany, Eastern		Capital District Psychiatric Center	Not SVHC
New York	Albany, Eastern		Parsons Child and Family Center	Not SVHC
New York	Albany, Eastern		Albany Medical Center Psychiatric Inpatient Unit	Not SVHC
New York	Albany, Eastern		Albany County ACT Program	Not SVHC
New York	Albany, Eastern		Equinox, Inc.	Not SVHC
New York	Albany, Eastern		Capital District Psychiatric Center	Not SVHC
New York	Albany, Eastern		Capital Area Peer Services	Not SVHC
New York	Albany, Eastern		Counseling Care and Services, Inc.	Not SVHC
New York	Albany, Eastern		Homeless and Travelers Aid Society	Not SVHC
New York	Albany, Eastern		Rehabilitation Support Services, Inc.	Not SVHC
New York	Albany, Eastern		Edward J. Hickling, PSYD	Not SVHC
New York	Albany, Eastern		Pinnacle Behavioral Health: Mc Clune Deborah L	Not SVHC
New York	Albany, Eastern		Dr. Deborah L. Kriss, MD	Not SVHC
New York	Albany, Eastern		Residential Opportunities Inc: Nordhauser Micaela MD	Not SVHC
New York	Albany, Eastern		Children's Neuropsychological Services, PLLC	Not SVHC
New York	Albany, Eastern		Northeast Psychological Associates	Not SVHC
New York	Albany, Eastern		Karner Psychological Associates: Mooney W Terrence PHD	Not SVHC
New York	Albany, Eastern		Behavioral Health Specialists: Marrazo Martin J PHD	Not SVHC
New York	Albany, Eastern		Pine Bush Mental Health: Ross Susan A PHD	Not SVHC
New York	Albany, Eastern		Albany County Dept of Mental Health Case Management	Not SVHC
New York	Albany, Eastern	Visiting Nurses & Hospice Care	Hospice & Palliative Care Association	Not SVHC
New York	Albany, Eastern		Visiting Nurse Association-Albany Inc	Not SVHC
New York	Albany, Eastern		St. Peter's Home Care	Not SVHC
New York	Albany, Eastern		Interim Healthcare	Not SVHC
New York	Albany, Eastern		Visiting Nurses Home Care	Not SVHC
New York	Albany, Eastern	Long term Care & Subacute Care	Eddy Village Green	Not SVHC
New York	Albany, Eastern		Albany County Nursing Home	Not SVHC
New York	Albany, Eastern		Bethlehem Commons Care Center	Not SVHC
New York	Albany, Eastern		Eddy Village Green at Beverwyck	Not SVHC
New York	Albany, Eastern		Guiderland Center Rehabilitation and Extended Care Facility	Not SVHC
New York	Albany, Eastern		Hudson Park Rehabilitation and Nursing Center	Not SVHC
New York	Albany, Eastern		Our Lady of Hope Residence-Little Sisters of the Poor	Not SVHC
New York	Albany, Eastern		Our Lady of Mercy Life Center	Not SVHC
New York	Albany, Eastern		St Margarets Center	Not SVHC
New York	Albany, Eastern		St. Peter's Nursing and Rehabilitation Center	Not SVHC
New York	Albany, Eastern		Teresian House Nursing Home Co Inc	Not SVHC
New York	Albany, Eastern	Physical Therapy & Rehabilitation	Community Care Physical Therapy - Latham	Not SVHC
New York	Albany, Eastern		Community Care Physical Therapy - Delmar	Not SVHC
New York	Albany, Eastern		Advanced Physical Therapy Of Albany PC	Not SVHC
New York	Albany, Eastern		RJN Physical Therapy PLLC	Not SVHC
New York	Albany, Eastern		Repsher & Associates Orthopaedic,Physical & Occupational Therapy	Not SVHC
New York	Albany, Eastern		New York Physical Therapy	Not SVHC
New York	Albany, Eastern		Absolute Physical Therapy	Not SVHC
New York	Albany, Eastern		Manual Physical Therapy Associates	Not SVHC
New York	Albany, Eastern		Albany Medical Center : Physical TherapyOutpatient	Not SVHC
New York	Albany, Eastern		Michele L'hommedieu, PT	Not SVHC
New York	Albany, Eastern		Janel L. Carver, DPT	Not SVHC
New York	Albany, Eastern		Terri J. Johnson, PTA	Not SVHC
New York	Albany, Eastern		Kara L. Ennis, PT	Not SVHC
New York	Albany, Eastern		Center For Myofascial Wellness	Not SVHC
New York	Albany, Eastern		Barbara A. Plotzker, PT	Not SVHC
New York	Albany, Eastern		Annette M. Smith, MSPT	Not SVHC
New York	Albany, Eastern		Wayne W. Griffith Jr, AAS	Not SVHC
New York	Albany, Eastern		Capital Region Physical Therapy	Not SVHC
New York	Albany, Eastern		St Peter's Rehabilitation Services	Not SVHC
New York	Albany, Eastern		Leslie A. Leo, OTR	Not SVHC
New York	Albany, Eastern		Brian Reese, PT	Not SVHC
New York	Albany, Eastern		Shannon Leggett, PT	Not SVHC
New York	Albany, Eastern		Kathleen A Hayword, PTA	Not SVHC
New York	Schenectady, Eastern	Hospital / Medical Center	Ellis Hospital	Not SVHC
New York	Schenectady, Eastern		Sunnyview Rehabilitation Hospital	Not SVHC
New York	Schenectady, Eastern	Primary Care Physician Practice	Ellis Primary Care - Nott Street, Schenectady	Not SVHC
New York	Schenectady, Eastern		Community Care Physicians Niskayuna Family Medicine	Not SVHC
New York	Schenectady, Eastern		Capital Care Family Practice: Woodruff Barbara A	Not SVHC
New York	Schenectady, Eastern		Capital Care Family Practice: Lindman Harry MD	Not SVHC
New York	Schenectady, Eastern		Five Corners Family Practice: Tuttle Donna MD	Not SVHC
New York	Schenectady, Eastern		Community Care Physicians Niskayuna Internal Medicine	Not SVHC
New York	Schenectady, Eastern		Ellis Internal Medicine	Not SVHC
New York	Schenectady, Eastern	Specialty Care Practice	Ellis Pediatric Care	Not SVHC
New York	Schenectady, Eastern		ImageCare Niskayuna	Not SVHC

Care Resources in Region				
State	County	Type	Institution Name	Affiliate of SVHC
New York	Schenectady, Eastern		Community Care Physicians Urgent Care Center of Niskayuna	Not SVHC
New York	Schenectady, Eastern		Schenectady Regional Orthopedic Associates	Not SVHC
New York	Schenectady, Eastern		Child Program & Family Resources: Gangemi Marcia A	Not SVHC
New York	Schenectady, Eastern		River Road Internal Medicine Multi-specialty group	Not SVHC
New York	Schenectady, Eastern		Farber Martin S MD	Not SVHC
New York	Schenectady, Eastern		Mohawk Multi Specialty	Not SVHC
New York	Schenectady, Eastern	Dentistry, Orthodontics, Oral Care	Hal Sossner, DMD	Not SVHC
New York	Schenectady, Eastern		Rizzuto & Berls: Rizzuto Bart M DDS	Not SVHC
New York	Schenectady, Eastern		Glover Richard DDS MS	Not SVHC
New York	Schenectady, Eastern		Sandmann Douglas A	Not SVHC
New York	Schenectady, Eastern		Glenville Dental	Not SVHC
New York	Schenectady, Eastern		Szymczak Robert DDS	Not SVHC
New York	Schenectady, Eastern		Nevard Shelly DDS	Not SVHC
New York	Schenectady, Eastern		Dr. Rebecca K. Szymczak Evans, DDS	Not SVHC
New York	Schenectady, Eastern		Scotia-Glenville Dental Center	Not SVHC
New York	Schenectady, Eastern		Robert M. Scotto, DDS PC	Not SVHC
New York	Schenectady, Eastern		Coppola David M DDS	Not SVHC
New York	Schenectady, Eastern		Oyangen Royd Dentist Center	Not SVHC
New York	Schenectady, Eastern		Capital Smiles Dr. Shiloh Lieberman DDS LLC	Not SVHC
New York	Schenectady, Eastern		Peter D. Gold, DDS	Not SVHC
New York	Schenectady, Eastern		Frederick R. Levine, DDS	Not SVHC
New York	Schenectady, Eastern		Rotterdam Dental Arts	Not SVHC
New York	Schenectady, Eastern		Foreman David a DDS	Not SVHC
New York	Schenectady, Eastern		Advanced Aesthetics Dentistry : Oyangen Roy DDS	Not SVHC
New York	Schenectady, Eastern		Aspen Dental - Rotterdam	Not SVHC
New York	Schenectady, Eastern		Noorani Dental: Noorani Aliakbar DDS	Not SVHC
New York	Schenectady, Eastern		Kaplan David DDS	Not SVHC
New York	Schenectady, Eastern		Bettina Pels-Wetzel, D.D.S	Not SVHC
New York	Schenectady, Eastern		Kurkowski George J DDS	Not SVHC
New York	Schenectady, Eastern		Betts David J DDS	Not SVHC
New York	Schenectady, Eastern		Schwartz Family Dentistry: Schwartz Kenneth DDS	Not SVHC
New York	Schenectady, Eastern		Breault & Mc Govern	Not SVHC
New York	Schenectady, Eastern		Union Street Dental	Not SVHC
New York	Schenectady, Eastern		Oral & Maxillofacial Surgery	Not SVHC
New York	Schenectady, Eastern		Avril D'Souza DMD PC	Not SVHC
New York	Schenectady, Eastern		Scotia-Glenville Dental Center: Backer Jeffrey M DDS	Not SVHC
New York	Schenectady, Eastern		Sandmann Douglas A	Not SVHC
New York	Schenectady, Eastern		Vinciguerra Benjamin J DDS	Not SVHC
New York	Schenectady, Eastern		Loffredo Barry DDS	Not SVHC
New York	Schenectady, Eastern		Central Park Dental Group	Not SVHC
New York	Schenectady, Eastern		Braff Michael H DDS	Not SVHC
New York	Schenectady, Eastern		1st Advantage Dental	Not SVHC
New York	Schenectady, Eastern		Dr. Jennifer Wu, DDS	Not SVHC
New York	Schenectady, Eastern		Today's Dental Care	Not SVHC
New York	Schenectady, Eastern		Hoskinson Richard J DDS, Orthodontist	Not SVHC
New York	Schenectady, Eastern		Comis Michael J DDS	Not SVHC
New York	Schenectady, Eastern		Soule Scott S DDS	Not SVHC
New York	Schenectady, Eastern		Union Street Dental: Sementilli Amy M DDS	Not SVHC
New York	Schenectady, Eastern		Dr. Michael K. Deluke, DDS	Not SVHC
New York	Schenectady, Eastern		Central Park Dental Group: Gillenwalters David W DDS	Not SVHC
New York	Schenectady, Eastern		Dental Offices LLP: De Luke Robert K DDS	Not SVHC
New York	Schenectady, Eastern		Pfaffenbach Peter I DDS	Not SVHC
New York	Schenectady, Eastern		Molino Kent B DDS	Not SVHC
New York	Schenectady, Eastern		Dynamic Dental Services	Not SVHC
New York	Schenectady, Eastern		Star Dental	Not SVHC
New York	Schenectady, Eastern		Salvatore Jr Arthur C DDS	Not SVHC
New York	Schenectady, Eastern		Aspen Dental - Niskayuna	Not SVHC
New York	Schenectady, Eastern		Grosso Jeanne J DDS	Not SVHC
New York	Schenectady, Eastern		Rasmussen Paul T DDS	Not SVHC
New York	Schenectady, Eastern		Breault & Mc Govern: Mc Govern Michael DDS	Not SVHC
New York	Schenectady, Eastern		Dr. Thomas J. Merten, DDS	Not SVHC
New York	Schenectady, Eastern		Leitner Jeffrey M DDS	Not SVHC
New York	Schenectady, Eastern		Dr. Ronald E. Barber, DMD	Not SVHC
New York	Schenectady, Eastern		Perrino Michael A DDS	Not SVHC
New York	Schenectady, Eastern		Wilson & Buchakjian: Wilson Jeffrey J DDS	Not SVHC
New York	Schenectady, Eastern		Kraut Stuart M DDS	Not SVHC
New York	Schenectady, Eastern		Every Thomas DDS	Not SVHC
New York	Schenectady, Eastern		Abdullah Sinan DDS	Not SVHC
New York	Schenectady, Eastern		Chauvin James O DDS	Not SVHC
New York	Schenectady, Eastern		Ellis Health Center: Lanka John T DDS	Not SVHC
New York	Schenectady, Eastern		Allen Shawn	Not SVHC
New York	Schenectady, Eastern		DeLuke Orthodontics, PC	Not SVHC
New York	Schenectady, Eastern		Depalma Anthony J DDS	Not SVHC
New York	Schenectady, Eastern		Schummer John C DDS	Not SVHC
New York	Schenectady, Eastern		Dr David A ForemanDMD	Not SVHC
New York	Schenectady, Eastern		Blakeman Randolph F DDS	Not SVHC
New York	Schenectady, Eastern		David A. Stein D.D.S	Not SVHC
New York	Schenectady, Eastern		Dr. Collyer R. Matousek, DMD	Not SVHC
New York	Schenectady, Eastern		Sowalsky Robert D DDS	Not SVHC
New York	Schenectady, Eastern		Dr. Larry Rubin, DDS	Not SVHC
New York	Schenectady, Eastern		First Advantage Dental: Chan Ho K DDS	Not SVHC
New York	Schenectady, Eastern		Pomato Anthony D DDS	Not SVHC
New York	Schenectady, Eastern		Rose Carol	Not SVHC
New York	Schenectady, Eastern		Wall Street Dental: Makhijani Meena N DDS	Not SVHC
New York	Schenectady, Eastern		Cinelli Anthony A DDS	Not SVHC
New York	Schenectady, Eastern		Shah Rajnikant DDS	Not SVHC
New York	Schenectady, Eastern		Down William F DDS	Not SVHC
New York	Schenectady, Eastern		Ferraro Jr Anthony W DDS	Not SVHC
New York	Schenectady, Eastern		Liang Victor DDS	Not SVHC
New York	Schenectady, Eastern		Dr. William T. Tirone, DDS	Not SVHC
New York	Schenectady, Eastern	Behavioral Health Services	Ellis Hospital Department of Psychiatry	Not SVHC
New York	Schenectady, Eastern		Schenectady County Clinic Treatment Program	Not SVHC
New York	Schenectady, Eastern		Mohawk Opportunities ACT Program	Not SVHC

Care Resources in Region				
State	County	Type	Institution Name	Affiliate of SVHC
New York	Schenectady, Eastern		Ellis Child and Adolescent Treatment Services	Not SVHC
New York	Schenectady, Eastern		Northeast Parent & Child Society Clinic	Not SVHC
New York	Schenectady, Eastern		Ellis Mental Health Clinic	Not SVHC
New York	Schenectady, Eastern		Ellis Hospital PROS	Not SVHC
New York	Schenectady, Eastern		Rehabilitation Support Services, Inc. - Schenectady	Not SVHC
New York	Schenectady, Eastern		Family Support	Not SVHC
New York	Schenectady, Eastern		Schenectady County Office of Community Services Suicide Prevention	Not SVHC
New York	Schenectady, Eastern		Schenectady County Dept of Mental Health	Not SVHC
New York	Schenectady, Eastern	Visiting Nurses & Hospice Care	Joan Nicole Prince Home	Not SVHC
New York	Schenectady, Eastern		Community Hospice, Inc.	Not SVHC
New York	Schenectady, Eastern		Visiting Nurse Service of Schenectady and Saratoga	Not SVHC
New York	Schenectady, Eastern	Long term Care & Subacute Care	Baptist Health Nursing and Rehabilitation Center, Inc	Not SVHC
New York	Schenectady, Eastern		Ellis Residential & Rehabilitation Center	Not SVHC
New York	Schenectady, Eastern		Glendale Home-Schdy Cnty Dept Social Services	Not SVHC
New York	Schenectady, Eastern		Kingsway Arms Nursing Center Inc	Not SVHC
New York	Schenectady, Eastern		Pathways Nursing and Rehabilitation Center	Not SVHC
New York	Schenectady, Eastern		The Avenue Nursing and Rehabilitation Centre	Not SVHC
New York	Schenectady, Eastern		The Dutch Manor Nursing and Rehabilitation Centre	Not SVHC
New York	Schenectady, Eastern	Physical Therapy & Rehabilitation	Denise A. Sands, PTA	Not SVHC
New York	Schenectady, Eastern		Fleming Physical Therapy Consultants	Not SVHC
New York	Schenectady, Eastern		Ellis Hospital Physical Therapy	Not SVHC
New York	Schenectady, Eastern		Sandra J Wells PC: Wells Sandra J	Not SVHC
New York	Schenectady, Eastern		Colleen A. Schnitt, PT	Not SVHC
New York	Schenectady, Eastern		Megan Sommo, PT	Not SVHC
New York	Schenectady, Eastern		Capital District Hand Therapy	Not SVHC
New York	Schenectady, Eastern		Physical Therapy Associates	Not SVHC
New York	Schenectady, Eastern		Child Program & Family Resources: Gangemi Marcia A	Not SVHC
New York	Schenectady, Eastern		Capital Living Rehabilitation	Not SVHC
New York	Schenectady, Eastern		Sheila J. Mcglin, PT	Not SVHC
New York	Schenectady, Eastern		Jennifer Oliver, MS	Not SVHC
New York	Schenectady, Eastern		Karyn A. Amico-Dziedzinski, PT	Not SVHC
New York	Schenectady, Eastern		Rose A. Szewdo, PT	Not SVHC
New York	Schenectady, Eastern		Carin E. Cappadocia, PT	Not SVHC
New York	Schenectady, Eastern		Kellie J. Fox, PT	Not SVHC
New York	Warren, Southeastern	Hospital / Medical Center	Glens Falls Hospital	Not SVHC
New York	Warren, Southeastern	Primary Care Physician Practice	Hudson Headwaters Health Network	Not SVHC
New York	Warren, Southeastern		Convenient Medical Care PC	Not SVHC
New York	Warren, Southeastern	Specialty Care Practice	Hudson Headwaters Health Network	Not SVHC
New York	Warren, Southeastern		Adirondack Rehabilitation	Not SVHC
New York	Warren, Southeastern		Glens Falls Obstetrics & Gyn: Guido Michael MD	Not SVHC
New York	Warren, Southeastern		North Country Sleep Disorders	Not SVHC
New York	Warren, Southeastern	Dentistry, Orthodontics, Oral Care	Aspen Dental	Not SVHC
New York	Warren, Southeastern		Pediatrics Dentistry	Not SVHC
New York	Warren, Southeastern		Gental Dental Care: Bohan B. Soifer, DDS	Not SVHC
New York	Warren, Southeastern		Cottrell Dental: Eric K. Cottrell, DDS	Not SVHC
New York	Warren, Southeastern		Dr. Stuart H. Wieder, DDS	Not SVHC
New York	Warren, Southeastern		Adirondack Dental Implant Center	Not SVHC
New York	Warren, Southeastern		Dean M Bartlett PC: Orthodontist	Not SVHC
New York	Warren, Southeastern		Baybrook Dental Group	Not SVHC
New York	Warren, Southeastern		Anthony J. Romanazzi, DDS	Not SVHC
New York	Warren, Southeastern		David J Sherrick PC	Not SVHC
New York	Warren, Southeastern		Huffaker S Kirk DMD, MDS	Not SVHC
New York	Warren, Southeastern		Baim Loren C DDS	Not SVHC
New York	Warren, Southeastern		Dr. John A. Milza Jr, DDS	Not SVHC
New York	Warren, Southeastern		Jay K Wasserman DDS	Not SVHC
New York	Warren, Southeastern		Adolph Valente DDS Dentist Office	Not SVHC
New York	Warren, Southeastern		Kletter & Levine	Not SVHC
New York	Warren, Southeastern	Behavioral Health Services	Behavioral Health Outpatient - Glens Falls Hospital	Not SVHC
New York	Warren, Southeastern		Carol Goodsell Hobbs Lcsw	Not SVHC
New York	Warren, Southeastern		Warren County Mental Health	Not SVHC
New York	Warren, Southeastern		T. Beth Lamb, MN, ARNP, PMHNP-BC Nurse Practitioner Psychiatry	Not SVHC
New York	Warren, Southeastern		Osika & Scarano Psychological: Scarano-Osika Gina PHD	Not SVHC
New York	Warren, Southeastern		Mark Hamdi PhD	Not SVHC
New York	Warren, Southeastern		Glens Falls Hospital Center for Recovery	Not SVHC
New York	Warren, Southeastern		Samantha G. Sweet, PsyD	Not SVHC
New York	Warren, Southeastern		Intensive Case Management Program	Not SVHC
New York	Warren, Southeastern		Frank W. Isele, PhD	Not SVHC
New York	Warren, Southeastern		Sanford Manor Psychology, P.C.	Not SVHC
New York	Warren, Southeastern	Visiting Nurses & Hospice Care	High Peaks Hospice Inc	Not SVHC
New York	Warren, Southeastern		Interim HealthCare	Not SVHC
New York	Warren, Southeastern		House of Grace of The Adirondacks	Not SVHC
New York	Warren, Southeastern		Visiting Nurses Home Care	Not SVHC
New York	Warren, Southeastern	Long term Care & Subacute Care	Adirondack Tri-County Nursing and Rehabilitation Center, Inc	Not SVHC
New York	Warren, Southeastern		The Pines at Glens Falls Center for Nursing & Rehabilitation	Not SVHC
New York	Warren, Southeastern		The Stanton Nursing and Rehabilitation Centre	Not SVHC
New York	Warren, Southeastern		Westmount Health Facility	Not SVHC
New York	Warren, Southeastern	Physical Therapy & Rehabilitation	Orthopedic & Sports Rehab	Not SVHC
New York	Warren, Southeastern		Adam M. Willis, PT	Not SVHC
New York	Warren, Southeastern		Total Care & Rehab Medicine Pc: Michael Parisi DC	Not SVHC
New York	Warren, Southeastern		Cynthia R. Perkins, PTA	Not SVHC
New York	Warren, Southeastern		Lisa M. Cairnduff, PT	Not SVHC
New York	Warren, Southeastern		Linda P Heinzelman Ptpc	Not SVHC
New York	Warren, Southeastern		Orthopedic & Spine Physical	Not SVHC
New York	Warren, Southeastern		Stephen W. Bassin, PT. PC:Physical Therapy & Rehabilitation	Not SVHC
New York	Warren, Southeastern		Adirondack Rehabilitation Medicine	Not SVHC
New York	Warren, Southeastern		Barbara W. Beaulac, PT	Not SVHC
New York	Warren, Southeastern		Weston Paxxon Senior Rehab Services	Not SVHC
New York	Warren, Southeastern		Catherine Reichen, PT	Not SVHC
New York	Warren, Southeastern		Campopiano Physical Therapy	Not SVHC
New York	Warren, Southeastern		Brenden J. Rillahan, PT	Not SVHC
New York	Saratoga, Eastern	Hospital / Medical Center	Saratoga Hospital	Not SVHC
New York	Saratoga, Eastern	Primary Care Physician Practice	Family Medicine of Mechanicville	Not SVHC
New York	Saratoga, Eastern		Stillwater Family Health	Not SVHC

Care Resources in Region				
State	County	Type	Institution Name	Affiliate of SVHC
New York	Saratoga, Eastern		Meliora Family Medicine, PLLC	Not SVHC
New York	Saratoga, Eastern		Dr. Jessica A. Davis, MD	Not SVHC
New York	Saratoga, Eastern		Schuylerville Family Health	Not SVHC
New York	Saratoga, Eastern		Saratoga Care Family Health Centers	Not SVHC
New York	Saratoga, Eastern		Community Care Family Medicine	Not SVHC
New York	Saratoga, Eastern		Clifton Park Family Medicine	Not SVHC
New York	Saratoga, Eastern		Saratoga Medical Associates (SMA)	Not SVHC
New York	Saratoga, Eastern		Burnt Hills Pediatrics and Internal Medicine	Not SVHC
New York	Saratoga, Eastern		Family Practice Ballston Spa	Not SVHC
New York	Saratoga, Eastern	Specialty Care Practice	Saratoga Specialty Center	Not SVHC
New York	Saratoga, Eastern		Community Care Pediatrics - Clifton Park	Not SVHC
New York	Saratoga, Eastern		Community Care Pediatrics - Saratoga & Malta	Not SVHC
New York	Saratoga, Eastern		Saratoga Gynecology Associates	Not SVHC
New York	Saratoga, Eastern		OB/GYN Health Center Associates - Clifton Park	Not SVHC
New York	Saratoga, Eastern		Pediatric Urgent Care	Not SVHC
New York	Saratoga, Eastern		Urological Institute of Northeastern New York	Not SVHC
New York	Saratoga, Eastern		ImageCare Saratoga	Not SVHC
New York	Saratoga, Eastern		Old Saratoga Eyecare	Not SVHC
New York	Saratoga, Eastern		Burnt Hills Pediatrics and Internal Medicine	Not SVHC
New York	Saratoga, Eastern		Malta Foot Specialist: Joyce M. Senick, DPM	Not SVHC
New York	Saratoga, Eastern	Dentistry, Orthodontics, Oral Care	A Beautiful Smile: Popielarski John N DDS	Not SVHC
New York	Saratoga, Eastern		Jamie Green Dental	Not SVHC
New York	Saratoga, Eastern		Smiles for Life Dental Care : Marc A. Johnson DDS	Not SVHC
New York	Saratoga, Eastern		Spa Dental PC	Not SVHC
New York	Saratoga, Eastern		Dr. Thomas J. Pray, DDS	Not SVHC
New York	Saratoga, Eastern		Walton Craig F DDS	Not SVHC
New York	Saratoga, Eastern		Artistic Gentle Dental Care	Not SVHC
New York	Saratoga, Eastern		Rademacher Diane K DDS	Not SVHC
New York	Saratoga, Eastern		Fred Dreher, DDS	Not SVHC
New York	Saratoga, Eastern		Jan P. Fugal DDS	Not SVHC
New York	Saratoga, Eastern		Mehdi Shazia DDS	Not SVHC
New York	Saratoga, Eastern		Saratoga Smiles: Richard L Dennis DMD	Not SVHC
New York	Saratoga, Eastern		Saratoga County Oral & Maxillofacial Surgery Associates	Not SVHC
New York	Saratoga, Eastern		Glenn Park DDS PLLC	Not SVHC
New York	Saratoga, Eastern		Harrison Wayne S DDS	Not SVHC
New York	Saratoga, Eastern		Chauvin Family Dentistry	Not SVHC
New York	Saratoga, Eastern		Dr. Gerald C. Benjamin, D.D.S., P.C.	Not SVHC
New York	Saratoga, Eastern		Adirondack Dental Group PC	Not SVHC
New York	Saratoga, Eastern		1st Advantage Dental	Not SVHC
New York	Saratoga, Eastern		Gregory P. Dodd, DDS	Not SVHC
New York	Saratoga, Eastern		Dr. Christian E. Mathiesen, DMD	Not SVHC
New York	Saratoga, Eastern		Dr. William Y. Perez Jr, DDS	Not SVHC
New York	Saratoga, Eastern		Dr. Troy W. Brooks, DMD	Not SVHC
New York	Saratoga, Eastern	Behavioral Health Services	Bick Wanck & Associates	Not SVHC
New York	Saratoga, Eastern		Transitional Service Association Inc	Not SVHC
New York	Saratoga, Eastern		Psychological Services Pc	Not SVHC
New York	Saratoga, Eastern		Saratoga Center For Social Therapy	Not SVHC
New York	Saratoga, Eastern		Ecs Psychological Services PC	Not SVHC
New York	Saratoga, Eastern		Saratoga Psychological Associates	Not SVHC
New York	Saratoga, Eastern		New Horizons	Not SVHC
New York	Saratoga, Eastern		Shannon Gould, PsyD	Not SVHC
New York	Saratoga, Eastern		Wayne Michael PhD, L.Ac.	Not SVHC
New York	Saratoga, Eastern		Candice J. Dunn, PsyD	Not SVHC
New York	Saratoga, Eastern		Karen Byers, PsyD	Not SVHC
New York	Saratoga, Eastern		Kimberly Marks, LCSW	Not SVHC
New York	Saratoga, Eastern		Jana Miller, MS	Not SVHC
New York	Saratoga, Eastern	Visiting Nurses & Hospice Care	Community Hospice	Not SVHC
New York	Saratoga, Eastern		Visiting Nurses Association	Not SVHC
New York	Saratoga, Eastern	Long term Care & Subacute Care	Saratoga Care Nursing Home	Not SVHC
New York	Saratoga, Eastern		Saratoga County Maplewood Manor	Not SVHC
New York	Saratoga, Eastern		Schuyler Ridge A Residential Health Care Facility	Not SVHC
New York	Saratoga, Eastern		Wesley Health Care Center Inc	Not SVHC
New York	Saratoga, Eastern	Physical Therapy & Rehabilitation	Community Care Physical Therapy - Clifton Park	Not SVHC
New York	Saratoga, Eastern		Adirondack Rehabilitation Medicine	Not SVHC
New York	Saratoga, Eastern		Saratoga Physical Therapy	Not SVHC
New York	Saratoga, Eastern		Lamarco Physical Therapy PC	Not SVHC
New York	Saratoga, Eastern		Minor Improvements Pt	Not SVHC
New York	Saratoga, Eastern		Seton Health Physical Rehabilitation	Not SVHC
New York	Saratoga, Eastern		Spa Physical Therapy	Not SVHC
New York	Saratoga, Eastern		Clifton Park Physical Therapy	Not SVHC
New York	Saratoga, Eastern		Maryellen Lee, RPT	Not SVHC
New York	Saratoga, Eastern		Rae T. Rudat, PT	Not SVHC
New York	Saratoga, Eastern		Wendy A. Maciariello, DPT	Not SVHC
New York	Saratoga, Eastern		Unlimited Potential	Not SVHC
New York	Saratoga, Eastern		Ann Simpson-Mcdowell, LCAT	Not SVHC
New York	Saratoga, Eastern		Bree A. Pisacane, PT	Not SVHC
Massachusetts	Berkshire, Northern	Hospital / Medical Center	Northern Berkshire Health	Not SVHC
Massachusetts	Berkshire, Northern		Berkshire Medical Center	Not SVHC
Massachusetts	Berkshire, Northern	Primary Care Physician Practice	Williamstown Medical Associates	Not SVHC
Massachusetts	Berkshire, Northern		Northern Berkshire Family Medicine	Not SVHC
Massachusetts	Berkshire, Northern		Dr. Stephen L. Payne, MD	Not SVHC
Massachusetts	Berkshire, Northern		Northern Berkshire Family Prtc: Kober William H MD	Not SVHC
Massachusetts	Berkshire, Northern	Specialty Care Practice	Northern Berkshire Orthopedics	SVHC
Massachusetts	Berkshire, Northern		Dermatology of the Berkshires: Cavalli Victoria R MD	Not SVHC
Massachusetts	Berkshire, Northern		Skin Clinic: Elpern David MD	Not SVHC
Massachusetts	Berkshire, Northern		Northern Berkshire Pediatrics	Not SVHC
Massachusetts	Berkshire, Northern		Northern Berkshire OB/GYN	Not SVHC
Massachusetts	Berkshire, Northern		Northern Berkshire General Surgery	Not SVHC
Massachusetts	Berkshire, Northern		Berkshire Hematology Oncology: Rosenthal Paul E MD	Not SVHC
Massachusetts	Berkshire, Northern		Northern Berkshire Wound Healing Center	Not SVHC
Massachusetts	Berkshire, Northern		Northern Berkshire Healthcare Medical Imaging	Not SVHC
Massachusetts	Berkshire, Northern		The Joint Replacement Center of Northern Berkshire	Not SVHC
Massachusetts	Berkshire, Northern		North Adams Regional Hospital Neurology and Stroke Center	Not SVHC

Care Resources in Region				
State	County	Type	Institution Name	Affiliate of SVHC
Massachusetts	Berkshire, Northern	Dentistry, Orthodontics, Oral Care	Dr. George M. Klemm, DDS	Not SVHC
Massachusetts	Berkshire, Northern		Leonard P Radin, DDS	Not SVHC
Massachusetts	Berkshire, Northern		Messenger Digital Dentistry	Not SVHC
Massachusetts	Berkshire, Northern		Ira S. Lapidus, DDS	Not SVHC
Massachusetts	Berkshire, Northern		Oral Surgery Associates LLC	Not SVHC
Massachusetts	Berkshire, Northern		Donald Mead, DDS	Not SVHC
Massachusetts	Berkshire, Northern		John Stewart, DMD Oral Surgery	Not SVHC
Massachusetts	Berkshire, Northern		Ralph V. Blanchard Jr., DDS PC	Not SVHC
Massachusetts	Berkshire, Northern	Behavioral Health Services	Psychiatric Services/Greylock Pavilion	Not SVHC
Massachusetts	Berkshire, Northern		Howland Psychiatry & Associates - Clinical Social Work/Therapist	Not SVHC
Massachusetts	Berkshire, Northern		Thomas R Plunkett - Clinical Social Work/Therapist, MSW, LICSW	Not SVHC
Massachusetts	Berkshire, Northern		Lisa J Carton - Clinical Social Work/Therapist, LICSW	Not SVHC
Massachusetts	Berkshire, Northern		Vitality Physicians Group Practice PC. Treatment Facility	Not SVHC
Massachusetts	Berkshire, Northern		Thelma A Costello - Counselor, MS, LMHC, PC	Not SVHC
Massachusetts	Berkshire, Northern		Counseling Center Northern Berkshire County	Not SVHC
Massachusetts	Berkshire, Northern		Siracusa Associates Behavioral Health	Not SVHC
Massachusetts	Berkshire, Northern	Visiting Nurses & Hospice Care	Visiting Nurse Association & Hospice of Northern Berkshire (VNA & Hospice)	Not SVHC
Massachusetts	Berkshire, Northern		Hospice Services of Western Ma	Not SVHC
Massachusetts	Berkshire, Northern		HospiceCare in the Berkshires	Not SVHC
Massachusetts	Berkshire, Northern	Long term Care & Subacute Care	North Adams Commons Nursing & Rehabilitation Center	Not SVHC
Massachusetts	Berkshire, Northern		Mt. Greylock Extended Care Facility	Not SVHC
Massachusetts	Berkshire, Northern		Hillcrest Commons Nursing & Rehabilitation Center	Not SVHC
Massachusetts	Berkshire, Northern		Sugar Hill Senior Living	Not SVHC
Massachusetts	Berkshire, Northern		Sweet Brook Care Center, Inc.	Not SVHC
Massachusetts	Berkshire, Northern		Williamstown Commons Nursing & Rehabilitation Center	Not SVHC
Massachusetts	Berkshire, Northern		Craneville Place of Dalton	Not SVHC
Massachusetts	Berkshire, Northern	Physical Therapy & Rehabilitation	Robin N. Whitney, PT	Not SVHC
Massachusetts	Berkshire, Northern		Wendy E. Warner, PTA	Not SVHC
Massachusetts	Berkshire, Northern		North Adams Regional Hospital Rehabilitation Services	Not SVHC
Massachusetts	Berkshire, Northern		Adams Physical Therapy, LLC	Not SVHC
Massachusetts	Berkshire, Northern		Williamstown Physical Therapy	Not SVHC
Massachusetts	Berkshire, Northern		Greylock Physical Therapy	Not SVHC
Massachusetts	Berkshire, Northern		Peter L. Hoyt, ATC	Not SVHC
Massachusetts	Berkshire, Northern		Nancy Bullett Physical Therapy	Not SVHC
Massachusetts	Berkshire, Northern		Shelby L. Zawistowski, PTA	Not SVHC

Appendix D. Health Indicators for Service Area

Sources for quantitative health data:

- Behavioral Risk Factor Surveillance Survey (BRFSS)
- Youth Risk Behavioral Survey (YRBS)
- 2010 Census Records
- Community Commons
- County Health Rankings
- State Health Department Reports

Subsequent pages display the performance across a wide array of health indicators.

	Vermont	Bennington County (VT)	Windham County (VT)	New York	Rensselaer County (NY)	Washington County (NY)	Massachusetts	Berkshire County (MA)	Nation
Demographics									
Population % by Age Group									
0-4	4.85%	4.72%	4.53%	5.98%	5.47%	4.96%	5.46%	4.40%	6.29%
5 to 17	14.82%	14.74%	14.74%	15.63%	14.99%	15.06%	15.39%	13.88%	16.99%
18-24	10.64%	9.23%	8.19%	10.09%	11.18%	8.62%	10.40%	9.70%	9.91%
25-34	11.38%	9.32%	10.24%	14.25%	13.08%	11.70%	13.58%	10.24%	13.55%
35-44	11.70%	10.32%	10.86%	12.85%	11.91%	12.86%	12.65%	10.79%	12.84%
45-54	15.07%	15.27%	15.31%	14.33%	14.83%	15.76%	14.86%	15.07%	13.87%
55-64	15.22%	15.72%	17.35%	12.52%	13.86%	14.41%	12.97%	15.73%	12.45%
65+	16.32%	20.68%	18.40%	14.34%	14.67%	16.62%	14.70%	20.18%	14.10%
Social/Economic Factors									
Unemployment Rate	2.90%	3.50%	3.10%	4.50%	3.90%	4.40%	2.80%	3.20%	4.50%
Percent of Population at 100% of Federal Poverty Level (FPL)	11.51%	13.50%	12.83%	15.69%	12.45%	13.48%	11.57%	13.04%	15.47%
Percent of Population at 200% of FPL	29.14%	34.50%	33.26%	32.47%	26.87%	33.46%	24.93%	28.92%	34.26%
Access to Health Services									
Percent of adults with usual primary care provider	87.8%	89.6%	88.0%	83.1%	89.6%	76.3%	88.5%	88.9%	77.9%
Number Primary Care Physicians / 100,000 people	127	107	119	112	58	32	124	133	98
Mental Health -MHP Ratio	257:1	230:1	166:1	420:1	692:1	903:1	203:1	151:1	493:1
Hospitalization (discharge) rate for ambulatory care sensitive conditions/1,000 Medicare enrollees	38.8	56	36.9	47.6	49.4	39.8	52.8	40.5	49.9
Percent of adults without health insurance	5.8%	6.6%	6.2%	10.2%	6.2%	7.4%	3.9%	4.0%	13.2%
Percent of children without health insurance	1.3%	1.5%	1.3%	2.7%	2.2%	2.7%	1.2%	1.4%	5.1%
% Population living in a Food Desert	26.16%	12.73%	16.16%	21.14%	42.31%	14.37%	48.30%	51.12%	57.93%
Unintentional Injury									
Rate of death due to unintentional injury /100,000	45.3	52.1	47.4	26.7	24.9	34.7	31.7	36.8	39.2
Health Behaviors									
Substance Use									
Percent of adults who smoke	16.8%	21.0%	17.1%	16.8%	18.2%	30.9%	15.2%	17.8%	18.1%
% of adults who made quit attempt in past year	59.15%	60.67%	57.44%	65.20%	70.78%	75.98%	60.34%	61.86%	60.02%
% of Adults that had 5 (men) or 4 (women) or more drinks on an occasion in the past 30 days; Binge Drinking Rate	18.00%	16.50%	15.50%	17.70%	18.60%	15.10%	17.60%	18.20%	17.00%
Percent of students who smoked cigarettes in the past 30 days	11.0%	10.0%	11.0%	8.8%	N/A	N/A	7.7%	N/A	10.8%
Quit attempts	42.00%	44.00%	47.00%	45.10%	N/A	N/A	N/A	N/A	45.40%

	Vermont	Bennington County (VT)	Windham County (VT)	New York	Rensselaer County (NY)	Washington County (NY)	Massachusetts	Berkshire County (MA)	Nation
Percent of students who had five or more drinks of alcohol within a couple of hours in the past 30 days (Binge Drinking Rate)	16.0%	15.0%	16.0%	15.6%	N/A	N/A	17.7%	N/A	17.7%
Weight, Physical Activity									
Percent of adults that are overweight or obese	59.4%	59.6%	54.5%	60.7%	65.3%	75.7%	59.9%	59.8%	63.3%
Overweight	35.4%	35.5%	31.5%	36.4%	38.4%	44.2%	36.2%	36.7%	35.8%
Obese	24.0%	24.1%	23.0%	24.3%	26.9%	31.5%	23.7%	23.1%	27.5%
% Adults no leisure time physical activity in past month	17.8%	18.8%	16.3%	23.4%	23.1%	21.7%	19.7%	17.9%	21.8%
Percent of youth that are overweight or obese	26.0%	26.0%	26.0%	27.0%	N/A	N/A	26.3%	N/A	30.3%
Overweight	14.0%	14.0%	14.0%	13.9%	N/A	N/A	15.3%	N/A	16.6%
Obese	12.0%	12.0%	12.0%	13.1%	N/A	N/A	11.0%	N/A	13.7%
Percent of students physically active for 60 minutes, 5+ days a week	39.0%	29.0%	31.0%	41.8%	N/A	N/A	49.2%	N/A	48.6%
Percent of adults who eat 5+ fruit and vegetable servings per day	30.1%	30.2%	31.4%	26.8%	30.9%	N/A	27.5%	27.4%	24.3%
Maternal and Child Health									
Rate of births that occurred in women aged 15-19/1,000 people aged 15-19	17.0	22.0	25.0	21.0	23.0	30.0	16.0	19.0	22.3
Percent of women who smoked before pregnancy	13.5%	N/A	N/A	6.4%	N/A	N/A	8.3%	N/A	N/A
Health Status									
Chronic Diseases									
Percent of adults with Heart Disease	4.0%	4.6%	5.1%	4.3%	12.0%	5.0%	3.9%	4.0%	4.4%
Percent of adults with Asthma	15.4%	21.3%	15.1%	14.3%	9.1%	16.5%	15.4%	16.7%	13.4%
Percent of adults with Diabetes	6.7%	6.9%	6.1%	8.8%	7.9%	9.4%	8.4%	7.8%	9.2%
Percent of adults with 6 or more teeth removed	15.9%	17.9%	17.2%	15.7%	18.2%	28.3%	14.0%	18.7%	15.7%
Mental Health									
Percent of adults that have ever been told they have a depressive disorder	22.00%	22.00%	23.00%	N/A	N/A	N/A	18.70%	N/A	17.00%
Percent of students that felt sad/hopeless almost every day for 2+ weeks in a row	20.00%	23.00%	21.00%	28.60%	N/A	N/A	27%	N/A	29.90%
Maternal and Child Health									
Rate of Infant Mortality =/1,000 births	5.1	8.7	5	5.4	5.2	7.3	4.9	3.7	6.52
Rate of Births that occurred in women aged 15-19/1,000	17%	22%	25%	21%	23%	30%	16%	19%	22.3
Smoking Before Pregnancy	13.50%	N/A	N/A	6%	N/A	N/A	8%	N/A	N/A

	Vermont	Bennington County (VT)	Windham County (VT)	New York	Rensselaer County (NY)	Washington County (NY)	Massachusetts	Berkshire County (MA)	Nation
Quit Smoking During Pregnancy	25.40%	N/A	N/A	28.50%	N/A	N/A	35.50%	N/A	24.2
Breastfeeding Hospital Initiation Rate	91.00%	N/A	N/A	77.80%	66.90%	68.70%	100%	N/A	N/A
% of Women that received Adequate Pre-natal Care	82.00%	84.00%	86.80%	65.90%	70.20%	57.80%	84.90%	75.00%	74.40%
% of Women that received Pre-natal Care in the First Trimester	84.00%	80.00%	84.00%	72.40%	75.50%	61.40%	83.90%	83.10%	83.70%
% Children tested for lead	52.50%	55.20%	45.00%	N/A	N/A	N/A	N/A	N/A	N/A
% Children with at least 2 lead screenings by age 36 mo.	N/A	N/A	N/A	56.40%	48.40%	51.50%	N/A	N/A	N/A
Rate of Children with high blood lead level (10 micrograms or higher per deciliter) Per 1,000 children	N/A	N/A	N/A	23.55	31	14	N/A	N/A	N/A
% Children with elevated Blood Lead Levels (per VT law)	9.40%	13.70%	11.80%	N/A	N/A	N/A	N/A	N/A	N/A
% Adults with 6+ permanent teeth removed	15.90%	17.90%	17.20%	15.70%	18.20%	28.30%	14.00%	18.70%	15.70%
Health Status									
<i>Chronic Diseases</i>									
% of adults with Heart Disease	4.00%	4.62%	5.14%	4.30%	11.99%	5.00%	3.86%	3.97%	4.40%
Heart Disease Morality/100,00	152.4	153	153	188.5	211.2	167.4	142.2	154.6	171.8
Stroke Mortality/100,000	32.8	37.6	38.3	26.9	33.4	33	29.2	30.6	37.3
Cardiovascular Disease (heart/stroke)	8.00%	11.00%	8.00%	7.60%	8.90%	9.10%	5.50%	5.50%	11.70%
% of adults with Asthma	15.44%	21.33%	15.14%	14.32%	9.11%	16.51%	15.42%	16.70%	13.36%
% of adults with Diabetes	6.70%	6.90%	6.10%	8.78%	7.90%	9.40%	8.36%	7.80%	9.19%
Hypertension: Ever Diagnosed	25.00%	27.00%	25.00%	25.70%	27.40%	29.50%	25.00%		29.00%
High Cholesterol: Ever Diagnosed	34.00%	34.00%	40.00%	37.70%	37.00%	40.20%	34.35%	30.63%	33.50%
Arthritis	28.00%	35.00%	30.00%	22.90%	32.80%	28.00%	26.20%	31.90%	26.00%
<i>Cancers</i>									
Incidence of Breast Cancer /100,000	130.1	129.2	121.2	129	130.1	107.9	136.1	119.5	123.5
Incidence of Lung Cancer /100,000	59.7	56.7	53.4	54.2	80.1	70.3	60.5	69.2	52.6
Incidence of Cervical Cancer/100,000	4.6	N/A	N/A	7.7	7	9.4	5.2	N/A	7.5
Incidence of Colon & Rectum Cancer (colorectal)/100,000	33	33.7	45.7	35.7	39.4	40.3	33.7	36.2	34.8
Incidence of Prostate Cancer /100,000	98.4	112.7	79.3	136.8	114.6	102.2	114.2	103.8	114.8
<i>Infectious Diseases</i>									
HIV Prevalence/100,000	82.14	75.61	104.98	784.12	186.43	316.71	328.96	106.68	353.16
Chlamydia Rate/100,000	356.7	234.59	328.34	502.5	389.57	220.31	316.7	77.17	456.08
Preventative Measures									
Routine Doctor Visit in past year	62.50%	N/A	N/A	71.94%	N/A	N/A	75.14%	N/A	67.89%
Dental Care - % of Adults have visited Dentist in past year	74.84%	72.22%	73.44%	72.82%	69.36%	70.17%	79.71%	76.9%*	69.85%

[illegible]

Appendix E. Focus Group Results:

Participant Roster

These members represent the broad interests of the community served by SVHC and included members from state and local public health departments, schools, faith groups, community coalitions and economic development agencies. These members represent all community members including the medically underserved, low-income and minority populations across our region.

Williamstown (March 22, 2018):

1. Kris Maloney, Benefits Coordinator, Williams College
2. Van Ellet, Chair, Williamstown Affordable Housing Committee
3. Jason Hoch, Town Manager, Williamstown
4. Brian O'Grady, Director, Council on Aging
5. Sandra Thomas, Interim Director, Williamstown Chamber of Commerce

Manchester (March 26, 2018):

1. Victoria Silsby, Tobacco Coordinator, The Collaborative
2. Pat DelGiorno, Member, SCUBR
3. Wendy Galbraith, Member, FedUp
4. Jo Lambring, Member, FedUp
5. Geri Gilmore, Member, FedUp
6. Kate Bryan, Senior Director of Development, Battenkill Valley Health Center
7. Andie Fusco, Member, SCUBR

Bennington (April 3, 2018):

1. Mary Botter, Division of Nursing Chair, Southern Vermont College
2. Tim Payne, Principal, Mount Anthony Union Middle School
3. Robin Stromgren, Intake Coordinator, Building Bright Futures
4. Pam Brownell-Gulley, School Nurse, The Village School of North Bennington
5. Jim Sullivan, Director, Bennington County Regional Commission
6. Forest Weyen, Executive Director, Bennington Rescue Squad
7. Dare Meunier, Director, Alliance on Community Transformations
8. Troy Richardson, Real Estate Broker, Maple Leaf Realty

9. Kayla Becker, Director, United Ways of Vermont – Bennington County
10. Alison Tartaglia, Bennington College
11. Randy Anselmo, Director of Health Services, Bennington College

Cambridge (April 10, 2018):

1. Jane Wright, Member, Cambridge United Presbyterian
2. Kathy Roone, Member, Mary McClellan Foundation Board of Directors
3. Bill Figlozzi, Chair, Mary McClellan Foundation Board of Directors
4. Pam Macauley, Community Member
5. Kathleen Lacasse, Member, Mary McClellan Foundation Board of Directors
6. Adrienne Hamilton, EMT, Cambridge Valley Rescue
7. Naomi Marsh, Community Member

Wilmington (March 28, 2018):

1. Claudette Hallenbeck, Community Member
2. Cindy Hayford, Coordinator, Deerfield Valley Community Partnership
3. Crista Gannon, Member, Regional Advisory Board
4. Elizabeth Acquaviva, Member, Regional Advisory Board
5. Charles LaFiura, Member, Regional Advisory Board

Appendix F. Focus Group Results:

Notes from Focus Group Sessions

Manchester Focus Group

March 26, 2018 – 8:00 A.M.

Top Health Needs:

- Workforce and housing
 - Cost of living
- Substance abuse
 - Rehab/detox opportunities and facilities
 - Cigarettes and e-cigarettes and vape use
 - Stigma and awareness
- Lack of activities for youth (without alcohol)
- Lack of transportation
- Mental illness
- Access to food
- Access to insurance
 - Status and costs/subsidies

Priorities:

1. Workforce and cost of living
2. Healthcare and nutrition
3. Lack of transportation

Williamstown Focus Group

March 22, 2018 – 8:00 A.M.

Top Health Needs:

- Access to primary or urgent care
 - Lack of awareness/options
- Transportation
- Transferability between healthcare providers (or collaboration between providers)
- Need for telemedicine
- Substance abuse
 - Need for facilities
 - Geriatric addiction
- Chronic pain management
- Physical health behaviors
- Orthopedics

Priorities:

1. Access to care
2. Health programming
3. Transportation

Bennington Focus Group

April 3, 2015 – 8:00 A.M.

Top Health Needs:**Pre K/ Parents**

- Dental
- Transportation
- Education
 - Pre-natal care
- Access to affordable, quality childcare
- Food insecurity
- Social/emotional development resources
 - Families, children and childcare (building resilience)
- Safe and quality homes
- Substance free family environment
- Peer (parent) support and connections
- Jobs
 - Training
 - Flexible time for work
 - Remote opportunities

Children and Youth (6-12 years old)

- Before and after-school programs
- Mental health
 - Access to support and prevention
- Food Insecurity
- Safe and quality homes
 - Substance abuse, lead free, violence free
- Recreational opportunities
 - For all seasons
 - Bike paths
- Transportation
- Preventative health education
- Dental

Teens (13-20 years old)

- Substance abuse prevention/education
- Nutrition education/habits
- Physical activity education habits
- Physical environment (parks/recreation facilities)
- Career education
 - Encouragement to pursue interests
- Sexual health
 - Consent
- Mental health
 - Stress management
- Recreation
- Violence prevention
- After-school and weekend activities
- Transportation

Adults (21-34 years old)

- Housing stability
- Access to healthcare
- Debt management (student loans)
- Prevention
- Drug and alcohol misuse
 - Tobacco cessation
- Childcare/parent education
- Employment
 - Training
 - Support
- Access to healthy and affordable food
- Pre-natal care
- Finance education (budgeting)
- Engagement of young families by community
- Mental health resources

Mature Adults (35-64 years old)

- Transportation
- Affordable housing
- Employment
- Access to healthy food
- Quality education for children

- Behavioral health
 - Stress management, work-life balance
- Access to primary care
- Fitness opportunities
 - Access to walking/biking trails
- Dental care

Seniors (65+ years old)

- Transportation
 - Medically necessary and non-medically necessary
- Activities/things to do
 - Social and physical
- Mental health/depression/dementia
- Senior resources
- Aging in place resources
- Respite care/caregiver relief
- Access to affordable payment for health care and medications
- Sense of community
- Dental care
- Expansion/additional access to foods (Meals on Wheels)

Cambridge Focus Group

April 10, 2018 – 5:00 P.M.

- Mental health
 - Primarily children and teens
 - Not enough practitioners
 - Stress management
- Prevention
 - Promoting healthy behaviors
 - Resilience / life skills
 - Strong role models needed
- Substance abuse (including alcohol and tobacco)
 - Overprescribing opioids
- Low access to urgent care
 - Too busy, very long wait, not enough providers
- Needs transferability between services and providers
- Elderly
 - Isolated
 - Need health and social programming
- Transportation – none
- Affordable housing

- Access to affordable foods
- Mobile services/telemedicine needed
 - Funding needed for Cambridge Valley Rescue

Priorities:

1. Access to care
2. Mental health
3. Prevention and health promotion

Wilmington Focus Group

March 28, 2018 – 5:00 P.M.

Top Health Needs:

- Substance abuse and addiction
- Lack of exercise and wellness
- Geriatric and rural challenges
 - Lack of services/facilities
 - Need for certified at home healthcare workers
 - Hospice/palliative services
 - “Aging in place”
- Mental health
- Food insecurity (child and senior)
- Poverty
 - Assistance with Medicaid services
- Oral health
- Transportation
- Certified daycare options
- Lack of activities for young adults without alcohol
- Lack of economic opportunities
 - Cost of living versus affordable wages
- Access to affordable care
- No 24/7 care (at home)/live-in
 - Need certified professionals
- Opportunity for certification/education for youth
- Hypertension & obesity

Priorities:

1. Geriatric care
2. Economic opportunities/cost of living
3. Substance abuse

Appendix G. SVHC Internal Review of Findings:

SVHC Board Quality Safety Committee

June 18, 2018 – 12:30 pm

Top of mind health needs identified:

- Mental and behavioral health
- Employment opportunities
- Aging in place and senior care
- Obesity
- Substance abuse
- Access to primary and urgent care
- Smoking and vaping

Nurse Practice Council

June 20, 2018 – 8:30 A.M.

Top of mind health needs identified:

- Mental and behavioral health
- Substance abuse
- Obesity
- Smoking and vaping
- Vaccinations
- Economic development
- Health insurance costs
- Access to primary care and urgent care
- Transportation

Appendix H. Summary CHNA Presentation

Community Health Needs Assessment (CHNA)

Discussion with SVHC Board of Trustees
June 22, 2018

Southwestern
Vermont
HEALTH CARE



Agenda



- Brief introduction to Determinants of Health
- Community Health Needs Assessment (CHNA) Method
- Quantitative Findings
- Qualitative Findings
- Priority Health Needs
- Implementation Plan



Setting The Stage- What determines your health?

Social Determinants of Health

- **Economics:** Employment, income, debt, cost of living
- **Education:** Literacy, vocational training, college degree
- **Community:** Social support systems (relatives, friends, loved ones, religion)
- **Nutrition:** Food security and accessibility
- **Lifestyle:** Exercise, smoking, drug abuse
- **Environment:** Housing, transportation, safety, sidewalks, parks
- **Health Care:** Care access, quality of care, insurance barriers
- **Genetics:** Inheritance and epigenetics

Determinants of health

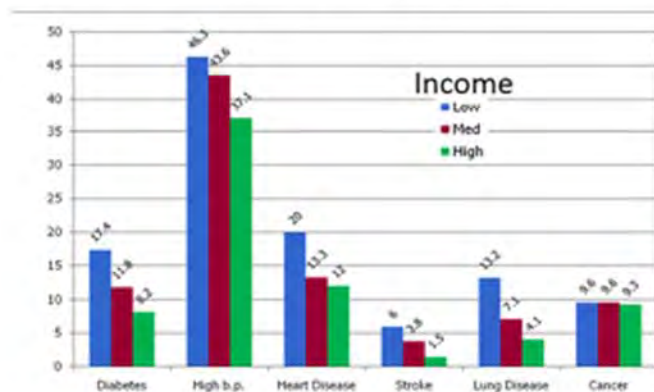


Implementation Plan Rationale



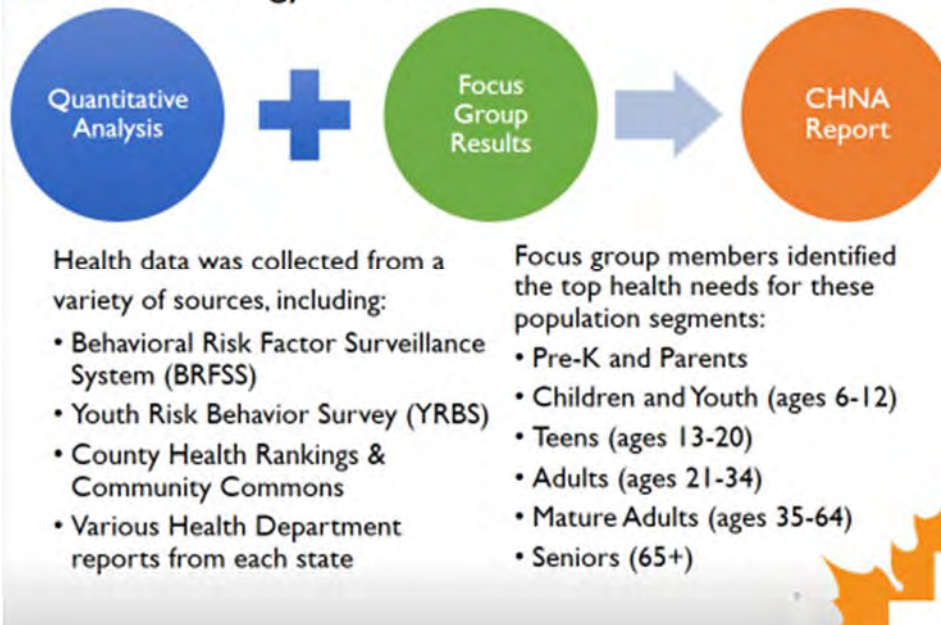
Social Determinants of Health

Income – income is the single strongest predictor of health



Banks et al, JAMA 295, 2037-2045

Methodology of CHNA



Quantitative Health Data- Across SVMC's Service Area

High degree of mental and behavioral health issues

- 1 in 5 adults diagnosed with Depression

Issues with personal care

- 1 in 4 adults are Obese
- 1 in 5 adults smoke Cigarettes
- 1 in 10 adults have no Primary Care Provider

High Poverty and an Aging population

- 1 in 8 adults below the Federal Poverty Line (<\$12,000)
- 50% of residents with government payers (Medicare and Medicaid) versus 35% nationally
- 22% over age 65 compared to 17% across VT and 13% in Chittenden County

Qualitative Data- Focus groups and Survey

- Behavioral health and substance abuse
- Access to primary care and urgent care
- Schools, internships and job training
- Employment opportunities and living wages
- High cost of living (housing, healthcare, etc.)
- Housing and transportation
- Childcare
- Access to healthy food
- Teen vaping and juuling
- Complex interaction of individual behavior choices and structural forces

Priority Health Needs found by CHNA



Access to Care

- Increase primary care and urgent care access
- Improve access to behavioral health services

Obesity and Healthy Activities

- Enhance health and wellness programs
- Foster links between good health, nutrition, exercise, and education and economic development

Behavioral Health and Substance Abuse

- Expand substance abuse prevention and treatment options
- Develop youth stress management and coping programs

Implementation Plan

In 2015 CHNA- access to dental care was a priority and SVMC launched SVMC Dentistry



Access to Care

- Increase primary care and urgent care access
- Improve access to behavioral health services
- Provide Free and Subsidized Care
- Renovate Wilmington Campus
- Support the Bennington Free Clinic
- Expand Urgent Care Access
- Partner with United Counselling Service
- Integrate behavioral health into emergency department and inpatient services
- Reserve a bed at Homeless Shelter
- Community Care Team

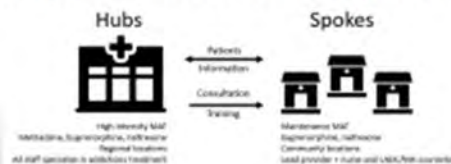


Implementation Plan



Behavioral Health and Substance Abuse

- Expand substance abuse prevention and treatment options
- Develop youth stress management and coping programs
- Enroll more SVMC providers in hub/spoke program
 - Primary Care and OB
 - Centers for Living and Rehabilitation
- Substance abuse treatment collaborative
- Partnership with Turning Point
- Centerpiece of Community Care Team



Implementation Plan



Obesity and Healthy Activities

- Enhance health and wellness programs
- Foster links between good health, nutrition, exercise, and education and economic development

Economics –

- Downtown redevelopment (Putnam Project)
- Healthy Homes Program
- Americorp VISTA fellows
- The Lightning Jar, Bennington's entrepreneurial hub
- Support for CEDS and Southern Vermont Economic Development Zone
- Testify for economic related bills
 - Healthcare workforce
 - Uber/Lyft transportation company
- Business Round Table and Vermont Futures



Implementation Plan



Obesity and Healthy Activities

- Enhance health and wellness programs
- Foster links between good health, nutrition, exercise, and education and economic development

Built Environment –

- Support for walking/biking trails
- Stark Street Playground revitalization
- Borrow a bike program at Catamount Connections
- Community library support

Youth & Education –

- Teen texting program
- Teen-to-teen videos
- Reality fair and Governor's institute
- Elementary school business fair



Implementation Plan



Obesity and Healthy Activities

- Enhance health and wellness programs
- Foster links between good health, nutrition, exercise, and education and economic development

Food Insecurity –

- Healthcare shares
- Meals on wheels voucher
- Community meals
- Leftovers to food pantry
- Student summer meal program
- VT Food Bank drop site
- Food donated to TCN program



Implementation Plan



Obesity and Healthy Activities

- Enhance health and wellness programs
- Foster links between good health, nutrition, exercise, and education and economic development

RiseVT (OneCare primary prevention strategy) –

- Involve schools
- Engage businesses
- Collaborate with towns



Establish healthy living as foundational and the norm



SVMC is operating at many scales to address the priority health needs



Strategy 1 *Traditional Clinical Approaches*

Panel management
Transitional Care Nurses
Universal Risk Screening and Referral

Strategy 2 *Innovative Person-Centric Community Linkages*

Community Care Team
Spoke Program
SASH

Strategy 3 *Community-wide Efforts*

Putnam Development
Lightning Jar
RiseVT

25

Priority Health Needs found by CHNA



Access to Care

- Increase primary care and urgent care access
- Improve access to behavioral health services

Obesity and Healthy Activities

- Enhance health and wellness programs
- Foster links between good health, nutrition, exercise, and education and economic development

Behavioral Health and Substance Abuse

- Expand substance abuse prevention and treatment options
- Develop youth stress management and coping programs

26